



111 S. KING STREET, SUITE 170
 HONOLULU, HI 96813
 808.523.5866
 WWW.G70.DESIGN

REVISIONS		
#	Date	Description
1	09/17/21	ADDENDUM 1

CONSTRUCTION / BID DOCUMENTS
08/16/21

This work was prepared by me or under my supervision and construction of this project will be under my observation

Supervision and Observation of this project is as defined in Section 1.2 of the Hawaii Administrative Rules, Title 16, Chapter 115, Professional Engineers, Architects, Land Surveyors, and Landscape Architects.

License Expiration Date

PROJECT TITLE

HHSC KAUAI

KVMH IMAGING DEPARTMENT RENOVATIONS

FILENAME:
 C:\Users\kendym\Documents\KVMH-CT_A18_Central_kendym.rvt

DRAWING TITLE
ENLARGED FLOOR PLAN

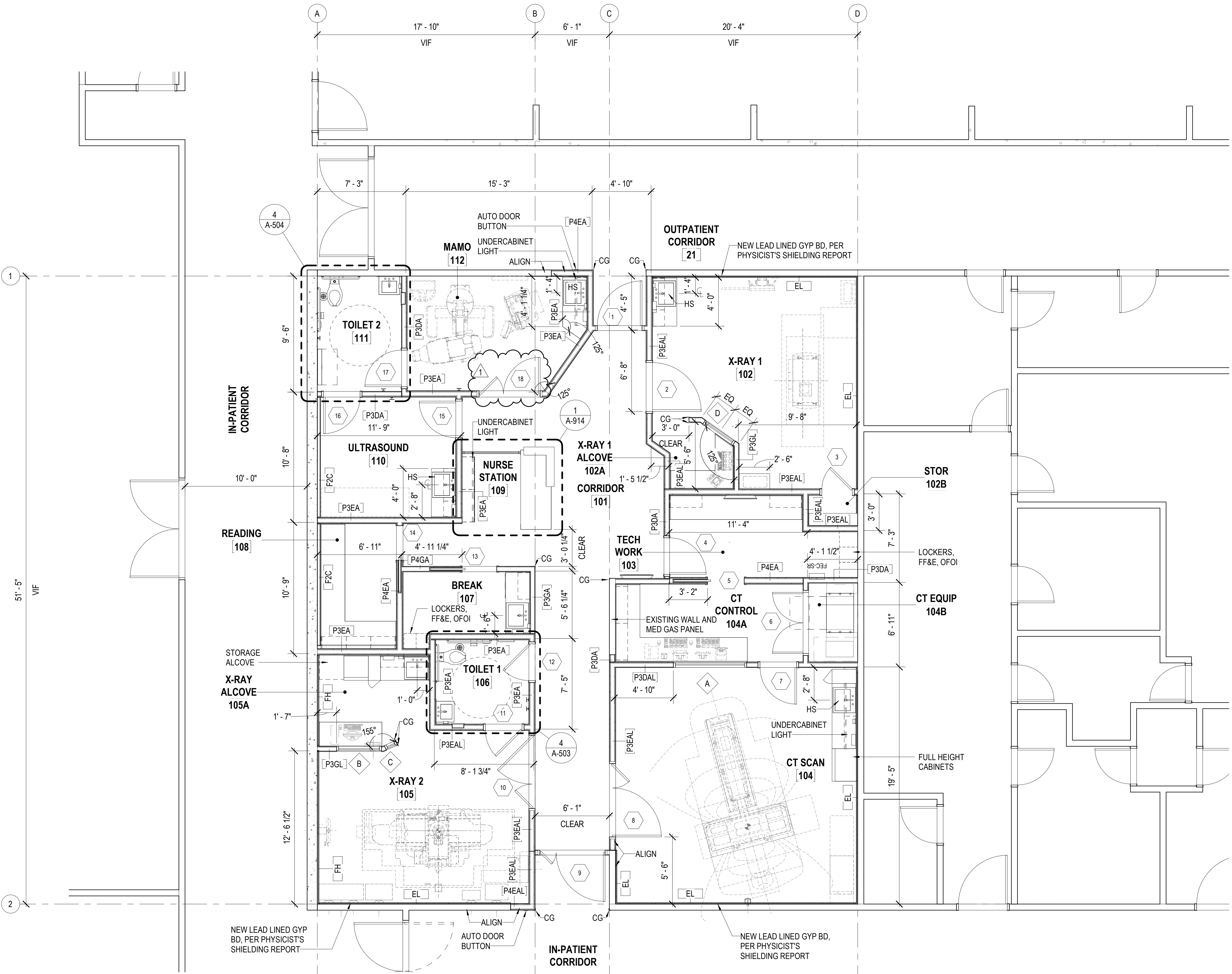
SCALE: 1/4" = 1'-0"

DRAWN BY: Author
 CHECKED BY: Checker

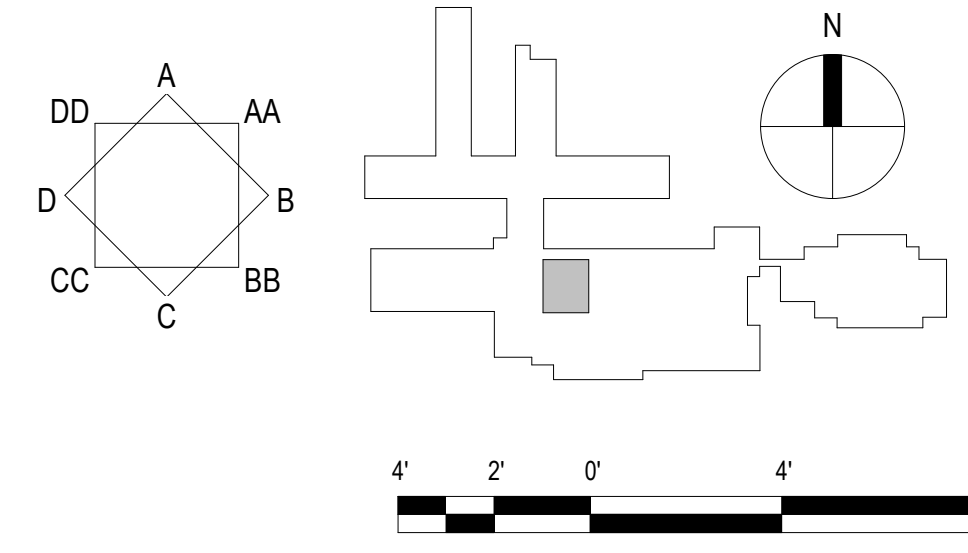
PROJECT NO. 220038-01
 DRAWING NO.

SHEET ISSUE DATE:
 06/18/21

A-121



1 ENLARGED FLOOR PLAN
 SCALE: 1/4" = 1'-0"



Type in Central File Path Here

9/9/2021 3:13:21 PM



111 S. KING STREET, SUITE 170
 HONOLULU, HI 96813
 808.523.5866
 WWW.G70.DESIGN

#	Date	Description
1	09/17/21	ADDENDUM 1

CONSTRUCTION / BID DOCUMENTS
08/16/21

This work was prepared by me or under my supervision and construction of this project will be under my observation

Supervision and Observation of this project is as defined in Section 1.2 of the Hawaii Administrative Rules, Title 16, Chapter 115, Professional Engineers, Architects, Land Surveyors, and Landscape Architects.

License Expiration Date

PROJECT TITLE

HHSC KAUAI

KVMH IMAGING DEPARTMENT RENOVATIONS

FILENAME:
 C:\Users\kendym\Documents\KVMH-CT_A18_Central_kendym.rvt

DRAWING TITLE
ENLARGED REFLECTED CEILING PLAN

SCALE: As indicated

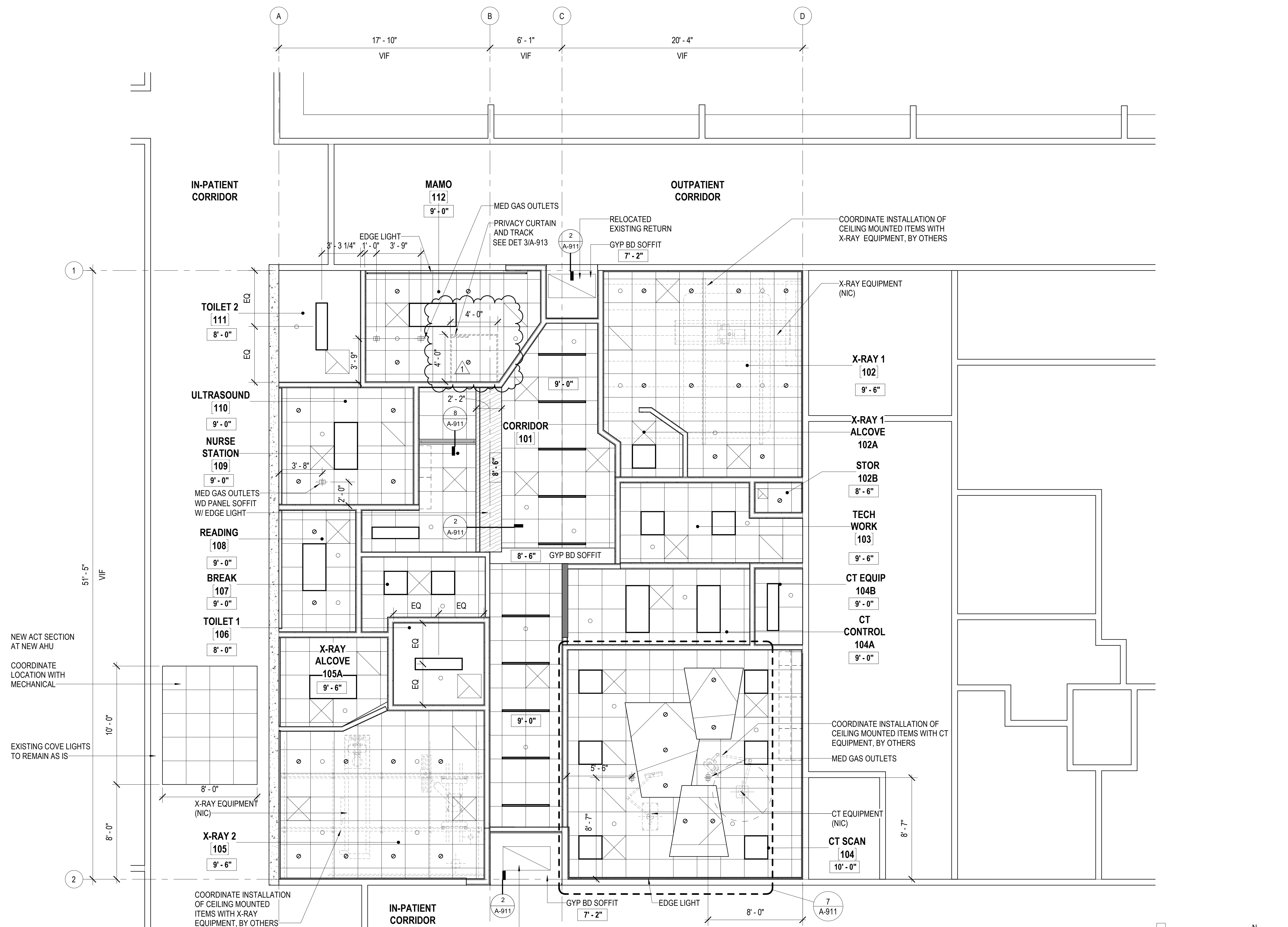
DRAWN BY:
Author

CHECKED BY:
Checker

PROJECT NO.
 220038-01

DRAWING NO.
A-131

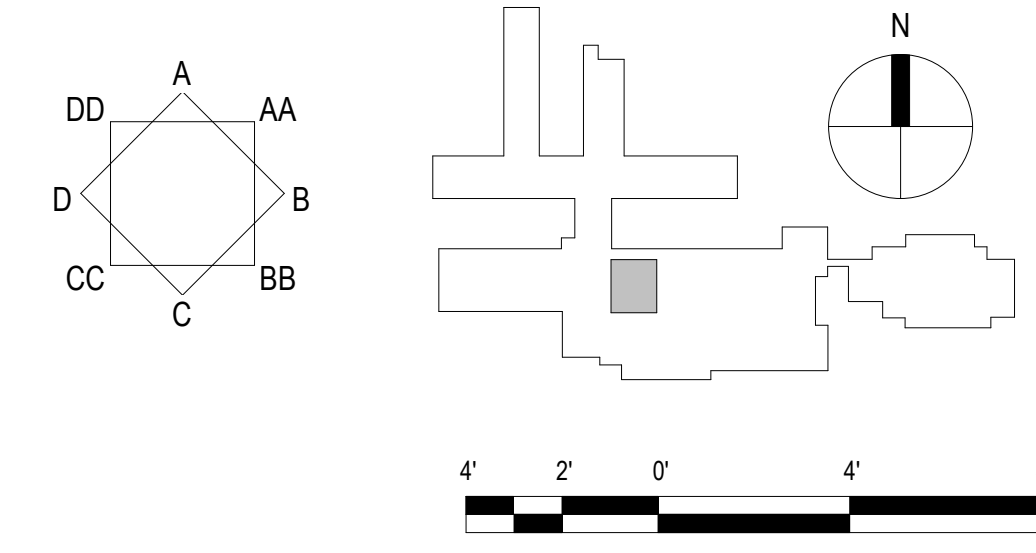
SHEET ISSUE DATE:
 06/18/21



1 ENLARGED REFLECTED CEILING PLAN
 SCALE: 1/4" = 1'-0"

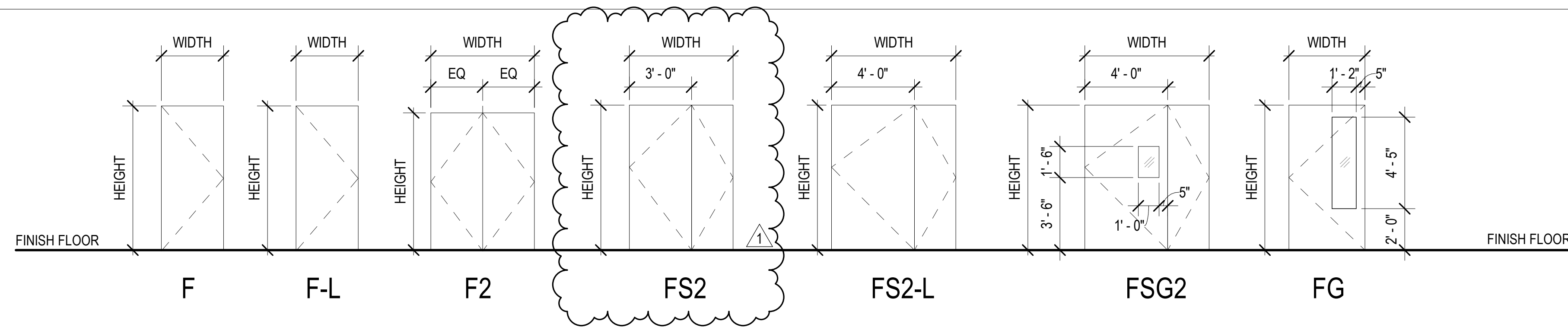
LEGEND

- ACT-1 24" x 24" SUSPENDED ACOUSTICAL TILES
- PTD GYP BD 1 LAYER
- WOOD SOFFIT
- 2 X 4 RECESSED LAY-IN LIGHT FIXTURE
- 2 X 2 RECESSED LAY-IN LIGHT FIXTURE
- 1 X 4 RECESSED FLUORESCENT
- LINEAR RECESSED LIGHT FIXTURE
- EDGE LIGHT
- RECESSED DOWNLIGHT
- SUPPLY DIFFUSER
- RETURN REGISTER
- EXHAUST GRILLE
- FIRE SPRINKLER HEAD



Type in Central File Path Here

DOOR TYPES



DOOR SCHEDULE

DOOR MARK	WIDTH	HEIGHT	DOOR TYPE (1)	THICKNESS	CONSTRUCTION (2)	FINISH	GLASS (4)	LOUVER (5)	RATING (7)	FRAME MATERIAL	HARDWARE GROUP (7)	HEAD (8) U.O.N	JAMB (8) U.O.N.	THRESHOLD (8) U.O.N.	REMARKS
1	3'-8"	7'-0"	FG	1 3/4"	SC	WS	TG			MP	001	1/A-702	1/A-702	3/A-702	AUTOMATIC DOOR OPENER, SMOKE CONTROL
2	4'-0"	7'-0"	F-L	1 3/4"	SC/PB	WS				MP	003	2/A-702	2/A-702	3/A-702	ACOUSTIC
3	2'-6"	7'-0"	F	1 3/4"	SC	WS				MP	004	1/A-702	1/A-702	---	
4	3'-0"	7'-0"	F	1 3/4"	SC	WS				MP	005	1/A-702	1/A-702	3/A-702	ACOUSTIC
5	3'-0"	7'-0"	F	1 3/4"	SC	WS				WP	006	6/A-702	7/-702	8/A-702	
6	5'-0"	6'-8"	F2	1 3/8"	SC	WS				MP	008	1/A-702	1/A-702	---	
7	3'-0"	7'-0"	F-L	1 3/4"	SC/PB	WS				MP	007	2/A-702	2/A-702	---	
8	6'-0"	7'-0"	FS2-L	1 3/4"	SC/PB	WS				MP	009	2/A-702	2/A-702	3/A-702	ACOUSTIC
9	5'-4"	7'-0"	FSG2	1 3/4"	SC	WS	TG			MP	002	1/A-702	1/A-702	3/A-702	AUTOMATIC DOOR OPENER, SMOKE CONTROL
10	6'-0"	7'-0"	FS2-L	1 3/4"	SC/PB	WS				MP	009	2/A-702	2/A-702	3/A-702	ACOUSTIC
11	3'-0"	7'-0"	F-L	1 3/4"	SC/PB	WS				MP	011	2/A-702	2/A-702	4/A-702	
12	3'-0"	7'-0"	F	1 3/4"	SC	WS				MP	010	1/A-702	1/A-702	5/A-702	
13	2'-10"	7'-0"	F	1 3/4"	SC	WS				WP	012	6/A-702	7/-702	8/A-702	
14	2'-10"	7'-0"	F	1 3/4"	SC	WS				WP	013	6/A-702	7/-702	8/A-702	ACOUSTIC
15	3'-0"	7'-0"	F	1 3/4"	SC	WS				MP	014	1/A-702	1/A-702	3/A-702	ACOUSTIC
16	3'-0"	7'-0"	F	1 3/4"	SC	WS				MP	010	1/A-702	1/A-702	4/A-702	
17	3'-0"	7'-0"	F-L	1 3/4"	SC/PB	WS				MP	010	2/A-702	2/A-702	4/A-702	
18	5'-0"	7'-0"	FS2	1 3/4"	SC	WS				MP	015	1/A-702	1/A-702	3/A-702	ACOUSTIC

DOOR NOTES LIST

- DOOR TYPES
 B - BI-FOLD
 BL - BI-FOLD LOUVER
 CD - COUNTER DOOR
 CG - COUNTER GRILLE
 F - FLUSH
 FG - FLUSH GLAZING
 FL - FLUSH LOUVER
 FM - FLUSH WITH MOULDING
 FLO - FLUSH LOCK-OFF
 FS - FLUSH WITH OPERABLE SIDE PANEL
 G - GARAGE
 GL - GLASS
 MG - METAL GATE
 OD - OVERHEAD DOOR
 OG - OVERHEAD GRILLE
 OP - OPERABLE PARTITION
 SFD - SLIDING FOLDING DOOR
 SG - SLIDING GLASS
 SR - STILE RAIL
 SRG - STILE RAIL GLASS
 L - LEAD LINED

NOTE: SUB-TYPES ARE INDICATED BY A NUMERAL

2. DOOR CONSTRUCTION:

- A - ACOUSTICAL
- AL - ALUMINUM
- B - BULLET PROOF
- E - EXISTING
- GL - GLASS
- HC - HOLLOW CORE
- HM - HOLLOW METAL
- M - METAL
- PB - LEAD LINED
- SC - SOLID CORE
- SR - STILE & RAIL
- FRP - FIBERGLASS

3. DOOR FINISH:

- AA - ALUMINUM, ANODIZED
- AP - ALUMINUM, PAINTED
- FF - FACTORY FINISH
- MP - METAL, PAINTED
- WP - WOOD, PAINTED
- WS - WOOD, STAINED
- PL - PLASTIC LAMINATE
- WT - WOOD, TRANSPARENT
- VC - VINYL CLAD

NOTE: SEE COLOR & MATERIAL SCHEDULE FOR COLOR DESIGNATIONS.

4. GLASS TYPES:

ALL GLASS SHALL BE 1/4" THK. U.O.N.

- BR - SECURITY GLASS-BALLISTIC RESISTANT
- DG - DECORATIVE GLASS
- FE - SECURITY GLASS-FORCED ENTRY
- FG - FLOAT GLASS
- FS - FIRE SAFETY GLASS
- FR - FIRE RATED GLASS
- HR - HURRICANE RESISTANT GLASS
- HS - HEAT STRENGTHENED GLASS
- IG - INSULATING GLAZING
- LG - LAMINATED GLASS
- LL - LEAD GLASS
- MG - ONE WAY VISION GLASS
- PG - PATTERNED GLASS
- TG - TEMPERED GLASS
- WG - WIRE GLASS (HORIZONTAL/ VERTICAL WIRE ORIENTATION)
- WPG - WIRE PATTERNED GLASS

5. DOOR LOUVER TYPES:

- AD - ADJUSTABLE
- LP - LIGHTPROOF
- SB - STANDARD BLADE
- SP - SIGHTPROOF
- SR - STORM RESISTANT

DOOR LOUVER CONSTRUCTION & FINISH:

- AA - ALUMINUM, ANODIZED
- AP - ALUMINUM, PAINTED
- WP - WOOD, PAINTED
- WT - WOOD, TRANSPARENT

6. FRAME CONSTRUCTION/CASING & FINISH:

- AA - ALUMINUM, ANODIZED
- AP - ALUMINUM, PAINTED
- MP - METAL, PAINTED
- WP - WOOD, PAINTED
- PL - PLASTIC LAMINATE
- WT - WOOD, TRANSPARENT
- VC - VINYL CLAD

NOTE: SEE COLOR & MATERIAL SCHEDULE FOR COLOR DESIGNATIONS.

7. HARDWARE:

HARDWARE GROUPS BY DOOR HARDWARE SUPPLIER

8. DETAILS:

SEE HEAD/JAMB DETAILS ON SHEET A-____, AND THRESHOLD DETAILS ON SHEET A-____, UNLESS OTHERWISE NOTED.

9. REMARKS LIST



111 S. KING STREET, SUITE 170
 HONOLULU, HI 96813
 808.523.5866
 WWW.G70.DESIGN

REVISIONS

#	Date	Description
1	09/17/21	ADDENDUM 1

CONSTRUCTION / BID DOCUMENTS

08/16/21

This work was prepared by me or under my supervision and construction of this project will be under my observation

Supervision and Observation of this project is as defined in Section 1.2 of the Hawaii Administrative Rules, Title 16, Chapter 115, Professional Engineers, Architects, Land Surveyors, and Landscape Architects.

License Expiration Date

PROJECT TITLE

HHSC KAUAI

KVMH IMAGING DEPARTMENT RENOVATIONS

FILENAME:

C:\Users\kendym\Documents\KVMH-CT_A18_Central_kendym.rvt

DRAWING TITLE

DOOR TYPES, DOOR SCHEDULE & NOTES

SCALE: 1/4" = 1'-0"

DRAWN BY:

Author

CHECKED BY:

Checker

PROJECT NO.

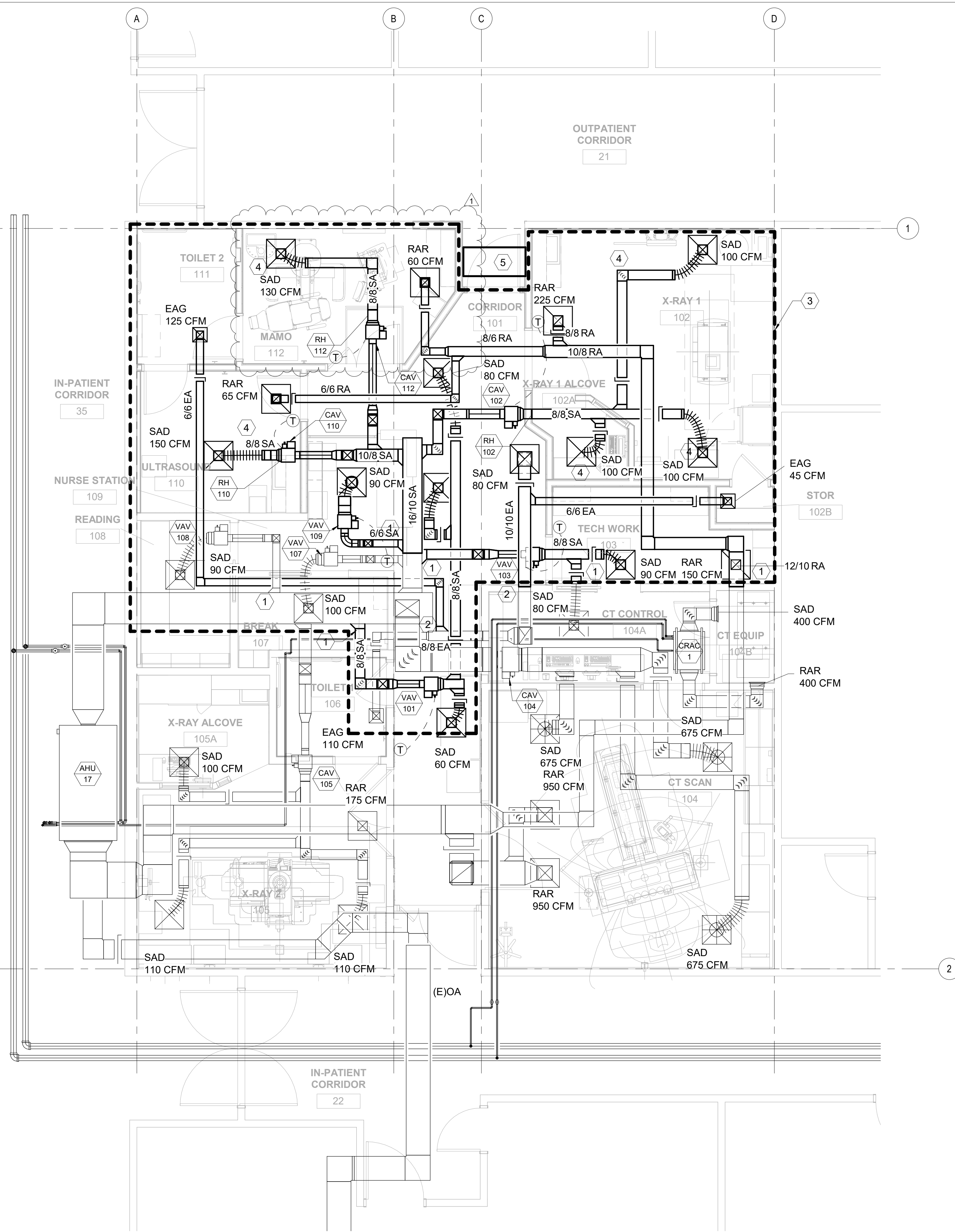
220038-01

DRAWING NO.

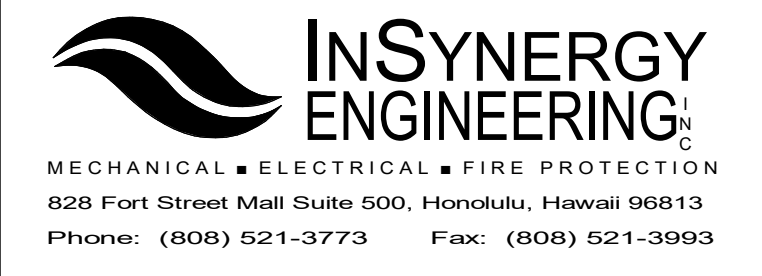
A-701

SHEET ISSUE DATE:

06/18/21



- KEYED NOTES:**
- ① CONNECTION TO PHASE 2 SYSTEM
 - ② CONNECT TO EF-11 SYSTEM
 - ③ PHASE 3 WORK AREA
 - ④ PROVIDE 5' MINIMUM FLEX DUCT LENGTH TO DIFFUSER
 - ⑤ REUSE AND RELOCATE 48x24 RA DIFFUSER FOR IN HALLWAY IN NEW CEILING



#	Date	Description
1	09/17/21	ADDENDUM 1

CONSTRUCTION / BID DOCUMENTS
08/16/21

This work was prepared by me or under my supervision and construction of this project will be under my observation

Supervision and Observation of this project is as defined in Section 1.2 of the Hawaii Administrative Rules, Title 16, Chapter 115, Professional Engineers, Architects, Land Surveyors, and Landscape Architects.



PROJECT TITLE

HHSC KAUAI

KVMH IMAGING DEPARTMENT RENOVATIONS

FILENAME:
C:\Users\keola\Documents\KVMH-CT_M18_kwilliams25L9J.rvt

DRAWING TITLE

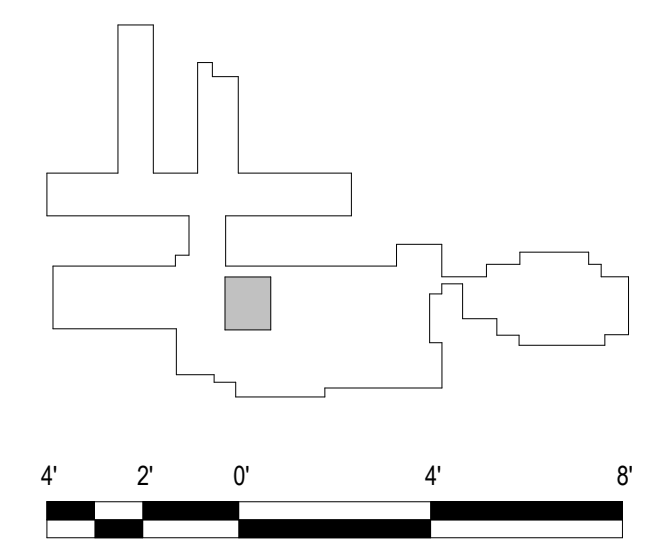
MECHANICAL NEW WORK PLAN - PHASE 3

SCALE: 1/4" = 1'-0"

DRAWN BY:	CHECKED BY:
ISE	YH

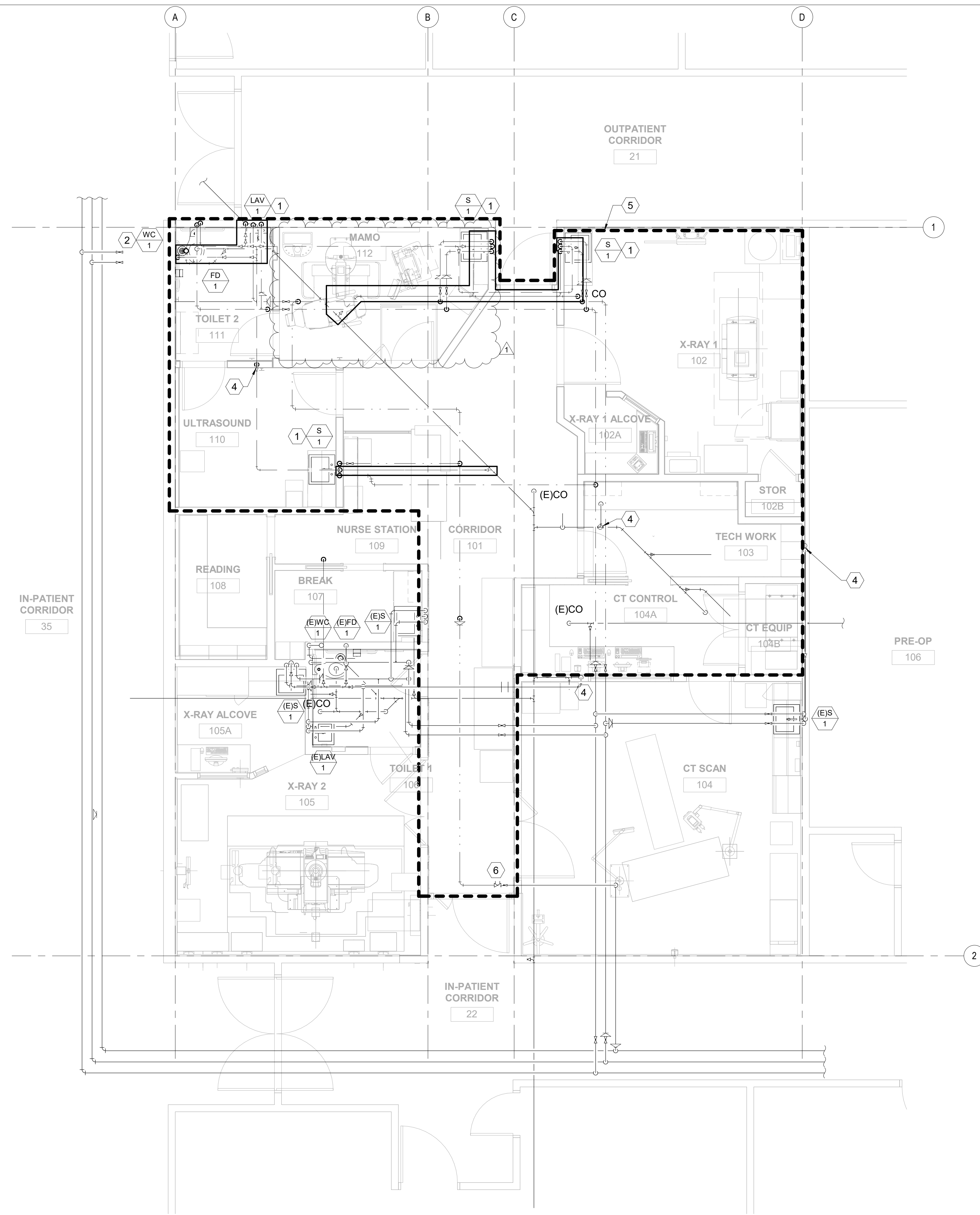
PROJECT NO.	DRAWING NO.
20162	M-203

SHEET ISSUE DATE:	
06/18/21	



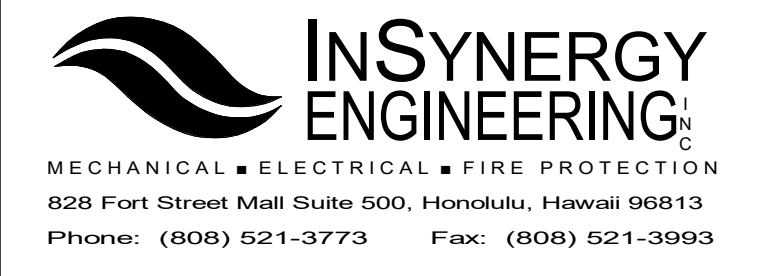
1 MECHANICAL NEW WORK PLAN - PHASE 3
SCALE: 1/4" = 1'-0"

Type in Central File Path Here 9/15/2021 5:01:38 PM



KEYED NOTES:

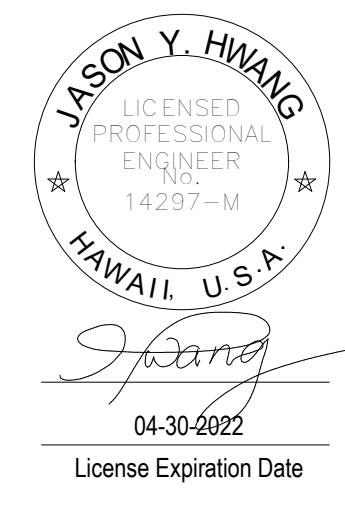
- 1 SAWCUT CONCRETE FOR NEW SANITARY PIPING UNDER SLAB
- 2 CONNECT TO (E)SANITARY CONNECTION AT FLOOR
- 3 VALVES INSTALLED IN PHASE 1 TO CONNECT TO EXISTING PIPING. VALVES WILL REMAIN CLOSED DURING PHASE 2.
- 4 (E)VTR
- 5 PHASE 3 WORK AREA
- 6 CIRCUIT SETTER FOR HWR. 0.5 GPM.



#	Date	Description
1	09/17/21	ADDENDUM 1

CONSTRUCTION / BID DOCUMENTS
08/16/21

This work was prepared by me or under my supervision and construction of this project will be under my observation



Supervision and Observation of this project is as defined in Section 1.2 of the Hawaii Administrative Rules, Title 16, Chapter 115, Professional Engineers, Architects, Land Surveyors, and Landscape Architects.

PROJECT TITLE

HHSC KAUAI

KVMH IMAGING DEPARTMENT RENOVATIONS

FILENAME:
C:\Users\keola\Documents\KVMH-CT_M18_kwilliams25L9J.rvt

DRAWING TITLE
PLUMBING NEW WORK PLAN - PHASE 3

SCALE: 1/4" = 1'-0"

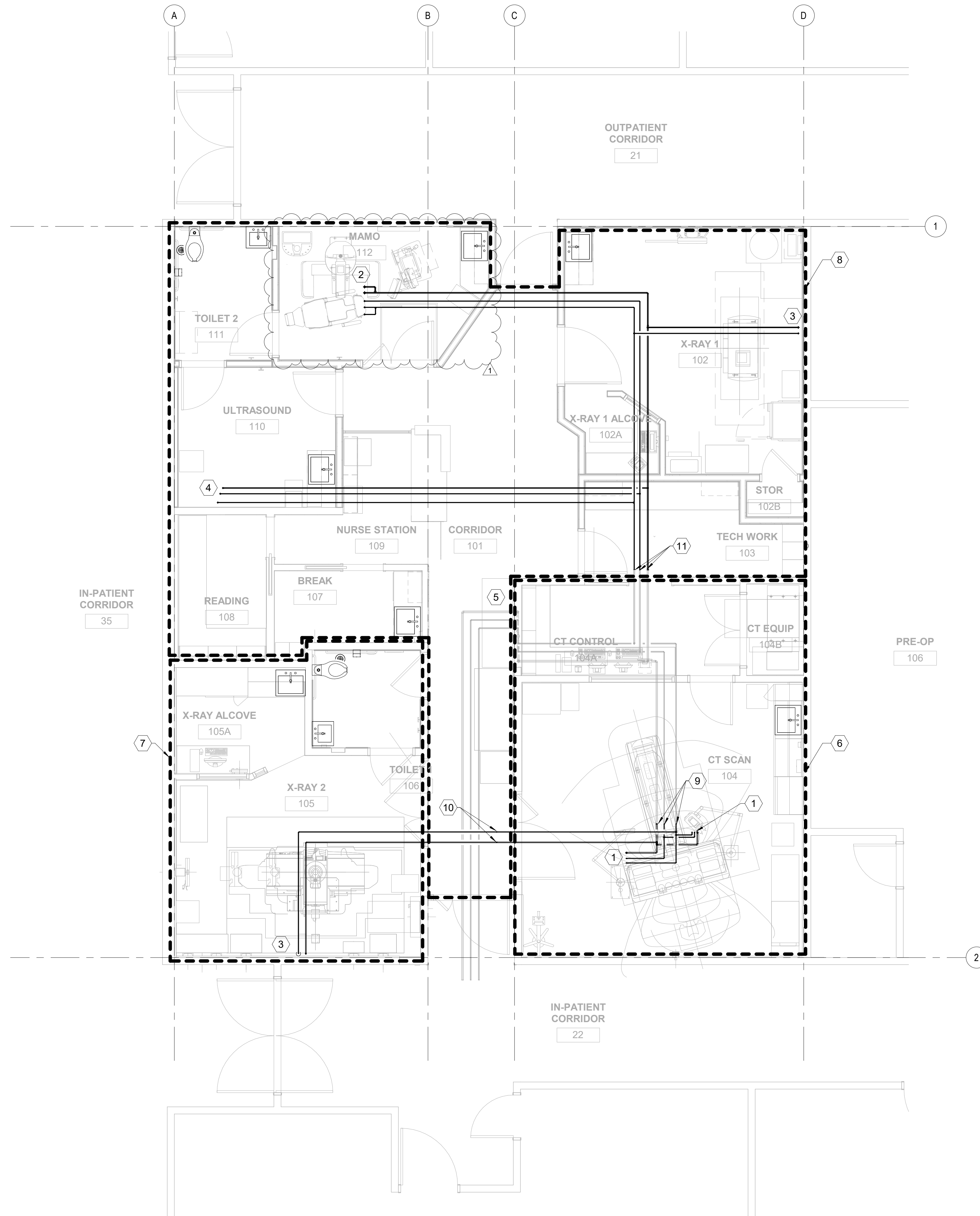
DRAWN BY: ISE	CHECKED BY: YH
------------------	-------------------

PROJECT NO. 20162	DRAWING NO. P-203
----------------------	-----------------------------

SHEET ISSUE DATE:
06/18/21



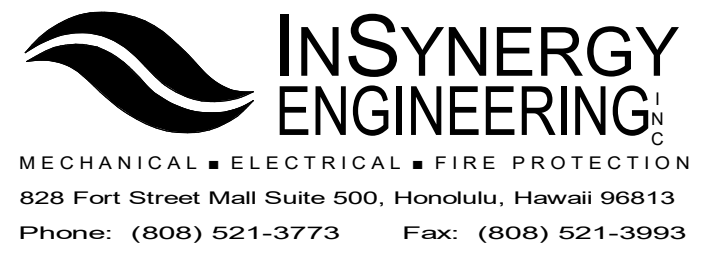
1 PLUMBING NEW WORK PLAN - PHASE 3
SCALE: 1/4" = 1'-0"



1 PLUMBING MEDICAL GAS NEW WORK PLAN
SCALE: 1/4" = 1'-0"

KEYED NOTES:

- 1 CT SCAN, CEILING MOUNTED OUTLET. 1x OX, 1x VA, 1x MA
- 2 MAMOGRAPH ROOM, CEILING MOUNTED OUTLET, 2x OX, 2x VA, 1x MA
- 3 X-RAY ROOM, WALL MOUNTED, 1x OX, 1x VA
- 4 ULTRASOUND ROOM, CEILING MOUNTED OUTLET, 1x OX, 1x VA, 1x MA
- 5 EXISTING MEDICAL GAS ZONE VALVE AND ALARM BOX
- 6 PHASE 1 WORK AREA
- 7 PHASE 2 WORK AREA
- 8 PHASE 3 WORK AREA
- 9 POC FOR PHASE 1 MED GAS PIPING. CAP PIPING TO PHASE 2 WORK ABOVE CEILING
- 10 POC FOR PHASE 2 MED GAS PIPING. CONNECTED TO NEW PHASE 1 PIPING.
- 11 POC FOR PHASE 3 MED GAS PIPING



#	Date	Description
1	09/17/21	ADDENDUM 1

CONSTRUCTION / BID DOCUMENTS
08/16/21

This work was prepared by me or under my supervision and construction of this project will be under my observation. Supervision and Observation of this project is as defined in Section 1.2 of the Hawaii Administrative Rules, Title 16, Chapter 115, Professional Engineers, Architects, Land Surveyors, and Landscape Architects.



PROJECT TITLE
HHSC KAUAI
KVMH IMAGING DEPARTMENT RENOVATIONS

FILENAME:
C:\Users\keola\Documents\KVMH-CT_M18_kwilliams25L9J.rvt

DRAWING TITLE
PLUMBING MEDICAL GAS NEW WORK PLAN

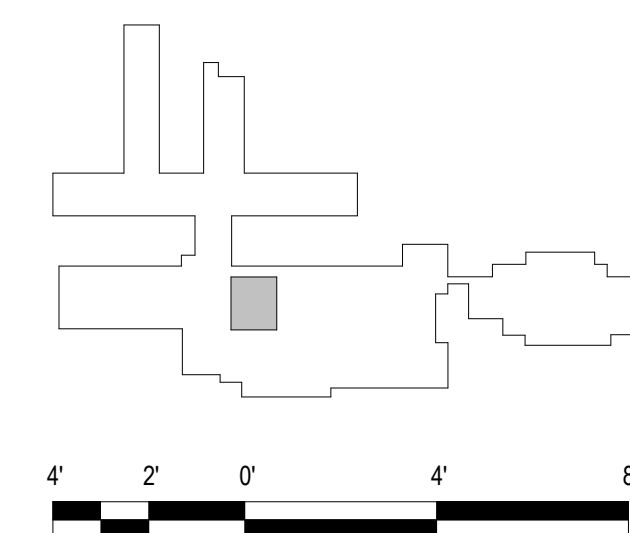
SCALE: 1/4" = 1'-0"

DRAWN BY: ISE
CHECKED BY: YH

PROJECT NO. 20162
DRAWING NO.

SHEET ISSUE DATE:
06/18/21

P-204



#	Date	Description
1	09/17/2021	ADDENDUM 1

CONSTRUCTION/ BID DOCUMENTS
 08/16/21

This work was prepared by me or under my supervision and construction of this project will be under my observation



Supervision and Observation of this project is as defined in Section 1.2 of the Hawaii Administrative Rules, Title 16, Chapter 115, Professional Engineers, Architects, Land Surveyors, and Landscape Architects.

Ross N. Takai
 04-30-2022
 License Expiration Date

PROJECT TITLE

HHSC KAUAI

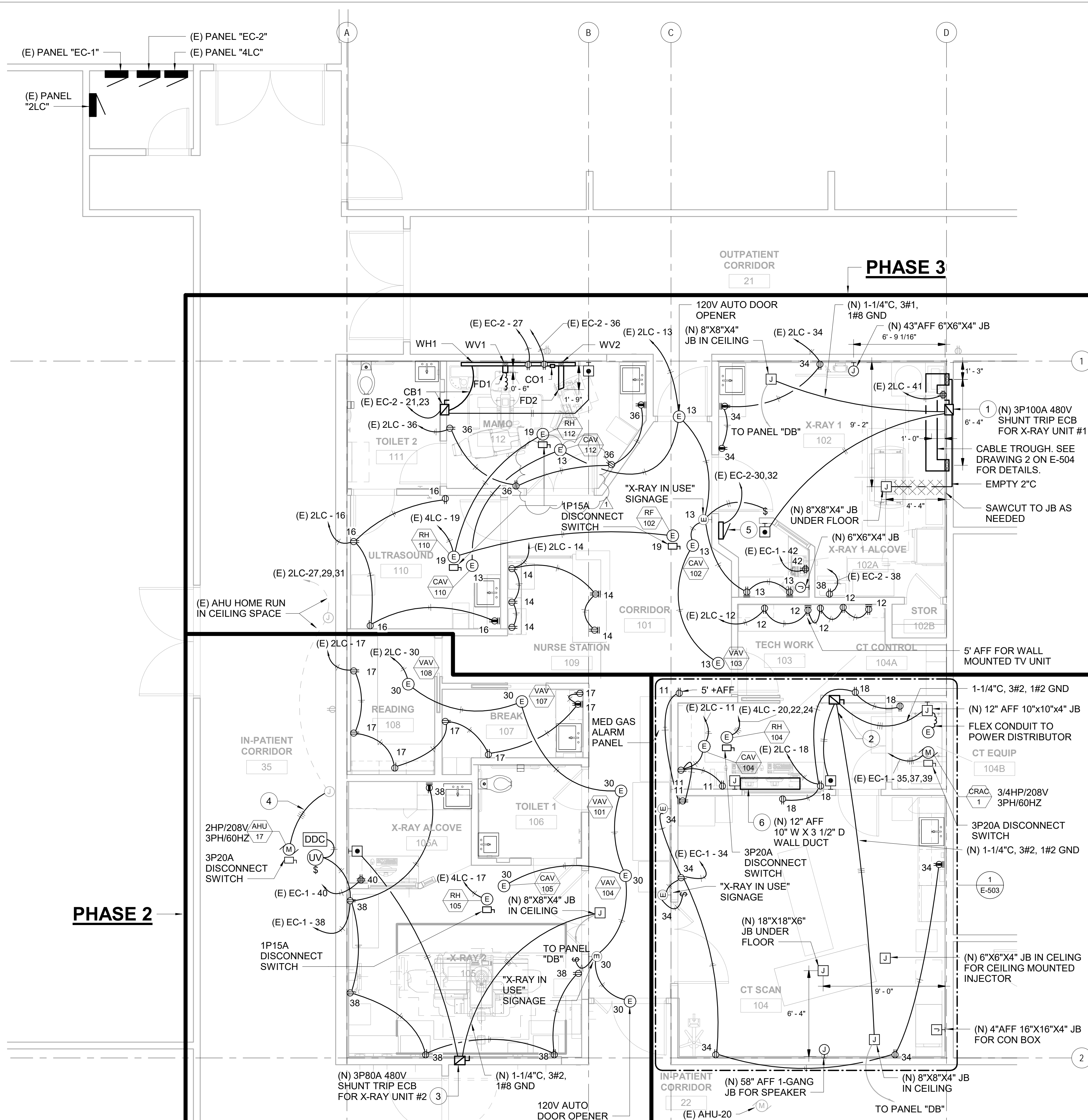
KVMH IMAGING DEPARTMENT RENOVATIONS

FILENAME:
 C:\Users\Jacob\Documents\KVMH-CT_E18_ibaba\MMQMU.rvt

DRAWING TITLE
CT ELECTRICAL POWER NEW PLAN

SCALE: 1/4" = 1'-0"

DRAWN BY: ISE	CHECKED BY: RT
PROJECT NO. 220038-01	DRAWING NO. E-404
SHEET ISSUE DATE: 05/14/21	



SHEET NOTES:

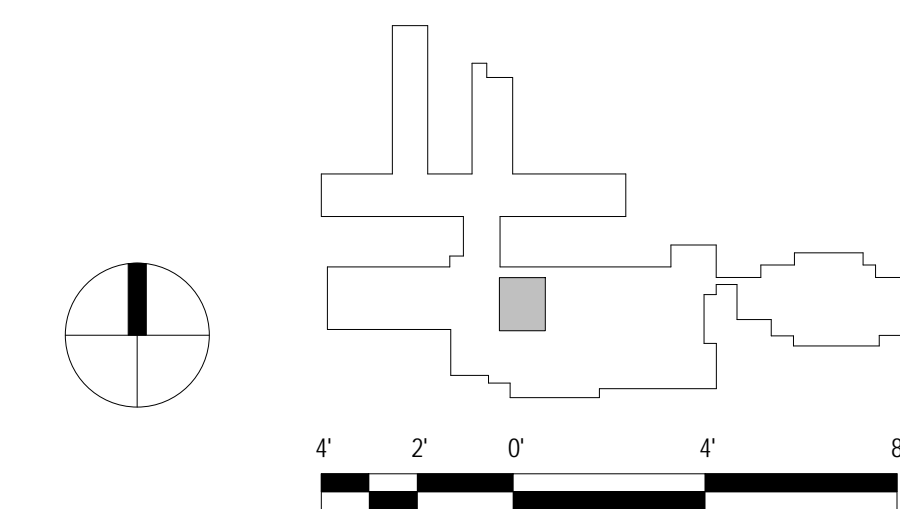
- POWER SOURCED FROM (E) PANEL DB LOCATED IN BOILER ROOM. SEE SHEET E-101 FOR (E) PANEL DB LOCATION. ROUTE CONDUIT AND WIRING TO NEW 3P70A SHUNT TRIP ECB FOR X-RAY UNIT #1. SEE DRAWING 3 ON SHEET E-502 FOR WIRING DIAGRAM.
- PULL NEW WIRE FOR (N) 3P100A SHUNT TRIP ECB FOR CT SCAN UNIT FROM (E) PANEL DB IN THE BOILER ROOM AND THROUGH (N) JUNCTION BOX. SEE SHEET E-101 FOR (E) PANEL DB LOCATION. SEE DRAWING 3 ON SHEET E-502 FOR WIRING DIAGRAM.
- NEW CONDUIT FROM OLD (E) CT SCAN UNIT ECB LOCATION TO (N) 3P80A ECB FOR X-RAY UNIT #2. PULL NEW WIRE FROM (E) PANEL DB TO (N) 3P80A ECB FOR X-RAY UNIT #2. SEE SHEET E-101 FOR (E) PANEL DB LOCATION. SEE DRAWING 3 ON SHEET E-502 FOR WIRING DIAGRAM.
- CONNECT (N) AHU-17 TO (E) JUNCTION BOX AND AIR HANDLER HOME RUN CIRCUIT 2LC-27,29,31.
- 120/208-240 VAC SINGLE PHASE FLUSH MOUNTED LOAD CENTER WITH SINGLE MAIN BREAKER. LOAD CENTER TO CONTAIN BREAKERS WITH RATINGS AS FOLLOWS:

BRANCH CIRCUIT	BOX LOCATION	120 VAC
PSI BOX	"I"	15 AMP

SEE DRAWING 2 ON SHEET E-504 FOR BOX "I" LOCATION.

- CONTRACTOR TO COORDINATE WITH CT EQUIPMENT VENDOR FOR EXACT WALL DUCT DIMENSIONS AND LOCATION. SEE DRAWING 2 ON SHEET E-503 FOR TYPICAL CT CONTROL ROOM WIREWAY DETAIL.
- SEE DRAWING 1 ON SHEET E-503 FOR CT SCAN ROOM SCHEMATIC CONDUIT FLOOR PLAN. CONTRACTOR TO CONFIRM WITH VENDOR SUPPLIER ON EXACT EQUIPMENT AND EQUIPMENT LOCATIONS.
- CONTRACTOR TO CONFIRM WITH VENDOR SUPPLIER ON EXACT EQUIPMENT LOCATIONS FOR THE X-RAY 2 ROOM. CONTRACTOR TO PROVIDE ALL NECESSARY CONDUITS AND WALL DUCTS FOR VENDOR SUPPLIER TO RELOCATE ALL EQUIPMENT.
- SEE DRAWING 1 ON SHEET E-504 FOR MAMO ROOM EQUIPMENT WALL BOXES AND CONDUIT ELEVATION AND LEGEND. CONTRACTOR TO CONFIRM WITH VENDOR SUPPLIER ON EXACT EQUIPMENT AND EQUIPMENT LOCATIONS.
- SEE DRAWING 2 ON SHEET E-504 FOR X-RAY 1 TROUGH RISER DIAGRAM AND EQUIPMENT LEGEND. CONTRACTOR TO CONFIRM WITH VENDOR SUPPLIER ON EXACT EQUIPMENT AND EQUIPMENT LOCATIONS.

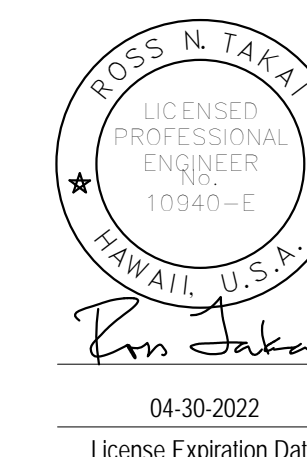
1 CT ELECTRICAL POWER NEW PLAN
 SCALE: 1/4" = 1'-0"



#	Date	Description
1	09/17/2021	ADDENDUM 1

CONSTRUCTION/ BID DOCUMENTS
 08/16/21

This work was prepared by me or under my supervision and construction of this project will be under my observation
 Supervision and Observation of this project is as defined in Section 1.2 of the Hawaii Administrative Rules, Title 16, Chapter 115, Professional Engineers, Architects, Land Surveyors, and Landscape Architects.



PROJECT TITLE

HHSC KAUAI

KVMH IMAGING DEPARTMENT RENOVATIONS

FILENAME:
 C:\Users\Jacob\Documents\KVMH-CT_E18_Ijaba\NMMQU.rvt

DRAWING TITLE
CT ELECTRICAL SIGNALING NEW PLAN

SCALE: 1/4" = 1'-0"

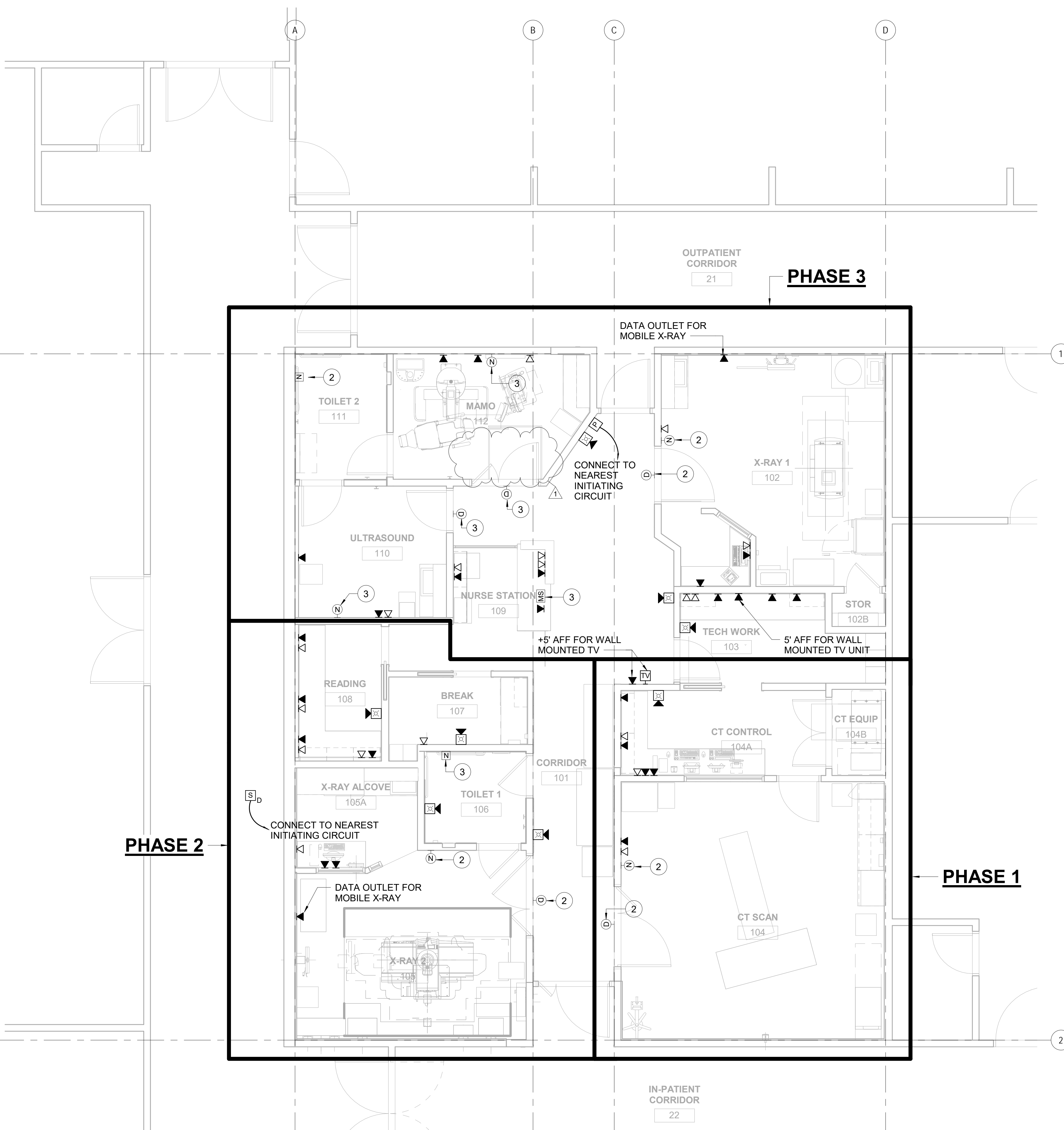
DRAWN BY:
ISE

CHECKED BY:
RT

PROJECT NO.
 220038-01

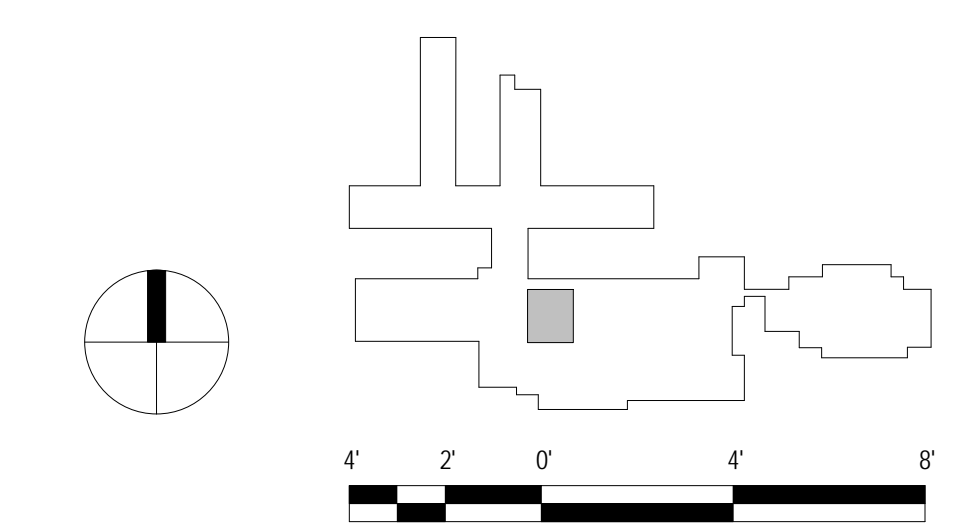
DRAWING NO.
E-405

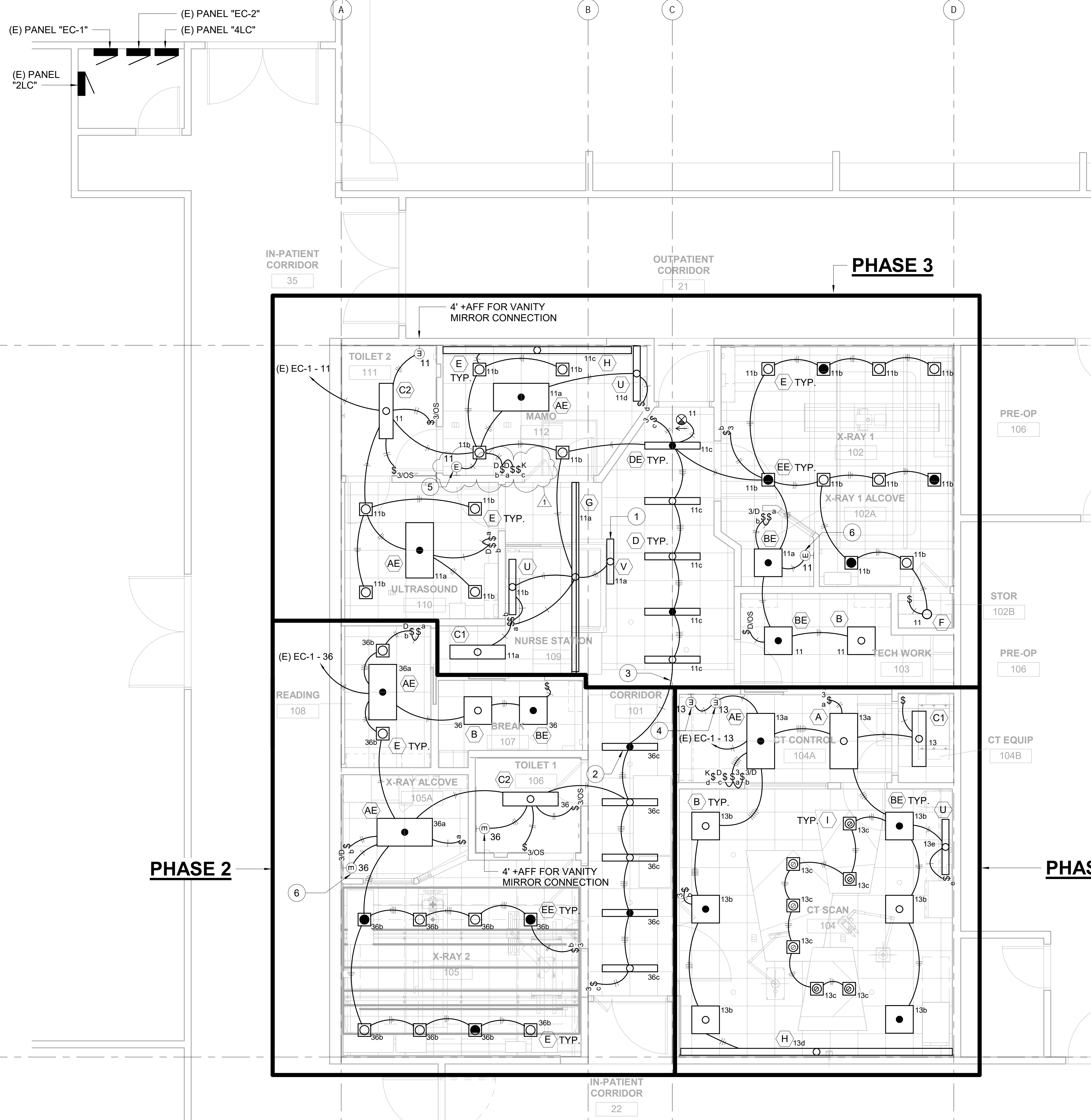
SHEET ISSUE DATE:
 05/14/21



- SHEET NOTES:**
1. CONNECT ALL FIRE ALARM NOTIFICATION DEVICES TO NEAREST EXISTING FIRE ALARM NOTIFICATION CIRCUIT(S).
 2. RELOCATE (E) NURSE CALL DEVICE IN ROOM TO NEW LOCATION. RECONNECT DEVICE TO EXISTING NURSE CALL SYSTEM EQUIPMENT.
 3. PROVIDE (N) NURSE CALL DEVICE. NURSE CALL DEVICE TO MATCH WITH EXISTING FACILITY NURSE CALL SYSTEM. CONNECT ALL DEVICES TO EXISTING NURSE CALL SYSTEM EQUIPMENT.

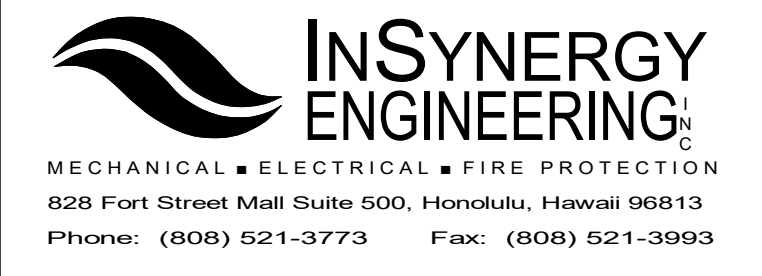
1 CT ELECTRICAL SIGNALING NEW PLAN
 SCALE: 1/4" = 1'-0"





SHEET NOTES:

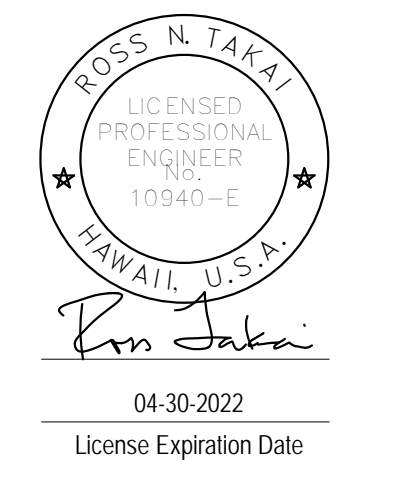
- 1 PROVIDE MOUNTING CHANNEL AND 24V DRIVER FOR LED TAPE LIGHT. 24V DRIVER LOCATED IN ACCESSIBLE LOCATION UNDERNEATH NURSE STATION TABLE. SEE LUMINAIRE SCHEDULE ON SHEET E-603 FOR MOUNTING CHANNEL DESCRIPTION. SEE SHEET A-914 FOR NURSE STATION EXTERIOR ELEVATIONS AND EDGE LIGHTING DETAIL.
- 2 DURING PHASE 2, RUN SWITCH LEG AND TRAVELER LEG FROM THREE WAY SWITCH UP TO INDICATED LIGHT FIXTURE. TRAVELER LEG TO BE RECONNECTED TO DURING PHASE 3.
- 3 DURING PHASE 3, RUN NEW CONDUIT INDICATED BY NOTE TO EXISTING FIXTURE INSTALLED DURING PHASE 2. RECONNECT TO EXISTING TRAVELER LEG LOCATED IN FIXTURE INDICATED BY NOTE 2.
- 4 EQUIPMENT CONNECTIONS FOR (N) LIGHTING CONTROL PANELS. SEE SHEET E-502 FOR LIGHTING CONTROL WIRING DIAGRAM.
- 5 EQUIPMENT CONNECTIONS FOR (N) LIGHTING CONTROL PANEL. SEE SHEET E-502 FOR LIGHTING CONTROL WIRING DIAGRAM. CONNECT (N) LIGHTING CONTROL PANEL TO 4 PORT POE NETWORK SWITCH INSTALLED DURING PHASE 1 LOCATED IN CT CONTROL ROOM CEILING SPACE.
- 6 EMERGENCY INVERTER FOR DOWNLIGHTS LOCATED IN ADJACENT X-RAY ROOM. LOCATE IN CEILING SPACE. PROVIDE DC WIRING TO ALL TYPE EE FIXTURES.



#	Date	Description
1	09/17/2021	ADDENDUM 1

CONSTRUCTION/ BID DOCUMENTS
08/16/21

This work was prepared by me or under my supervision and construction of this project will be under my observation. Supervision and Observation of this project is as defined in Section 1.2 of the Hawaii Administrative Rules, Title 16, Chapter 115, Professional Engineers, Architects, Land Surveyors, and Landscape Architects.



PROJECT TITLE
HHSC KAUAI
KVMH IMAGING DEPARTMENT RENOVATIONS

FILENAME:
C:\Users\Jacob\Documents\KVMH-CT_E18_IJaba\NMMQU.rvt

DRAWING TITLE
CT ELECTRICAL LIGHTING NEW PLAN

SCALE: 1/4" = 1'-0"	CHECKED BY: RT
DRAWN BY: ISE	DRAWING NO. E-406
PROJECT NO. 220038-01	SHEET ISSUE DATE: 05/14/21

1 CT ELECTRICAL LIGHTING NEW PLAN
SCALE: 1/4" = 1'-0"

