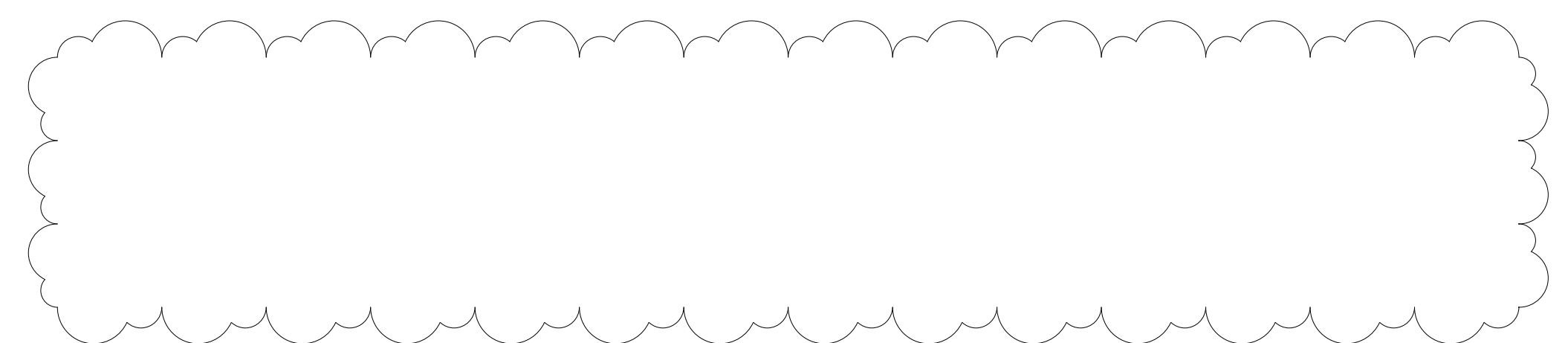


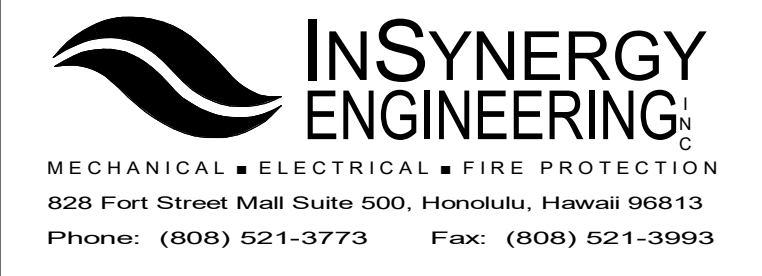
## LUMINAIRE SCHEDULE

TYPE	DESCRIPTION	LAMPS	MANUFACTURER / CATALOG NO.	COMMENTS
A	CEILING MOUNTED 2'X4' GRID RECESSED TROFFER. 20 GAUGE DIE-FORMED HOUSING. EXTRUDED WHITE LENS WITH OPTIONAL DOORFRAME WITH CLEAR POLYCARBONATE LENS. MATTE WHITE POWDER COAT FINISH. 120V. UL LISTED FOR WET LOCATION.	4000K, 80 CRI 50W LED, 6100 LUMENS	NEWSTAR LIGHTING AACG24-HC20-OC18/CP12-L2401C-RW-UN-DM OR APPROVED EQUAL	CONFIRM FINISH WITH ARCHITECT. CONFIRM CAPABILITY WITH LIGHTING CONTROL SYSTEM.
AE	SIMILAR TO TYPE A, EXCEPT PROVIDE 10W EMERGENCY BATTERY.	SAME AS TYPE A	NEWSTAR LIGHTING AACG24-HC20-OC18/CP12-L2401C-RW-UN-DM-EL1 OR APPROVED EQUAL	CONFIRM FINISH WITH ARCHITECT CONFIRM CAPABILITY WITH LIGHTING CONTROL SYSTEM.
B	SIMILAR TO TYPE A, EXCEPT PROVIDE 2'X2' SIZED FIXTURE.	4000K, 80 CRI 25W LED, 2750 LUMENS	NEWSTAR LIGHTING AACG22-HC20-OC18/CP12-L2401C-RW-UN-DM OR APPROVED EQUAL	CONFIRM FINISH WITH ARCHITECT CONFIRM CAPABILITY WITH LIGHTING CONTROL SYSTEM.
BE	SIMILAR TO TYPE B, EXCEPT PROVIDE 10W EMERGENCY BATTERY.	SAME AS TYPE B	NEWSTAR LIGHTING AACG22-HC20-OC18/CP12-L2401C-RW-UN-DM-EL1 OR APPROVED EQUAL	CONFIRM FINISH WITH ARCHITECT CONFIRM CAPABILITY WITH LIGHTING CONTROL SYSTEM.
C	CEILING MOUNTED 1'X4' GRID RECESSED TROFFER. 22 GAUGE DIE-FORMED HOUSING. 20 GAUGE C.R.S. DOOR FRAME. FROSTED ACRYLIC SHIELDING. WHITE POLYESTER POWDER COATED FINISH. 120V. UL LISTED FOR WET LOCATION.	4000K, 80 CRI 21W LED, 2700 LUMENS	H.E. WILLIAMS 50G-S14-L27/840-FAF12125-WET-DRV-UNV OR APPROVED EQUAL	CONFIRM FINISH WITH ARCHITECT CONFIRM CAPABILITY WITH LIGHTING CONTROL SYSTEM.
D	CEILING RECESSED GRID MOUNTED 2"W X 4"L LIGHT. T6 EXTRUDED ALUMINUM BODY. DIE-FORMED 20-GAUGE COLD-ROLLED STEEL REFLECTORS. PROVIDE WITH RECESSED T-BAR. FLUSH FROST WHITE SNAP-IN DIFFUSER.	4000K, 80 CRI 14W LED, 1382 LUMENS	FINELITE HP2RD4'S840F96LG120SCFC-10%C1FESW OR APPROVED EQUAL	CONFIRM FINISH WITH ARCHITECT CONFIRM CAPABILITY WITH LIGHTING CONTROL SYSTEM.
DE	SIMILAR TO TYPE D, EXCEPT PROVIDE 10W EMERGENCY BATTERY.	SAME AS TYPE D	FINELITE HP2RD4'S840F96LG120SCFC-10%C1FESWFACCHO OR APPROVED EQUAL	CONFIRM FINISH WITH ARCHITECT CONFIRM CAPABILITY WITH LIGHTING CONTROL SYSTEM.
E	CEILING RECESSED MOUNTED 4" DOWNLIGHT. ACRYLIC ENAMELED ALUMINUM HOUSING. LOW BRIGHTNESS CLEAR ALUMINUM SELF-FLANGED DOWNLIGHT CONE. 120V. UL LISTED FOR DAMP LOCATION.	4100K, 80 CRI 20.9W LED, 1538 LUMENS	KIRLIN LIGHTING MRR-04800-1500L-120-41K-WFL OR APPROVED EQUAL	CONFIRM FINISH WITH ARCHITECT CONFIRM CAPABILITY WITH LIGHTING CONTROL SYSTEM.
F	2.04"W X 0.70"H X 20.70"L UNDERCABINET LIGHT. ALUMINUM FINISH. LINE VOLTAGE INTEGRAL DRIVER. 120V.	4000K, 90CRI 7W LED, 525 LUMENS	FEELUX LIGHTING TUN7-4000K-120V-SF OR APPROVED EQUAL	CONFIRM FINISH WITH ARCHITECT
G	5.5" DIAMETER CIRCULAR DIMMABLE LED GLASS LIGHT. PENDANT MOUNTED AT 6'-6" AFF. CHROME FINISH. 120V.	4000K, 90CRI 2W LED, 180 LUMENS	KUZCO LIGHTING BOLLA PD3106 OR APPROVED EQUAL	CONFIRM FINISH WITH ARCHITECT CONFIRM CAPABILITY WITH LIGHTING CONTROL SYSTEM.
H	5"W X 3.58"H COLOR CHANGING RECESSED IN GRID LINEAR LIGHT. EXTRUDED ALUMINUM HOUSING. DIRECT DISTRIBUTION. TELESCOPING MODULE FOR +/- 6" FIELD ADJUSTABILITY. DMX DRIVER. PROVIDE ADJUSTABLE WALL BRACKET. ACRYLIC SATIN LENS. WHITE SEMI-GLOSS ANTIMICROBIAL FINISH. 120V. UL LISTED FOR DAMP LOCATION.	RGBW COLOR 7.8W/FT LED, 869 LM/FT	GAMMALUX FIXTURE: GPD5-2HL358T-UNIV-DMX-N-RECWA/GFR0-ASLMD-WSGA-DL DRIVER: LIN100M1 OR APPROVED EQUAL	CONFIRM FINISH WITH ARCHITECT. CONFIRM LENGTH OF RUN WITH ARCHITECT. FIXTURE DRIVER REQUIRED TO BE COMPATIBLE WITH LIGHTING CONTROLS. SEE SHEET E-502 FOR LIGHTING CONTROL WIRING DIAGRAM.
I	CEILING RECESSED MOUNTED 4" ROUND DOWNLIGHT. 18 AND 18 GAUGE HEAVY DUTY POWDER COATED COLD ROLLED STEEL FRAME. 1.5" THICK SPECIFICATION GRADE REFLECTOR. CLEAR TEMPERED LENS. WIDE FLOOD OPTICS. 120V. UL LISTED FOR WET LOCATION.	4000K, 90 CRI 19W LED, 1653 LUMENS	INTENSE LIGHTING FIXTURE: GD4DRL340-D101-WF REFLECTOR: IRD402W-SF OR APPROVED EQUAL	CONFIRM FINISH WITH ARCHITECT CONFIRM CAPABILITY WITH LIGHTING CONTROL SYSTEM.
X	CEILING MOUNTED ILLUMINATED EXIT SIGN. 5/8" PRESSURE DIE CASE ALUMINUM HOUSING. POWDER COAT FINISH.	2W LED	EVENLITE AUR-1-WH-CN OR APPROVED EQUAL	CONFIRM FINISH WITH ARCHITECT



## ELECTRICAL SYMBOL LIST

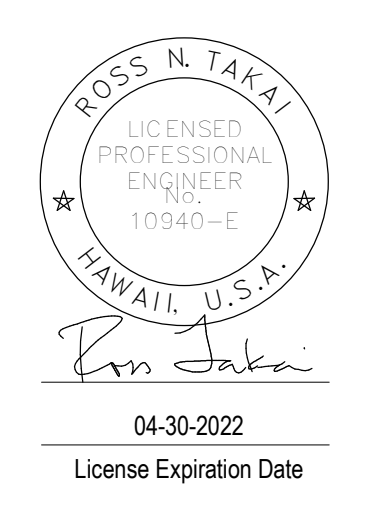
MOUNTING HEIGHT FROM FLOOR TO TOP	CL	SYMBOL		DESCRIPTION
		EXISTING	NEW	
				LED FIXTURE, 1X4 CEILING GRID MOUNTED
				LED FIXTURE, 2X4 CEILING GRID MOUNTED
				LED FIXTURE, 2X4 CEILING GRID MOUNTED WITH EMERGENCY BATTERY UNIT
				LED FIXTURE, UNDER CABINET OR MIRROR FIXTURE WALL MOUNTED
				LED FIXTURE, DOWNLIGHT PENDANT MOUNTED
				LED FIXTURE, DOWNLIGHT CEILING GRID MOUNTED
				LED FIXTURE, 2X2 CEILING GRID MOUNTED
				ILLUMINATED EXIT SIGN, CEILING MOUNTED, DIRECTIONAL ARROWS AS INDICATED
46"	\$ <sup>a</sup>			WALL BOX SWITCH/OCCUPANCY SENSOR, SELF-CONTAINED, DUAL-TECHNOLOGY TYPE, 120/277V, FLUSH WALL MOUNTED. "D" DENOTES DIMMER SWITCH.
46"	\$ <sub>3</sub>			THREE WAY SWITCH/OCCUPANCY SENSOR, SELF-CONTAINED, DUAL-TECH TYPE, 120/277V
46"	\$			MANUAL MOTOR STARTER WITH THERMAL OVERLOAD (SINGLE POLE) 1HP MAX.
18"	⊖			RECEPTACLE, DUPLEX, GROUNDING TYPE, 125V, NEMA TYPE 5-20R
	H/J			JUNCTION BOX, WALL MOUNTED/CEILING MOUNTED
18"	⊖			RECEPTACLE, DUPLEX, GFCI TYPE, 125V, NEMA TYPE 5-20R
18"	⊖			RECEPTACLE, SINGLE, SPECIAL PURPOSE, 250V-10, NEMA CONFIGURATION AS NOTED
	⊖			RECEPTACLE, DUPLEX, 6" ABOVE COUNTER TOP, 125V, NEMA TYPE 5-20R
	⊖			RECEPTACLE, DUPLEX, GFCI TYPE, 6" ABOVE COUNTER TOP, 125V, NEMA TYPE 5-20R
	⊖			EQUIPMENT CONNECTION
	⊖			MOTOR CONNECTION
	⊖			NON-FUSED DISCONNECT SWITCH, 3P30A UNLESS OTHERWISE NOTED, VOLTAGE TO MATCH CIRCUITING
	⊖			ENCLOSED CIRCUIT BREAKER
	⊖			PANELBOARD
8'-0"	H/S			SPEAKER, WALL MOUNTED/CEILING MOUNTED
	⊖			COMMUNICATION OUTLET BOX, WALL MOUNTED PROVIDED WITH TWO CAT 6 CABLES UON
46"	P			FIRE ALARM MANUAL PULL STATION
6'-10"				FIRE ALARM AUDIO/VISUAL SIGNALLING DEVICE, SEMI - FLUSH MOUNTED
	⊖			MIRROR LIGHT FRAME
	⊖			IN-USE LIGHT FRAME OR SWITCH
	⊖			EMERGENCY PUSH SHUTOFF BUTTON
	⊖			SHUNT TRIP
	⊖			UON DENOTES UNLESS OTHERWISE NOTED
	⊖			POWER TRANSFORMER
	⊖			GROUND
	⊖			CIRCUIT BREAKER
	⊖			TRANSFER SWITCH
	⊖			HOMERUN ARROW TO PANELBOARD. LETTER INDICATES PANELBOARD, NUMBERS INDICATES CIRCUITS.
	⊖			CONCEALED CONDUIT (HASHMARKS INDICATE 3-WIRES WITHIN, ALL OTHERS SIMILAR).
	⊖			DENOTES EXISTING/REMOVE & RELOCATE OR NEW EQUIPMENT
	⊖			DENOTES OCCUPANCY SENSOR "1"



#	Date	Description
1	09/17/21	Addendum 1

### CONSTRUCTION BID DOCUMENTS 08/16/21

This work was prepared by me or under my supervision and construction of this project will be under my observation  
Supervision and Observation of this project is as defined in Section 1.2 of the Hawaii Administrative Rules, Title 16, Chapter 115, Professional Engineers, Architects, Land Surveyors, and Landscape Architects.



PROJECT TITLE  
**HHSC KAUAI**  
**SMMH IMAGING DEPARTMENT RENOVATIONS**

FILENAME:  
C:\Users\ikama\Documents\SMMH-CT\_BLDG\_E18\_ikamaBPP2A.rvt

DRAWING TITLE  
**ELECTRICAL SYMBOLS LIST**

SCALE:  
DRAWN BY: **ISE**  
CHECKED BY: **RT**  
PROJECT NO. **220038-01**  
DRAWING NO. **E-003**  
SHEET ISSUE DATE: **08/16/21**

#	Date	Description
1	09/17/21	Addendum 1

**CONSTRUCTION BID DOCUMENTS**  
**08/16/21**

This work was prepared by me or under my supervision and construction of this project will be under my observation  
 Supervision and Observation of this project is as defined in Section 1.2 of the Hawaii Administrative Rules, Title 16, Chapter 115, Professional Engineers, Architects, Land Surveyors, and Landscape Architects.



PROJECT TITLE

**HHSC KAUAI**

**SMMH IMAGING DEPARTMENT RENOVATIONS**

FILENAME:  
 C:\Users\ikama\Documents\SMMH-CT\_BLDG\_E18\_ikamaBPP2A.rvt

DRAWING TITLE  
**PARTIAL SITE PLAN**

SCALE: 1" = 20'-0"

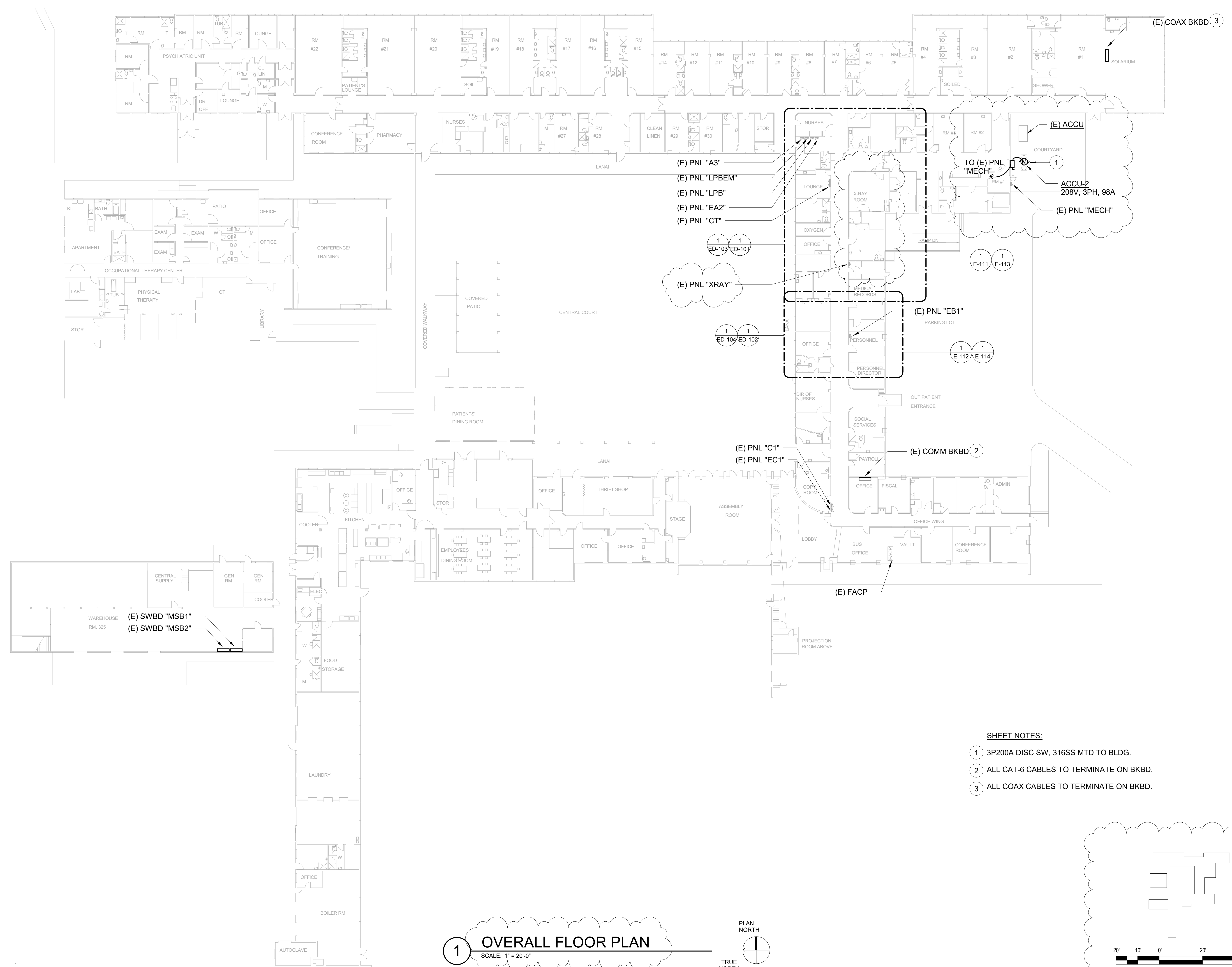
DRAWN BY:  
**ISE**

CHECKED BY:  
**RT**

PROJECT NO.  
**220038-01**

DRAWING NO.  
**E-100**

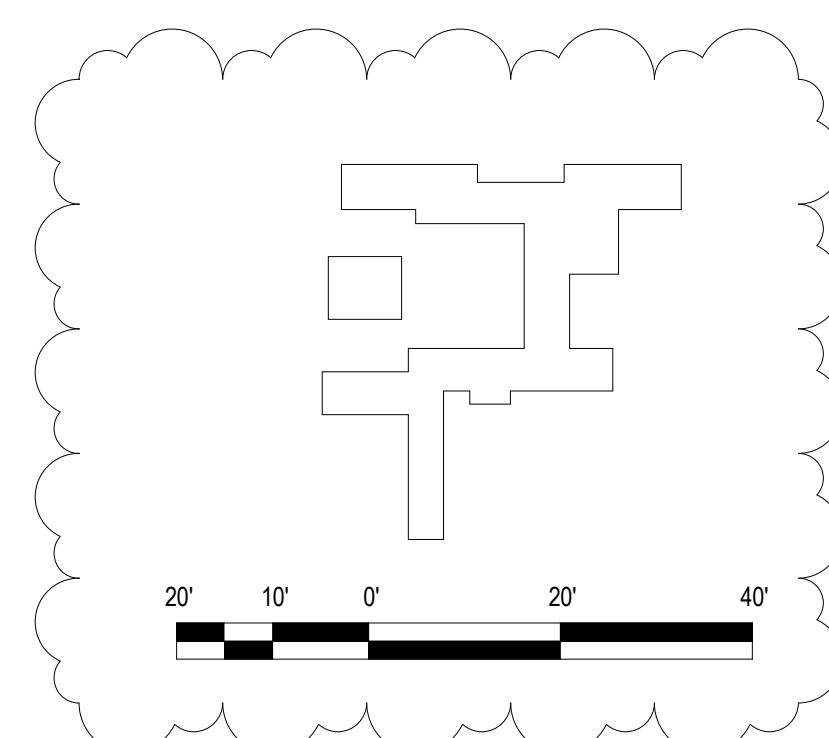
SHEET ISSUE DATE:  
**08/16/21**

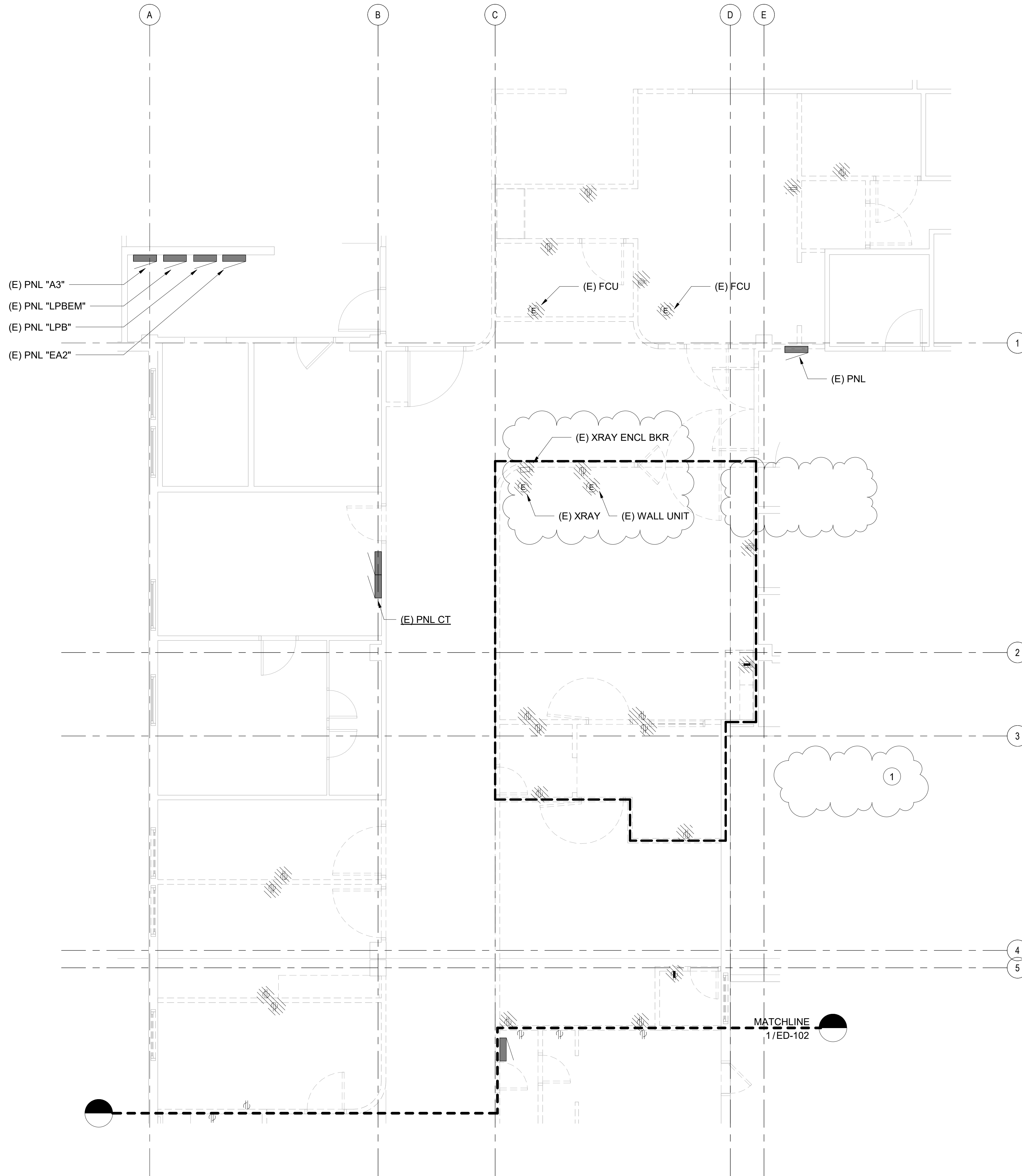


- SHEET NOTES:**
- 1 3P200A DISC SW, 316SS MTD TO BLDG.
  - 2 ALL CAT-6 CABLES TO TERMINATE ON BKBD.
  - 3 ALL COAX CABLES TO TERMINATE ON BKBD.

**1 OVERALL FLOOR PLAN**  
 SCALE: 1" = 20'-0"

PLAN NORTH  
 TRUE NORTH

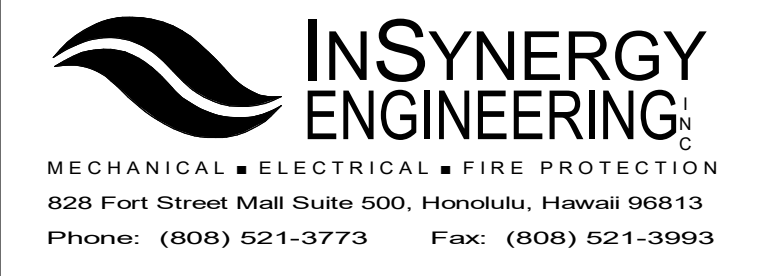




**SHEET NOTES:**

1. DISCONNECT AND REMOVE ALL EXISTING ELECTRICAL, TELECOMMUNICATIONS, NURSE CALL, FIRE ALARM DEVICES, ASSOCIATED CONDUITS AND WIRING FROM PROJECT AREA.
2. CONTRACTOR TO VERIFY CIRCUITRY BEFORE STARTING WORK.

1 CONTRACTOR TO REMOVE AND RELOCATE ELECTRICAL PANEL IN NEW XRAY ROOM.



REVISIONS		
#	Date	Description
1	09/17/21	Addendum 1

**CONSTRUCTION BID DOCUMENTS**  
08/16/21

This work was prepared by me or under my supervision and construction of this project will be under my observation.

Supervision and Observation of this project is as defined in Section 1.2 of the Hawaii Administrative Rules, Title 16, Chapter 115, Professional Engineers, Architects, Land Surveyors, and Landscape Architects.



PROJECT TITLE

**HHSC KAUAI**

**SMMH IMAGING DEPARTMENT RENOVATIONS**

FILENAME:  
C:\Users\ikama\Documents\SMMH-CT\_BLDG\_E18\_ikamaBPP2A.rvt

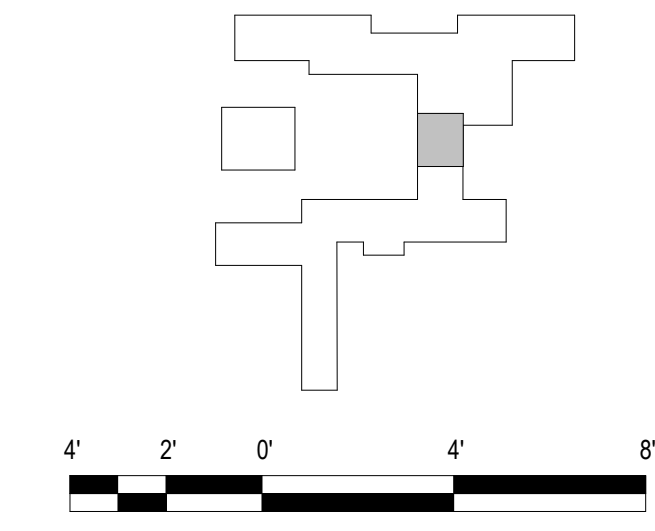
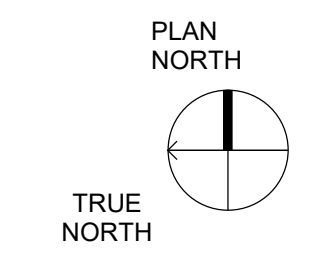
DRAWING TITLE

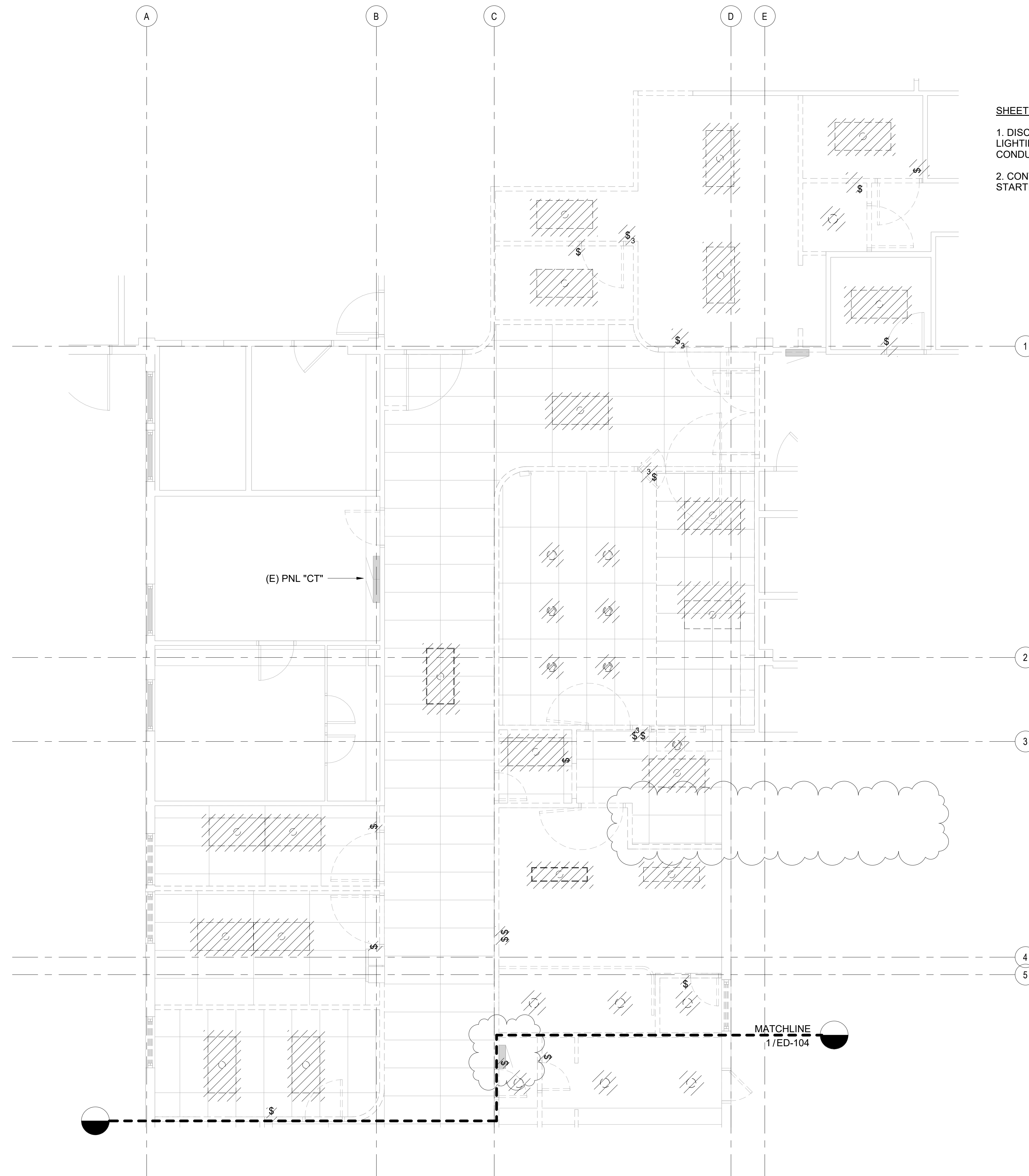
**ELECTRICAL DEMOLITION PLAN - 1**

SCALE: 1/4" = 1'-0"

DRAWN BY: <b>ISE</b>	CHECKED BY: <b>RT</b>
PROJECT NO. <b>220038-01</b>	DRAWING NO. <b>ED-101</b>
SHEET ISSUE DATE: 08/16/21	

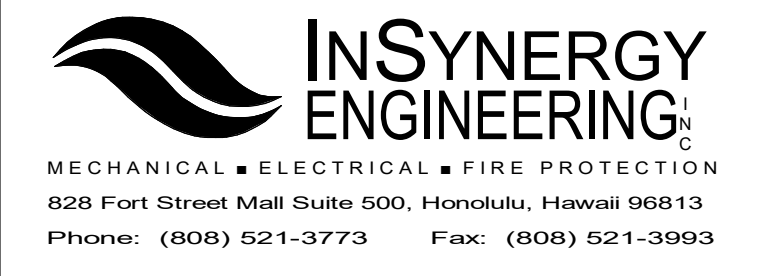
**1 ELECTRICAL DEMOLITION PLAN - 1**  
SCALE: 1/4" = 1'-0"





**SHEET NOTES:**

1. DISCONNECT AND REMOVE ALL EXISTING LIGHTING, LIGHTING CONTROLS, ASSOCIATED CONDUITS AND WIRING FROM PROJECT AREA.
2. CONTRACTOR TO VERIFY CIRCUITRY BEFORE STARTING WORK.

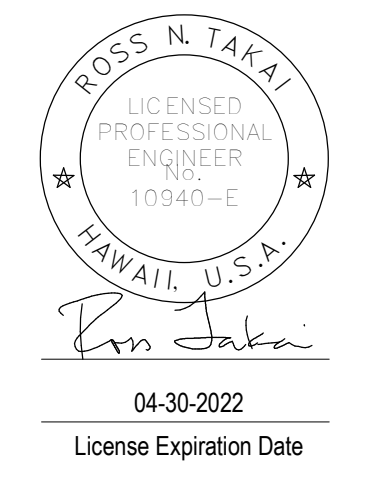


REVISIONS		
#	Date	Description
1	09/17/21	Addendum 1

**CONSTRUCTION BID DOCUMENTS**  
**08/16/21**

This work was prepared by me or under my supervision and construction of this project will be under my observation.

Supervision and Observation of this project is as defined in Section 1.2 of the Hawaii Administrative Rules, Title 16, Chapter 115, Professional Engineers, Architects, Land Surveyors, and Landscape Architects.



PROJECT TITLE

**HHSC KAUAI**

**SMMH IMAGING DEPARTMENT RENOVATIONS**

FILENAME:  
C:\Users\ikama\Documents\SMMH-CT\_BLDG\_E18\_ikamaBPP2A.rvt

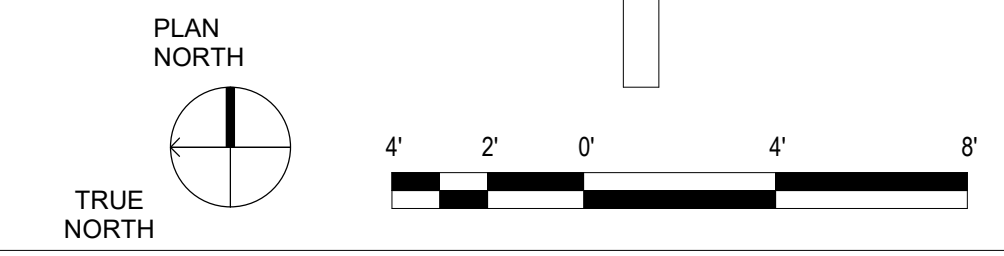
DRAWING TITLE

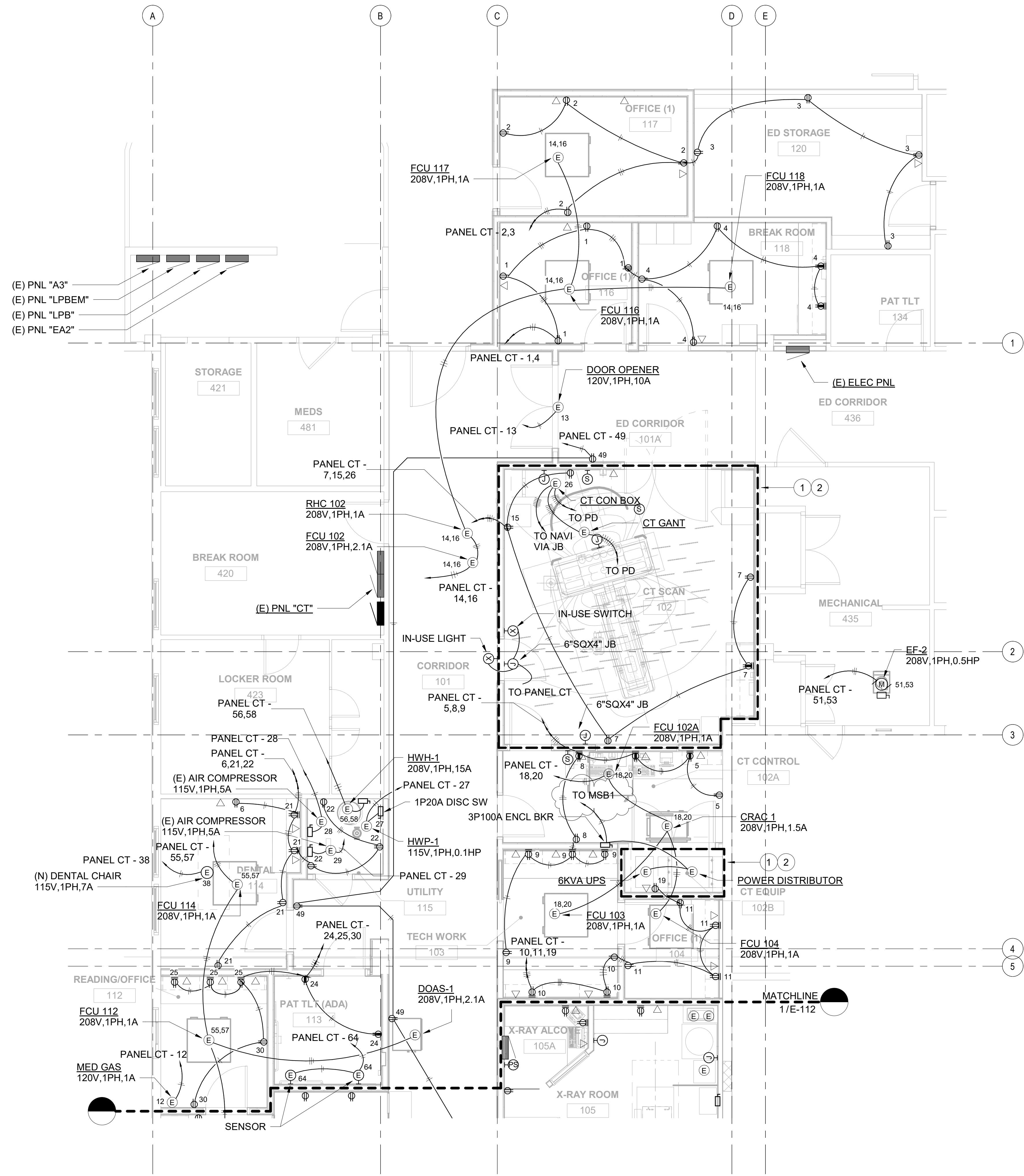
**LIGHTING DEMOLITION PLAN - 1**

SCALE: 1/4" = 1'-0"

DRAWN BY: <b>ISE</b>	CHECKED BY: <b>RT</b>
PROJECT NO. <b>220038-01</b>	DRAWING NO. <b>ED-103</b>
SHEET ISSUE DATE: <b>08/16/21</b>	

**1 LIGHTING DEMOLITION PLAN - 1**  
SCALE: 1/4" = 1'-0"

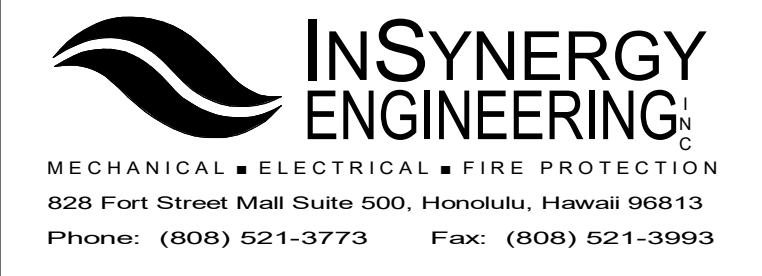




(E) PNL "A3"  
 (E) PNL "LPBEM"  
 (E) PNL "LPB"  
 (E) PNL "EA2"

**1 ELECTRICAL PLAN - 1**  
 SCALE: 1/4" = 1'-0"

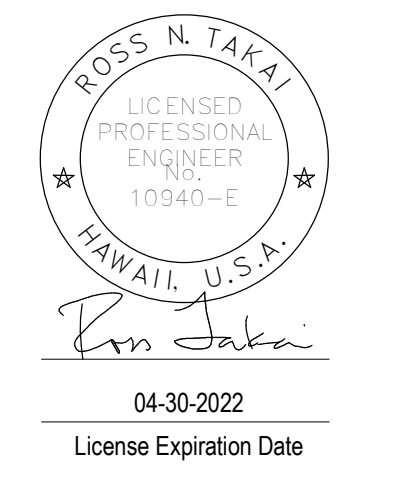
- SHEET NOTES:**
- CONTRACTOR TO PROVIDE ALL NECESSARY CONTROLS, CONDUIT, CONDUCTORS, CABLING, EQUIPMENT AND CONNECTIONS FOR A FULLY FUNCTIONING AND OPERATIONAL CT MACHINE. CONTRACTOR TO FOLLOW MANUFACTURER RECOMMENDATIONS.
  - SEE CT WIRING DIAGRAM FOR MORE DETAIL



#	Date	Description
1	09/17/21	Addendum 1

**CONSTRUCTION BID DOCUMENTS**  
**08/16/21**

This work was prepared by me or under my supervision and construction of this project will be under my observation.  
 Supervision and Observation of this project is as defined in Section 1.2 of the Hawaii Administrative Rules, Title 16, Chapter 115, Professional Engineers, Architects, Land Surveyors, and Landscape Architects.



**PROJECT TITLE**

**HHSC KAUAI**

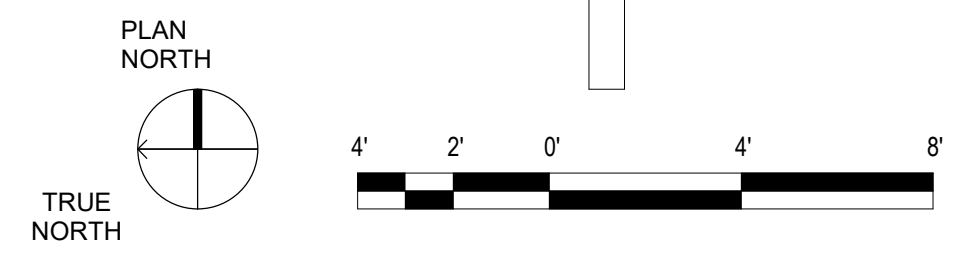
**SMMH IMAGING DEPARTMENT RENOVATIONS**

FILENAME:  
 C:\Users\ikama\Documents\SMMH-CT\_BLDG\_E18\_ikamaBPP2A.rvt

**DRAWING TITLE**

**ELECTRICAL PLAN - 1**

SCALE: 1/4" = 1'-0"	CHECKED BY: RT
DRAWN BY: ISE	DRAWING NO. <b>E-111</b>
PROJECT NO. 220038-01	SHEET ISSUE DATE: 08/16/21

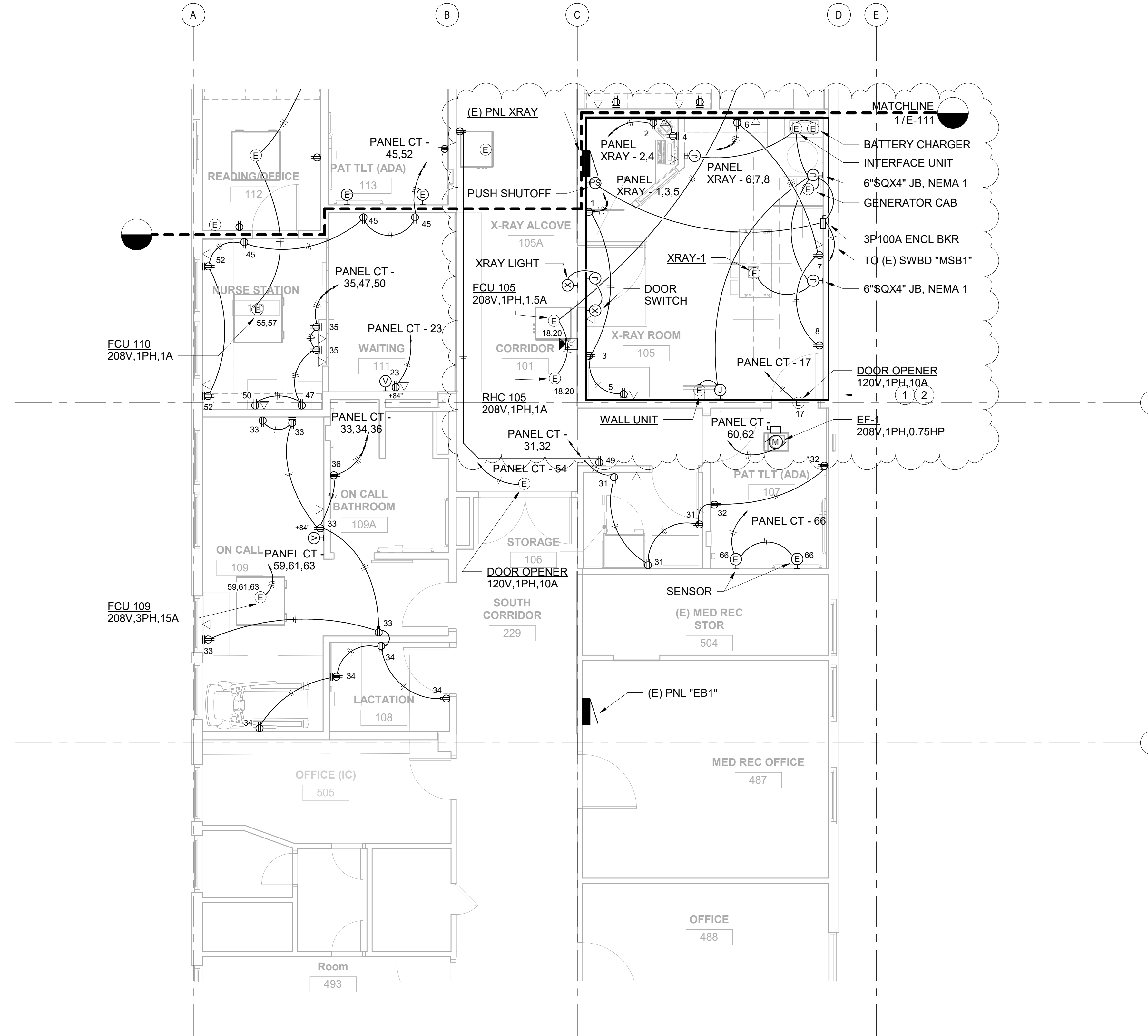


Type in Central File Path Here  
 9/21/2021 8:35:02 AM



**SHEET NOTES:**

- 1 CONTRACTOR TO PROVIDE ALL NECESSARY CONTROLS, CONDUIT, CONDUCTORS, EQUIPMENT AND CONNECTIONS FOR A FULLY FUNCTIONING AND OPERATIONAL XRAY MACHINE.
- 2 CONTRACTOR TO RELOCATE AND RECONNECT ALL THE ELECTRICAL POWER AND CONTROLS FOR EXISTING XRAY-1.



**1 ELECTRICAL PLAN - 2**  
 SCALE: 1/4" = 1'-0"

6

7

PLAN NORTH

TRUE NORTH

SCALE: 1/4" = 1'-0"

DRAWN BY: ISE	CHECKED BY: RT
PROJECT NO. 220038-01	DRAWING NO. <b>E-112</b>
SHEET ISSUE DATE: 08/16/21	

#	Date	Description
1	09/17/21	Addendum 1

**CONSTRUCTION BID DOCUMENTS**  
 08/16/21

This work was prepared by me or under my supervision and construction of this project will be under my observation.

Supervision and Observation of this project is as defined in Section 1.2 of the Hawaii Administrative Rules, Title 16, Chapter 115, Professional Engineers, Architects, Land Surveyors, and Landscape Architects.



PROJECT TITLE

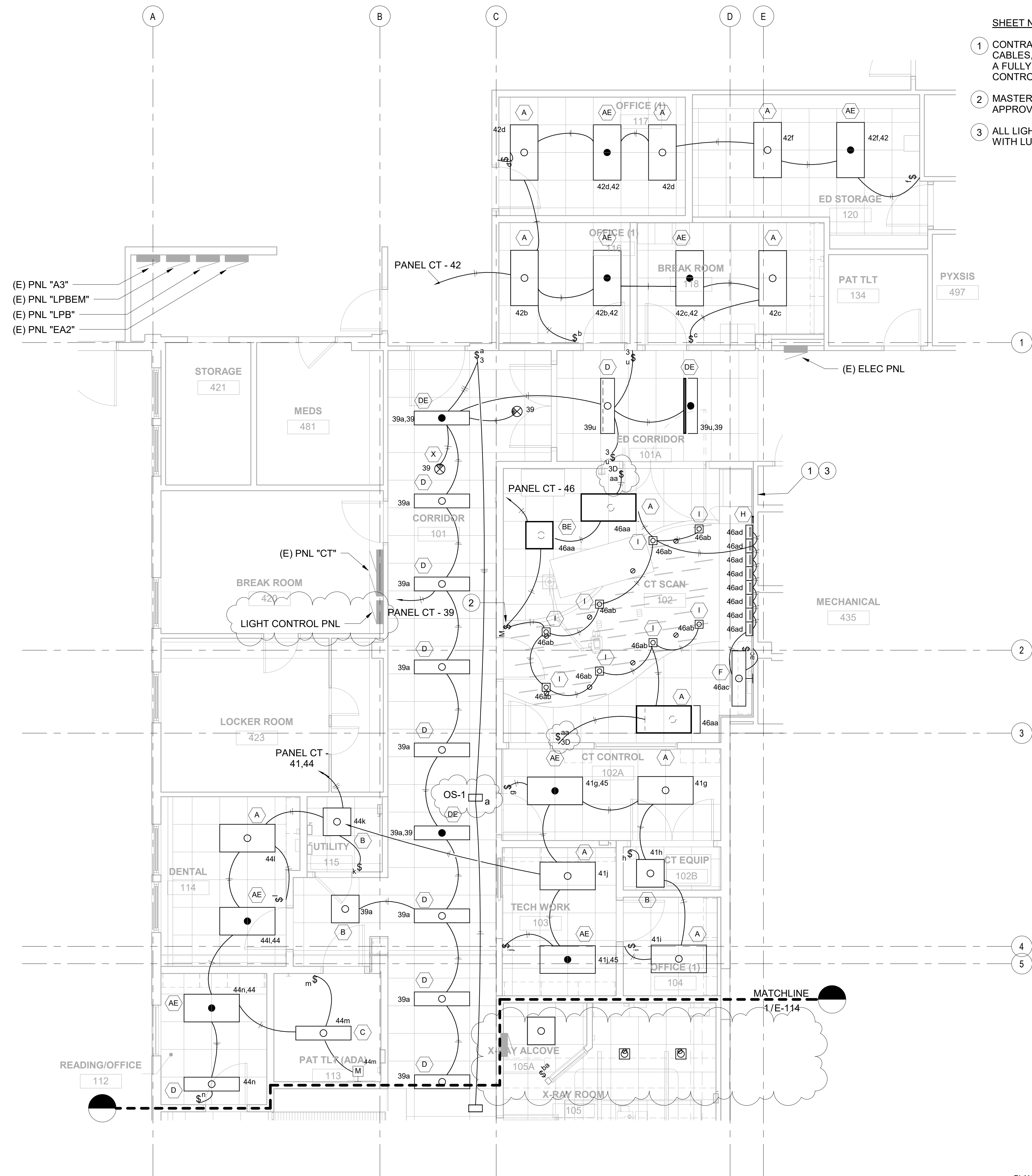
**HHSC KAUAI**

**SMMH IMAGING DEPARTMENT RENOVATIONS**

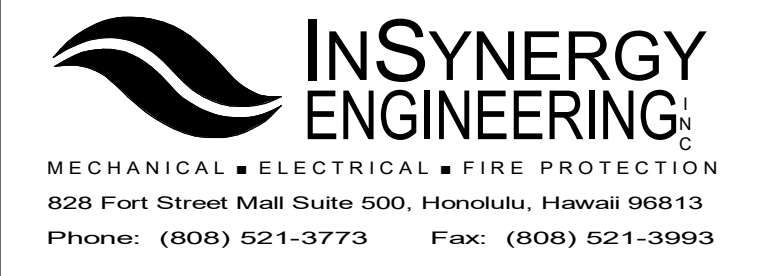
FILENAME:  
 C:\Users\ikama\Documents\SMMH-CT\_BLDG\_E18\_ikamaBPP2A.rvt

DRAWING TITLE

**ELECTRICAL PLAN - 2**



- SHEET NOTES:**
- 1 CONTRACTOR TO PROVIDE ALL NECESSARY CONTROLS, CABLES, CABLING, EQUIPMENT AND CONNECTIONS FOR A FULLY FUNCTIONING AND OPERATIONAL LIGHTING CONTROLS SYSTEM, LUTRON OR APPROVED EQUAL.
  - 2 MASTER CONTROLLER, LUTRON GRAFIK EYE OR APPROVED EQUAL.
  - 3 ALL LIGHTING BALAST IN CT ROOM TO BE COMPATIBLE WITH LUTRON GRAFIK EYE OR APPROVED EQUAL.



#	Date	Description
1	09/17/21	Addendum 1

**CONSTRUCTION BID DOCUMENTS**  
08/16/21

This work was prepared by me or under my supervision and construction of this project will be under my observation.

Supervision and Observation of this project is as defined in Section 1.2 of the Hawaii Administrative Rules, Title 16, Chapter 115, Professional Engineers, Architects, Land Surveyors, and Landscape Architects.



PROJECT TITLE

**HHSC KAUAI**

**SMMH IMAGING DEPARTMENT RENOVATIONS**

FILENAME:  
C:\Users\ikama\Documents\SMMH-CT\_BLDG\_E18\_ikamaBPP2A.rvt

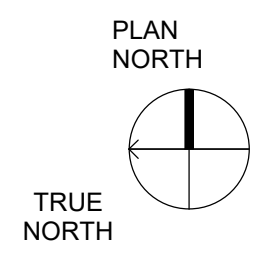
DRAWING TITLE

**LIGHTING PLAN - 1**

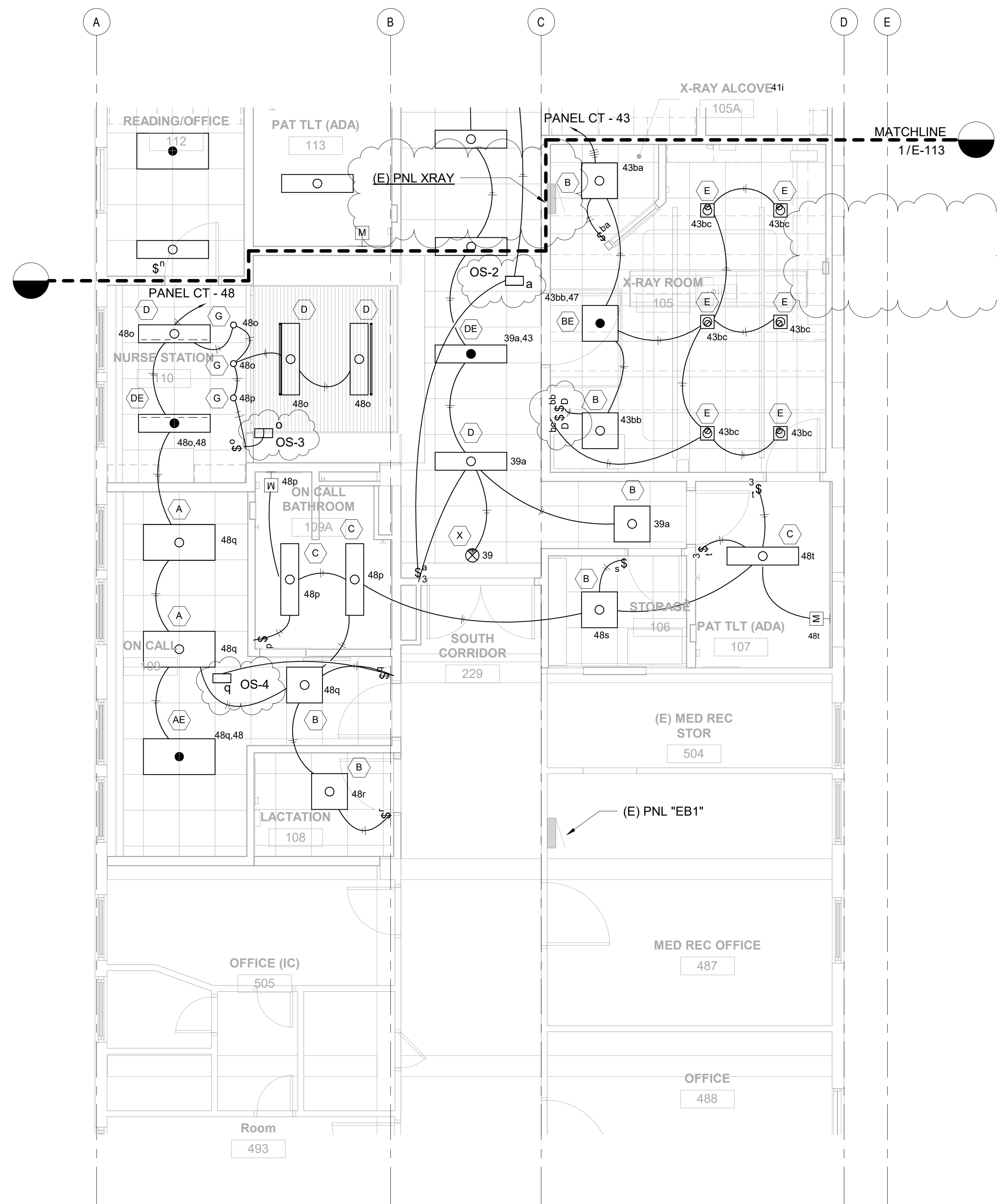
SCALE: 1/4" = 1'-0"

DRAWN BY: <b>ISE</b>	CHECKED BY: <b>RT</b>
PROJECT NO. <b>220038-01</b>	DRAWING NO. <b>E-113</b>
SHEET ISSUE DATE: <b>08/16/21</b>	

**1 LIGHTING PLAN - 1**  
SCALE: 1/4" = 1'-0"



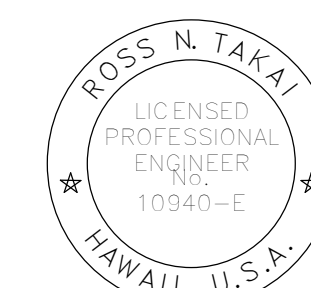
Type in Central File Path Here 9/21/2021 8:35:04 AM



#	Date	Description
1	09/17/21	Addendum 1

**CONSTRUCTION BID DOCUMENTS**  
**08/16/21**

This work was prepared by me or under my supervision and construction of this project will be under my observation.



Supervision and Observation of this project is as defined in Section 1.2 of the Hawaii Administrative Rules, Title 16, Chapter 115, Professional Engineers, Architects, Land Surveyors, and Landscape Architects.

*Ross N. Takai*  
 04-30-2022  
 License Expiration Date

PROJECT TITLE

**HHSC KAUAI**

**SMMH IMAGING DEPARTMENT RENOVATIONS**

FILENAME:  
 C:\Users\ikama\Documents\SMMH-CT\_BLDG\_E18\_ikamaBPP2A.rvt

DRAWING TITLE  
**LIGHTING PLAN - 2**

SCALE: 1/4" = 1'-0"

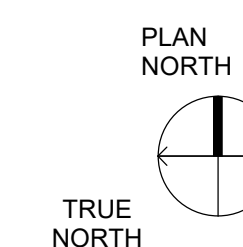
DRAWN BY: ISE  
 CHECKED BY: RT

PROJECT NO. 220038-01  
 DRAWING NO.

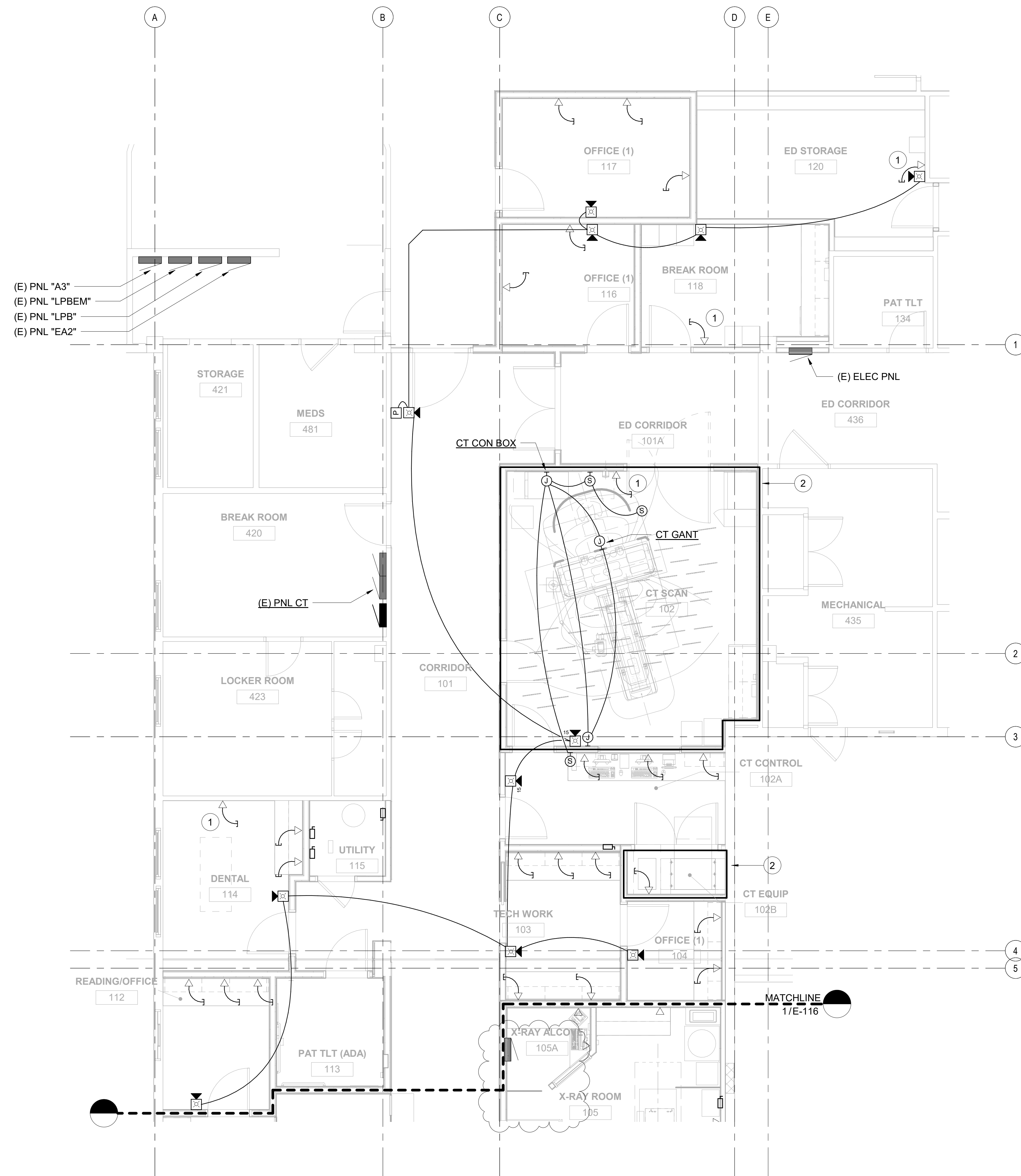
SHEET ISSUE DATE:  
 08/16/21

**E-114**

**1 LIGHTING PLAN - 2**  
 SCALE: 1/4" = 1'-0"

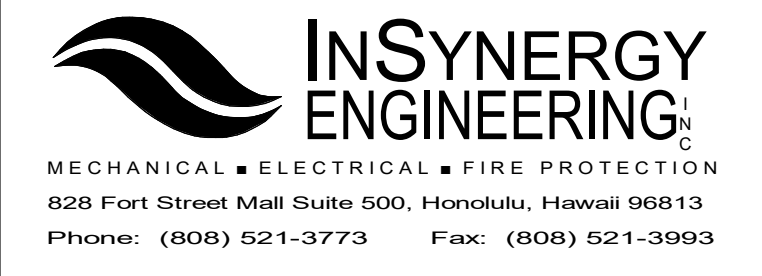






**1 SIGNAL PLAN - 1**  
SCALE: 1/4" = 1'-0"

- SHEET NOTES:**
1. COMMUNICATION CONDUITS STUB-UP INTO CEILING.
  2. CATEGORY-6 UTP TO BE INSTALLED FOR COMMUNICATION CABLING AND TERMINATE ON COMM BKBD.
  3. ALL COAX CABLES TO TERMINATE ON COAX BKBD.
  4. INSTALL ONE CAT-6 CABLE
  5. CONTRACTOR TO PROVIDE ALL NECESSARY CONTROLS, CONDUIT, CONDUCTORS, CABLING, EQUIPMENT AND CONNECTIONS FOR A FULLY FUNCTIONING AND OPERATIONAL CT MACHINE. CONTRACTOR TO FOLLOW MANUFACTURER RECOMMENDATIONS.



#	Date	Description
1	09/17/21	Addendum 1

**CONSTRUCTION BID DOCUMENTS**  
**08/16/21**

This work was prepared by me or under my supervision and construction of this project will be under my observation. Supervision and Observation of this project is as defined in Section 1.2 of the Hawaii Administrative Rules, Title 16, Chapter 115, Professional Engineers, Architects, Land Surveyors, and Landscape Architects.



**PROJECT TITLE**

**HHSC KAUAI**

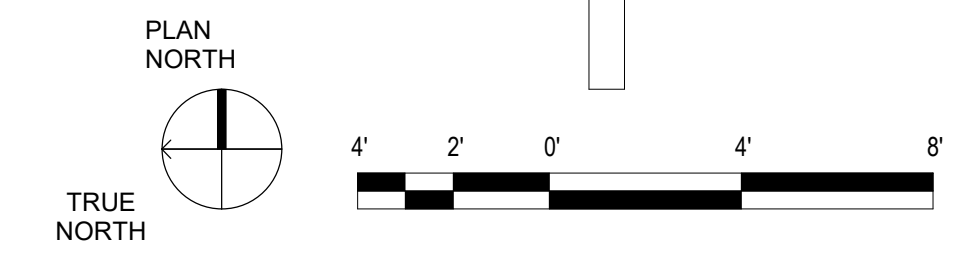
**SMMH IMAGING DEPARTMENT RENOVATIONS**

FILENAME:  
C:\Users\ikama\Documents\SMMH-CT\_BLDG\_E18\_ikamaBPP2A.rvt

DRAWING TITLE  
**SIGNAL PLAN - 1**

SCALE: 1/4" = 1'-0"

DRAWN BY: <b>ISE</b>	CHECKED BY: <b>RT</b>
PROJECT NO. <b>220038-01</b>	DRAWING NO. <b>E-115</b>
SHEET ISSUE DATE: <b>08/16/21</b>	



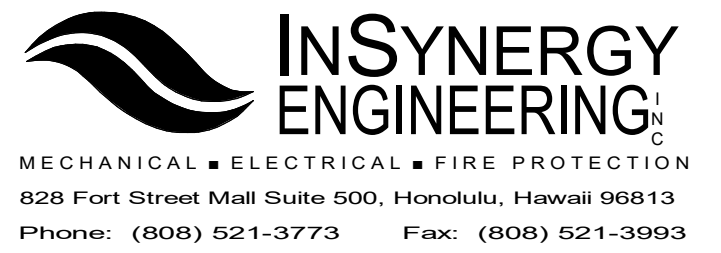
Type in Central File Path Here  
9/21/2021 8:35:06 AM

**FEEDER SCHEDULE: (UNLESS OTHERWISE NOTED)**

- 50/N/G = 1", 3#8, 1#8 NEUTRAL & 1#8 GND
- 60/-/G = 1", 3#6 & 1#8 GND
- 70/N/- = 1 1/4"C, 3#4 & 1#4 NEUTRAL
- 70/N/G = 1 1/4"C, 3#4, 1#4 NEUTRAL & 1#6 GND
- 100/N/G = 1.25", 3#2, 1#2 NEUTRAL & 1#8 GND
- 125/-/G = 1.5", 3#1, 1#6 GND
- 125/N/G = 1.5", 3#1, 1#1 NEUTRAL & 1#6 GND
- 150/N/G = 1.5", 3#1/0, 1#1/0 NEUTRAL & 1#6 GND
- 175/N/- = 2", 3#2/0 & 1#2/0 NEUTRAL
- 175/N/G = 2", 3#2/0, 1#2/0 NEUTRAL & 1#4 GND
- 200/N/G = 2.5", 3#3/0, 1#3/0 NEUTRAL & 1#6 GND
- 225/-/G = 2.5", 3#4/0 & 1#4 GND
- 225/N/G = 2.5", 3#4/0, 1#4/0 NEUTRAL & 1#4 GND
- 250/N/G = 3", 3#250, 1#250 NEUTRAL & 1#2 GND
- 300/N/G = 3", 3#350, 1#350 NEUTRAL & 1#4 GND
- 350/N/G = 4", 3#500, 1#500 NEUTRAL & 1#1/0 GND
- 400/-/G = 4", 3#500 & 1#1/0 GND
- 400/N/G = 4", 3#500, 1#500 NEUTRAL & 1#1/0 GND
- 500/-/G = 2 SETS 3", 3#250 & 1#2 GND
- 500/N/G = 2 SETS 3", 3#250, 1#250 NEUTRAL & 1#2 GND
- 600/-/G = 2 SETS 4", 3#350 & 1#2/0 GND
- 600/N/G = 2 SETS 4", 3#350, 1#350 NEUTRAL & 1#2/0 GND
- 800/N/G = 2 SETS 4", 3#500, 1#500 NEUTRAL & 1#2/0 GND
- 1000/N/G = 3 SETS 4", 3#500, 1#500 NEUTRAL & 1#3/0 GND
- 1200/N/G = 4 SETS 4", 3#350, 1#350 NEUTRAL & 1#3/0 GND

**SHEET NOTES:**

- CONTRACTOR TO VERIFY CIRCUITRY BEFORE STARTING WORK.
- CUT CONDUIT AND INTERCEPT EXISTING XRAY FEEDERS UNDERNEATH BUILDING.
- CONTRACTOR TO PROVIDE ALL NECESSARY CONTROLS, CONDUIT, CONDUCTORS, CABLING, EQUIPMENT AND CONNECTIONS FOR A FULLY FUNCTIONING AND OPERATIONAL CT/XRAY MACHINE. CONTRACTOR TO FOLLOW MANUFACTURER RECOMMENDATIONS.
- EQUIPMENT MANUFACTURER TO PROVIDE CONDUIT & CONDUCTORS BETWEEN EQUIPMENT.
- INTERCEPT EXISTING CONDUIT WITH JUNCTION BOX UNDERNEATH BUILDING AND EXTEND XRAY FEEDERS TO NEW 100A ENCLOSED BREAKER.



#	Date	Description
1	09/17/21	Addendum 1

**CONSTRUCTION BID DOCUMENTS**  
**08/16/21**

This work was prepared by me or under my supervision and construction of this project will be under my observation. Supervision and Observation of this project is as defined in Section 1.2 of the Hawaii Administrative Rules, Title 16, Chapter 115, Professional Engineers, Architects, Land Surveyors, and Landscape Architects.



PROJECT TITLE

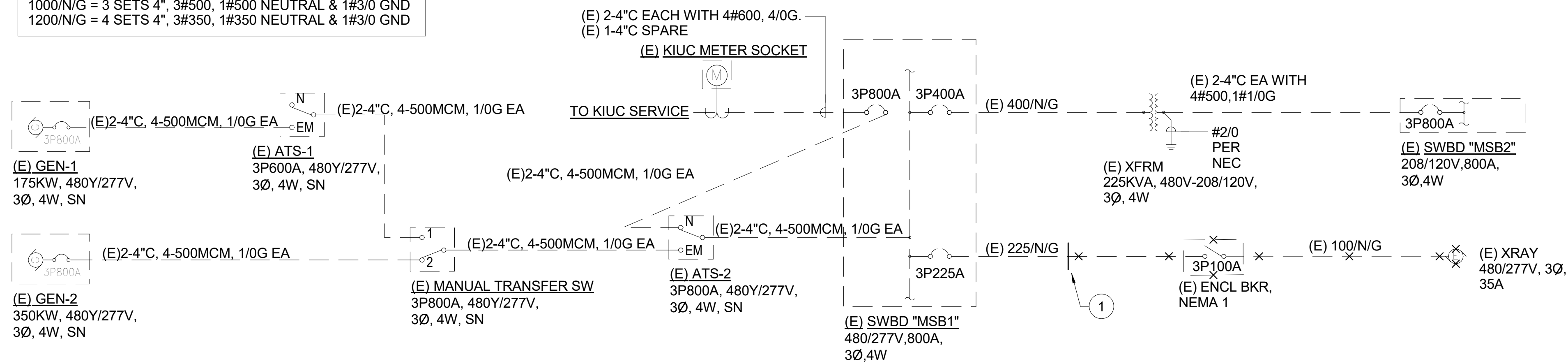
**HHSC KAUAI**  
**SMMH IMAGING DEPARTMENT RENOVATIONS**

FILENAME:  
C:\Users\ikama\Documents\SMMH-CT\_BLDG\_E18\_ikamaBPP2A.rvt

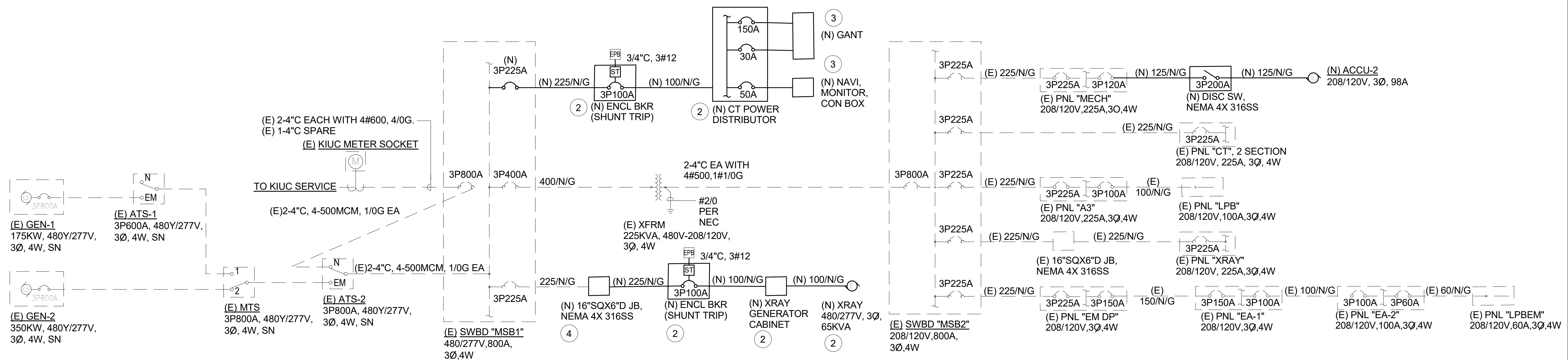
DRAWING TITLE  
**ONE-LINE DIAGRAM**

SCALE: NOT TO SCALE

DRAWN BY: ISE	CHECKED BY: RT
PROJECT NO. 220038-01	DRAWING NO. <b>E-301</b>
SHEET ISSUE DATE: 08/16/21	



**1 DEMOLITION ONE-LINE DIAGRAM**  
SCALE: NOT TO SCALE

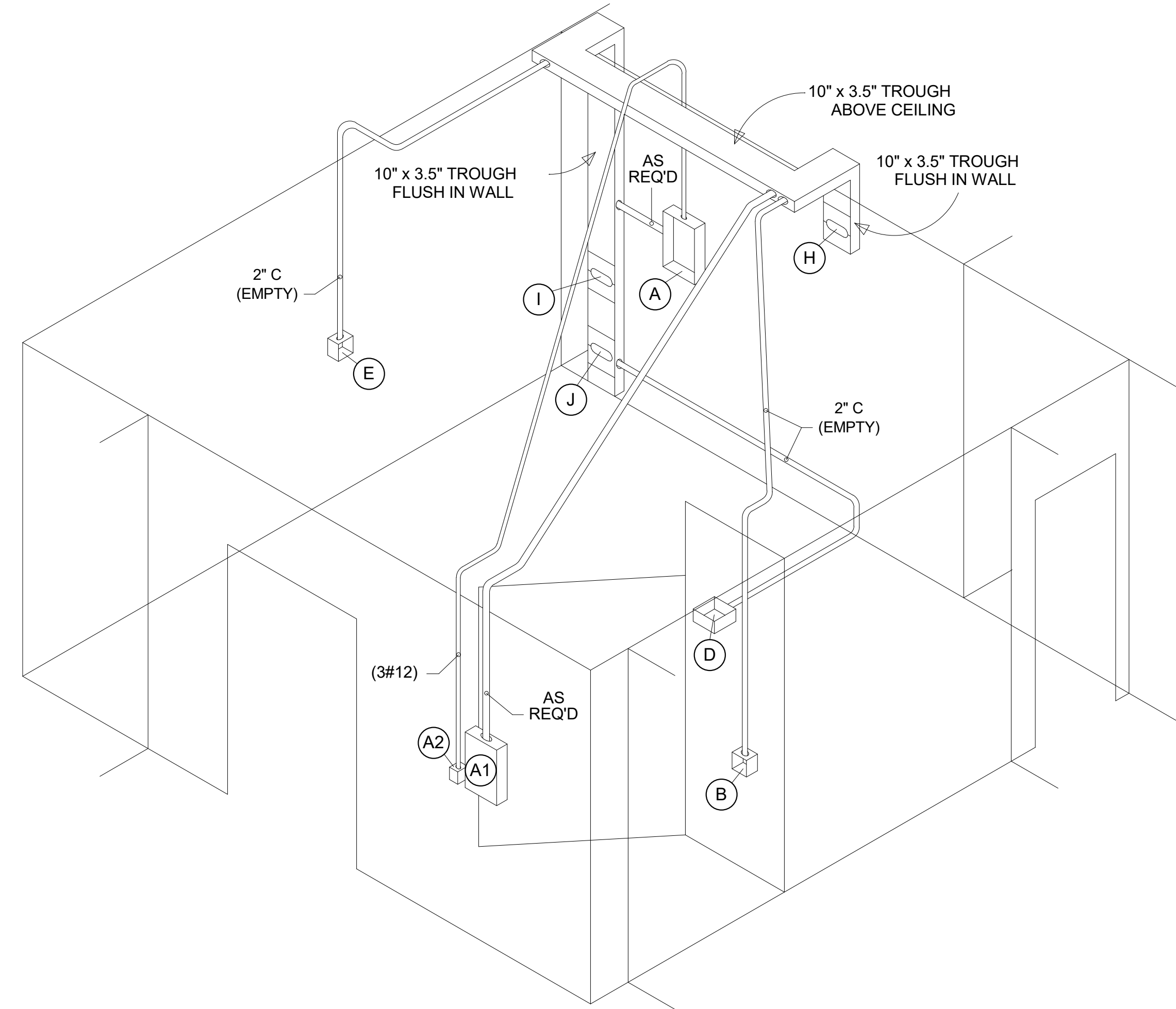


**2 ONE-LINE DIAGRAM**  
SCALE: NOT TO SCALE

REVISIONS	BY

This work was prepared by me or under my supervision and construction of this project will be under my observation.

**INSYNERGY ENGINEERING**  
 MECHANICAL • ELECTRICAL • FIRE PROTECTION  
 5544 Fort Worth Blvd, Suite 200, Houston, Texas 77036  
 Phone: (832) 521-3773 Fax: (832) 521-3993



X-RAY EQUIPMENT ELECTRICAL LEGEND							
ITEM	DESCRIPTION						
(A)	MAIN CIRCUIT BREAKER IN FLUSH MOUNTED NEMA ENCLOSURE WITH NEUTRAL AND GROUND ACCESSORIES. CONTRACTOR TO SUPPLY AND INSTALL HARD WIRES FROM CIRCUIT BREAKER TO LOCATION "J".						
(A1)	120/208-240 VAC SINGLE PHASE FLUSH MOUNTED LOAD CENTER WITH SINGLE MAIN BREAKER. LOAD CENTER TO CONTAIN BREAKERS WITH RATINGS AS FOLLOWS: <table border="1" style="margin-left: 20px;"> <thead> <tr> <th>BRANCH CIRCUIT</th> <th>BOX LOCATION</th> <th>120 VAC</th> </tr> </thead> <tbody> <tr> <td>PSI BOX</td> <td>"I"</td> <td>15 AMP</td> </tr> </tbody> </table> CONTRACTOR TO SUPPLY AND INSTALL HARD WIRES FROM CIRCUIT BREAKER IN LOAD CENTER TO BOX LOCATION "I" AND LABEL ACCORDINGLY. SEE SHEET E-404 FOR EXACT LOCATION.	BRANCH CIRCUIT	BOX LOCATION	120 VAC	PSI BOX	"I"	15 AMP
BRANCH CIRCUIT	BOX LOCATION	120 VAC					
PSI BOX	"I"	15 AMP					
(A2)	REMOTE SWITCH FOR OPERATION OF SHUNT TRIP FEATURE ON MAIN BREAKER "A". PROVIDE MUSHROOM TYPE "EMERGENCY OFF" RED BUTTON. SEE SHEET E-404 FOR EXACT LOCATION.						
(B)	6" X 6" X 4" DEEP JUNCTION BOX. SPLIT REMOVABLE COVER SHALL CONTAIN A 2" GROMMETED OPENING. SEE SHEET E-406 FOR EXACT LOCATION. LOCATE COVER 6" BELOW COUNTER TOP. PROVIDE GROMMETED OPENING IN COUNTER TOP FOR CABLE ACCESS TO EQUIPMENT.						
(D)	8" X 8" X 4" DEEP JUNCTION BOX. SPLIT REMOVABLE COVER SHALL CONTAIN A 2" GROMMETED OPENING. LOCATE COVER FLUSH IN FINISH FLOOR.						
(E)	6" X 6" X 4" DEEP JUNCTION BOX. SPLIT REMOVABLE COVER SHALL CONTAIN A 2" GROMMETED OPENING. LOCATE COVER 43" ABOVE FINISHED FLOOR.						
(H)	12" X TROUGH COVER WIDTH, SPLIT REMOVABLE COVER PLATE SHALL CONTAIN AN 8" X 3" GROMMETED OPENING. LOCATE COVER PLATE 90" ABOVE FINISHED FLOOR.						
(I)	12" X TROUGH COVER WIDTH, SPLIT REMOVABLE COVER PLATE SHALL CONTAIN AN 8" X 3" GROMMETED OPENING. LOCATE COVER PLATE 30" ABOVE FINISHED FLOOR.						
(J)	12" X TROUGH COVER WIDTH, SPLIT REMOVABLE COVER PLATE SHALL CONTAIN AN 8" X 3" GROMMETED OPENING. LOCATE COVER PLATE 6" ABOVE FINISHED FLOOR. PROVIDE 4" SEALTITE (OR APPROVED EQUAL) WITH 90 DEGREE CONNECTORS AT EACH END. CONNECT TO "J" AND LEAVE 6' WIRE TAILS TO EQUIPMENT.						

- NOTES:**
- CONNECTION DIAGRAM PROVIDED BY EQUIPMENT VENDOR FOR SCHEMATIC PURPOSES ONLY. CONTRACTOR TO CONFIRM WITH EQUIPMENT VENDOR ON EQUIPMENT AND EQUIPMENT LOCATIONS PRIOR TO CONDUCTING WORK.

**1 X-RAY ROOM CONNECTION DIAGRAM**  
 NOT TO SCALE

Designed	Designer
Drawn	Author
Checked	Checker
Date	09/15/21
Job No.	220038-01
Drawing Number	<b>E-403</b>
Sheet No.	of