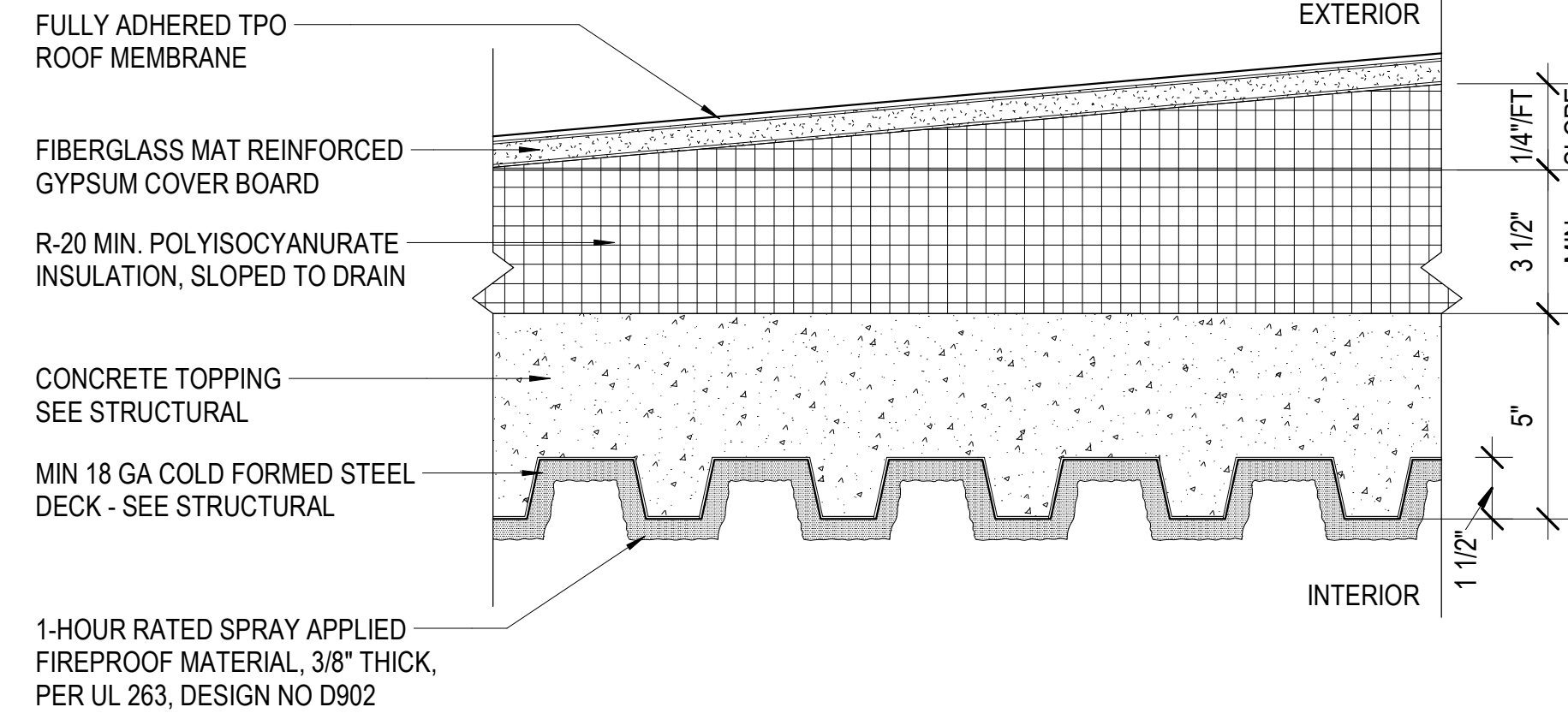


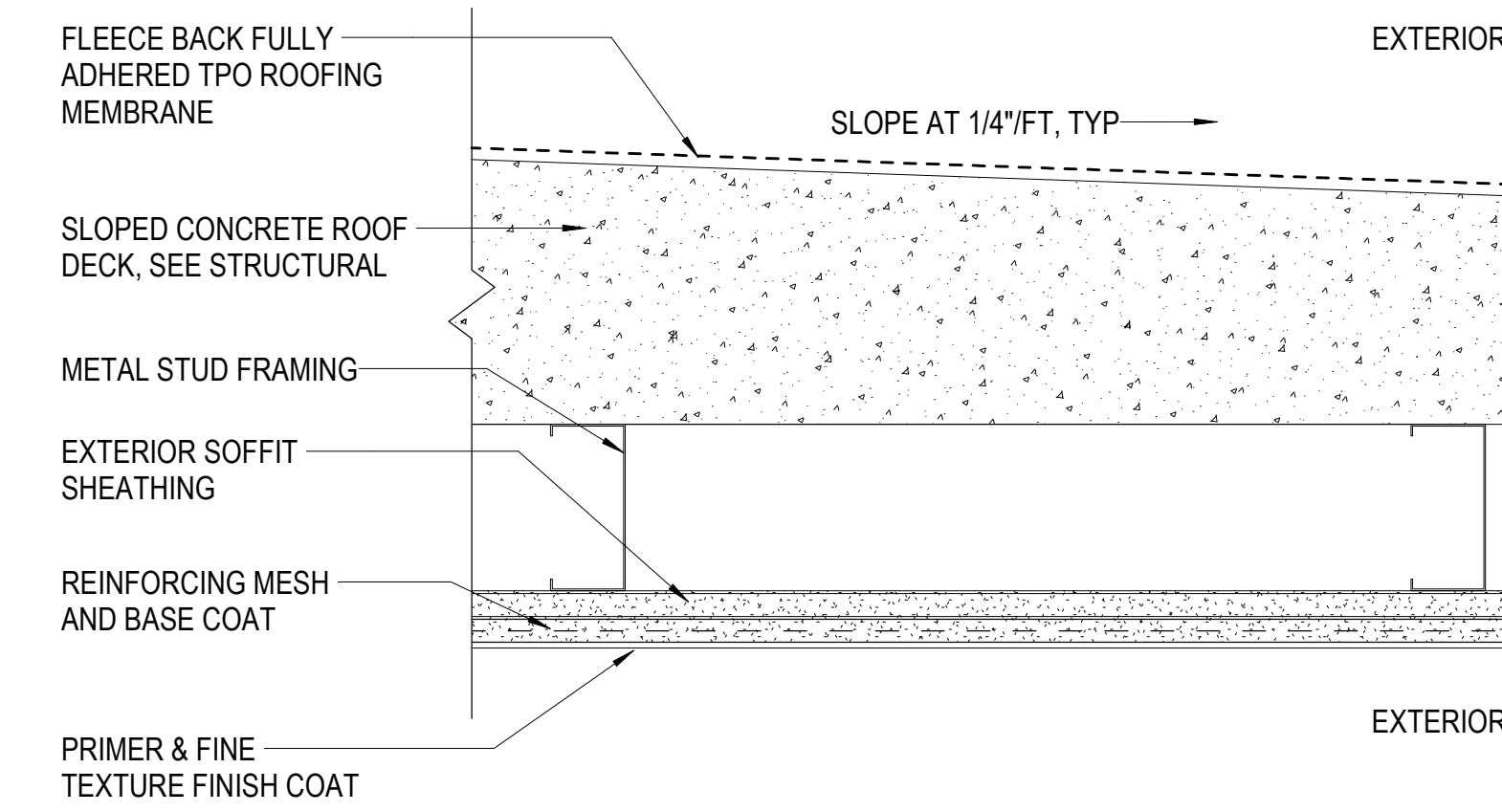
RA-01

BASIS OF DESIGN: PAC-CLAD SNAP-CLAD
SLATE GRAY FINISH
ESR-4173



RA-02

BASIS OF DESIGN: TPO
FINISH: WHITE



RA-03

TYPICAL CANOPY ROOF



111 S. KING STREET, SUITE 170
HONOLULU, HAWAII 96813
808.523.5866
WWW.G70.DESIGN

| # | Date | Description |
|---|------|-------------|
|---|------|-------------|

CONSTRUCTION DOCUMENTS

2/27/2026

This work was prepared by me or under my supervision and construction of this project will be under my observation

Supervision and Observation of this project is as defined in Section 1.2 of the Hawaii Administrative Rules, Title 16, Chapter 115. Professional Engineers, Architects, Land Surveyors, and Landscape Architects.

License Expiration Date

PROJECT TITLE

SAMUEL MAHELONA MEMORIAL HOSPITAL

EMERGENCY DEPARTMENT RENOVATION & ADDITION

TMK#: 4-6-014:113

FILENAME:
Autodesk Docs://225057-01 SMMH ED/SMMH-BLDG_A24.rvt

DRAWING TITLE
EXTERIOR ASSEMBLIES

SCALE: 3" = 1'-0"

| | |
|----------------------------|-------------------------------|
| DRAWN BY: Author | CHECKED BY: Checker |
|----------------------------|-------------------------------|

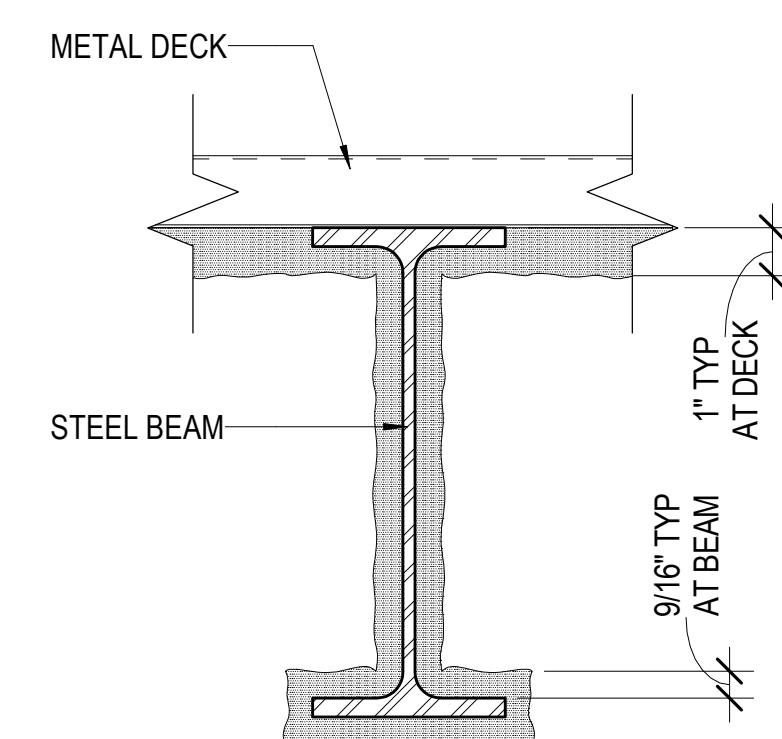
| | |
|--------------------------|-------------|
| PROJECT NO. 225057-01 | DRAWING NO. |
|--------------------------|-------------|

SHEET ISSUE DATE:
2/27/26

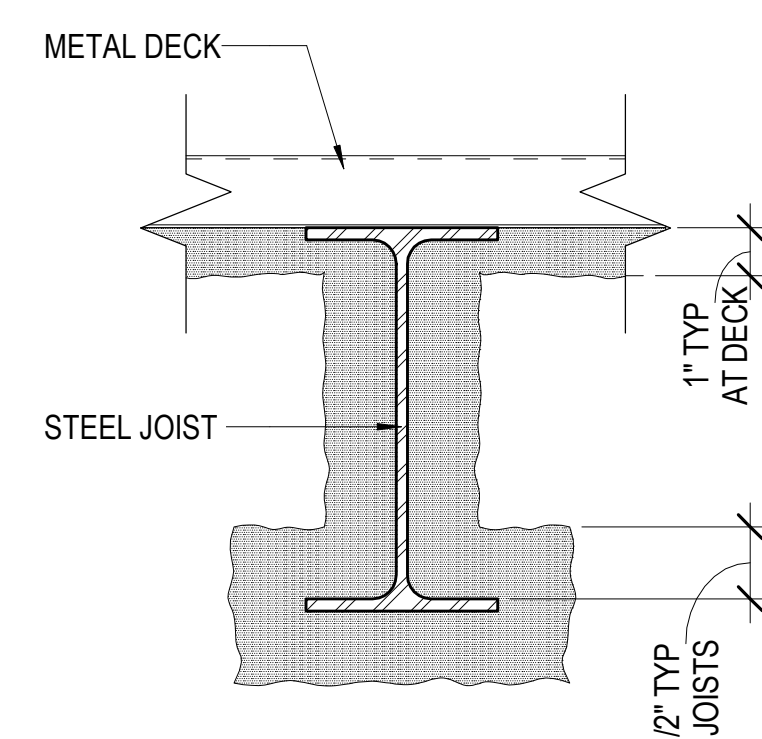
A-411

FIRE RATED ASSEMBLIES

AT PITCHED ROOF

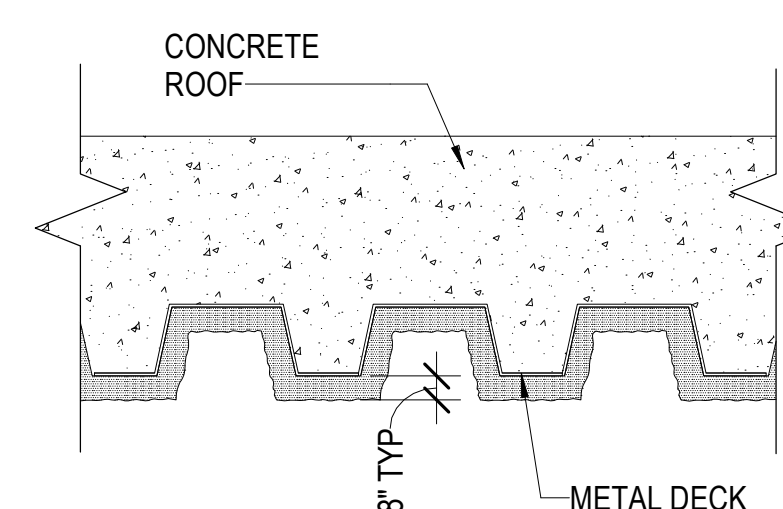


STEEL BEAM
BASIS OF DESIGN: UL 263, P801



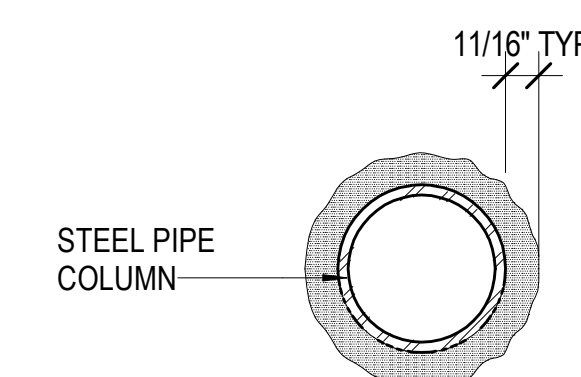
STEEL JOISTS
BASIS OF DESIGN: UL 263, P801

AT FLAT ROOF

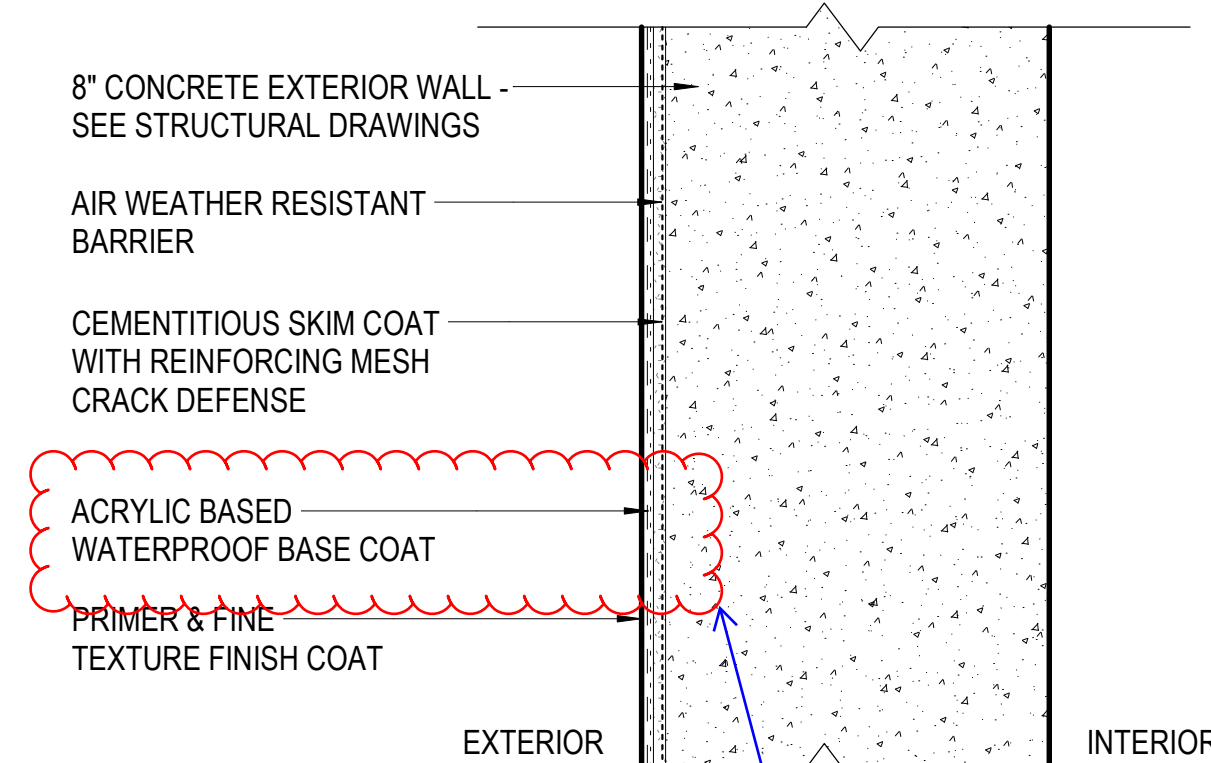


STEEL DECK WITH CONCRETE TOPPING
BASIS OF DESIGN: UL 263, P902

AT STEEL POSTS



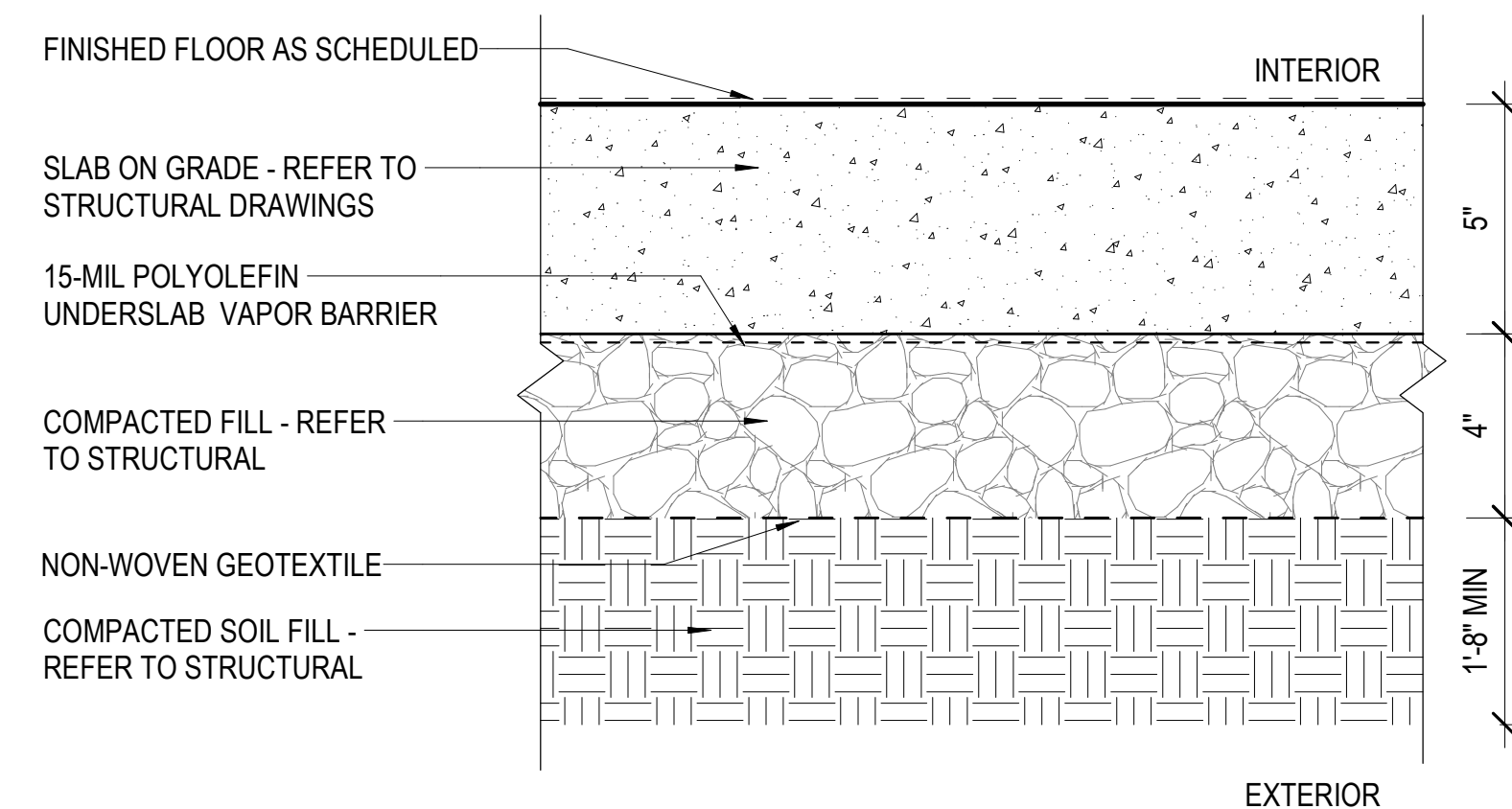
STEEL POSTS
BASIS OF DESIGN: UL 263, X790



DOES THIS APPLY TO THE PLANTER WALL?

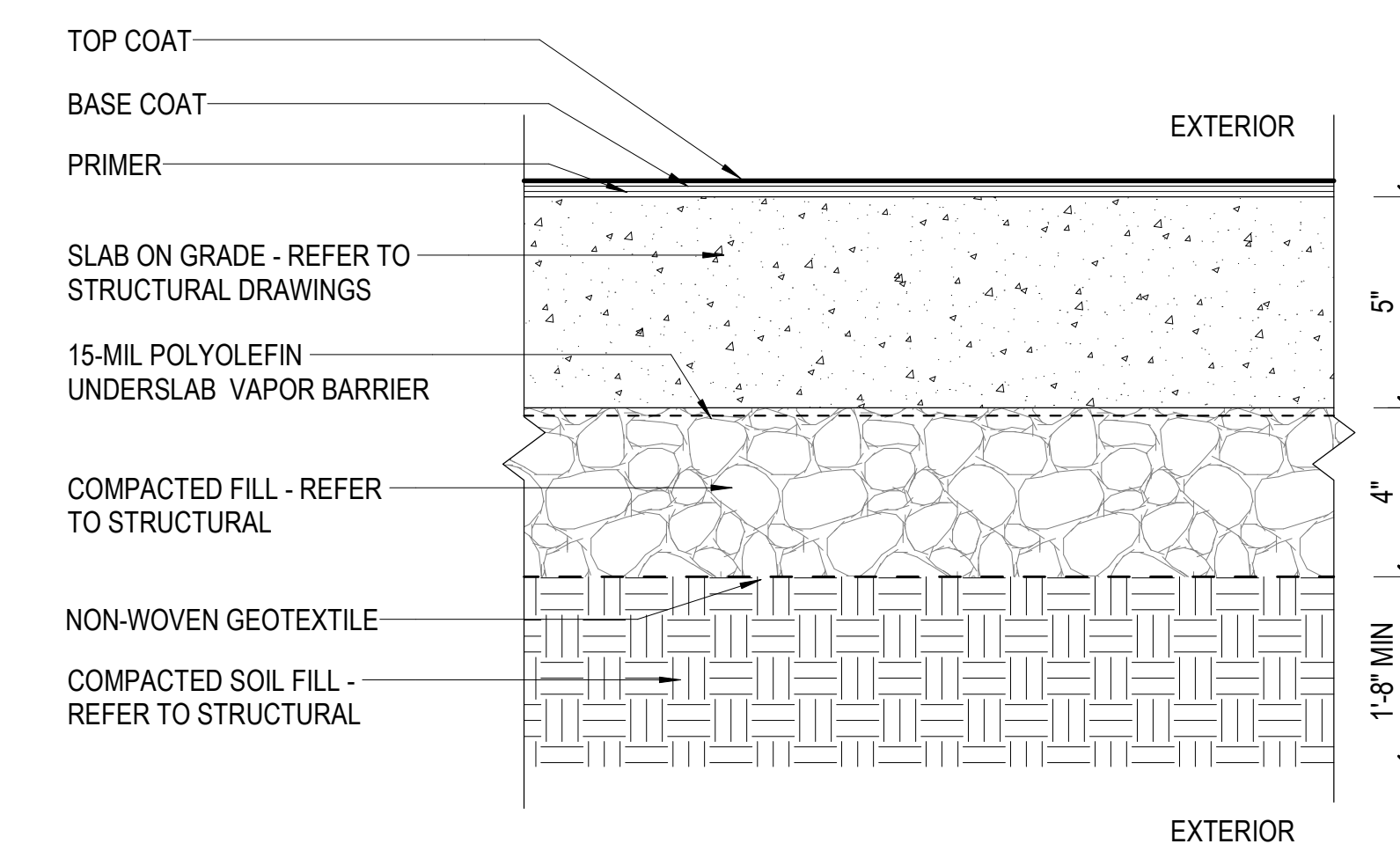
EX-01

BASIS OF DESIGN: STOQUIK FINISH FOR CONCRETE
STOLIT X FINE
COLOR TBD



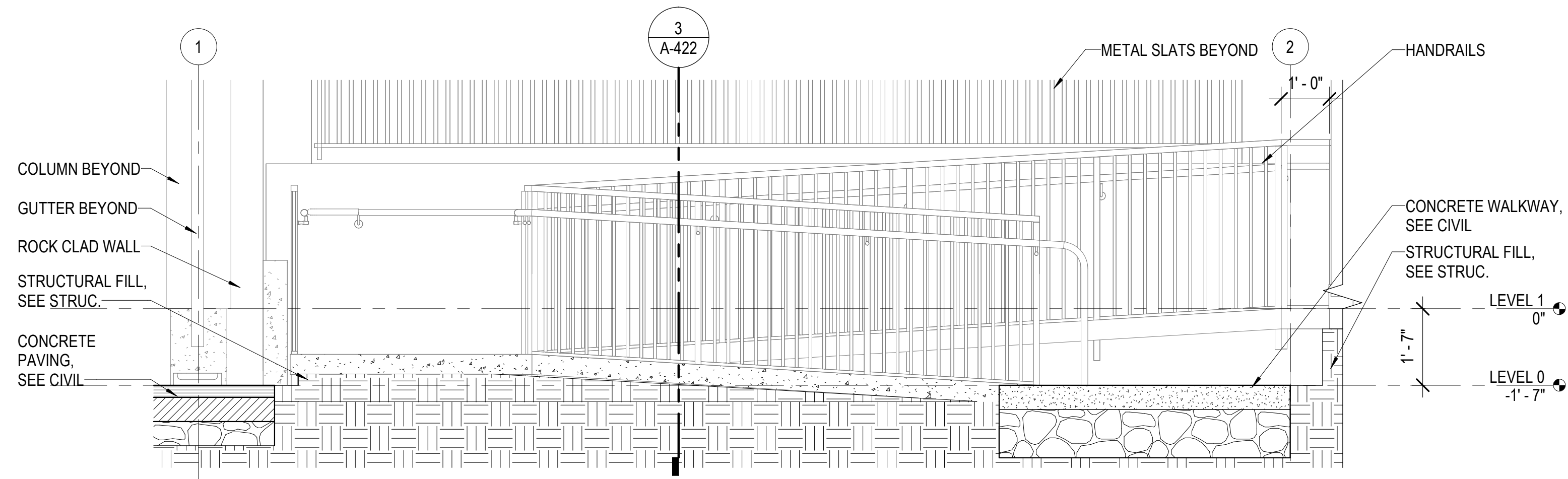
SA-01

TYPICAL FLOOR SLAB ASSEMBLY



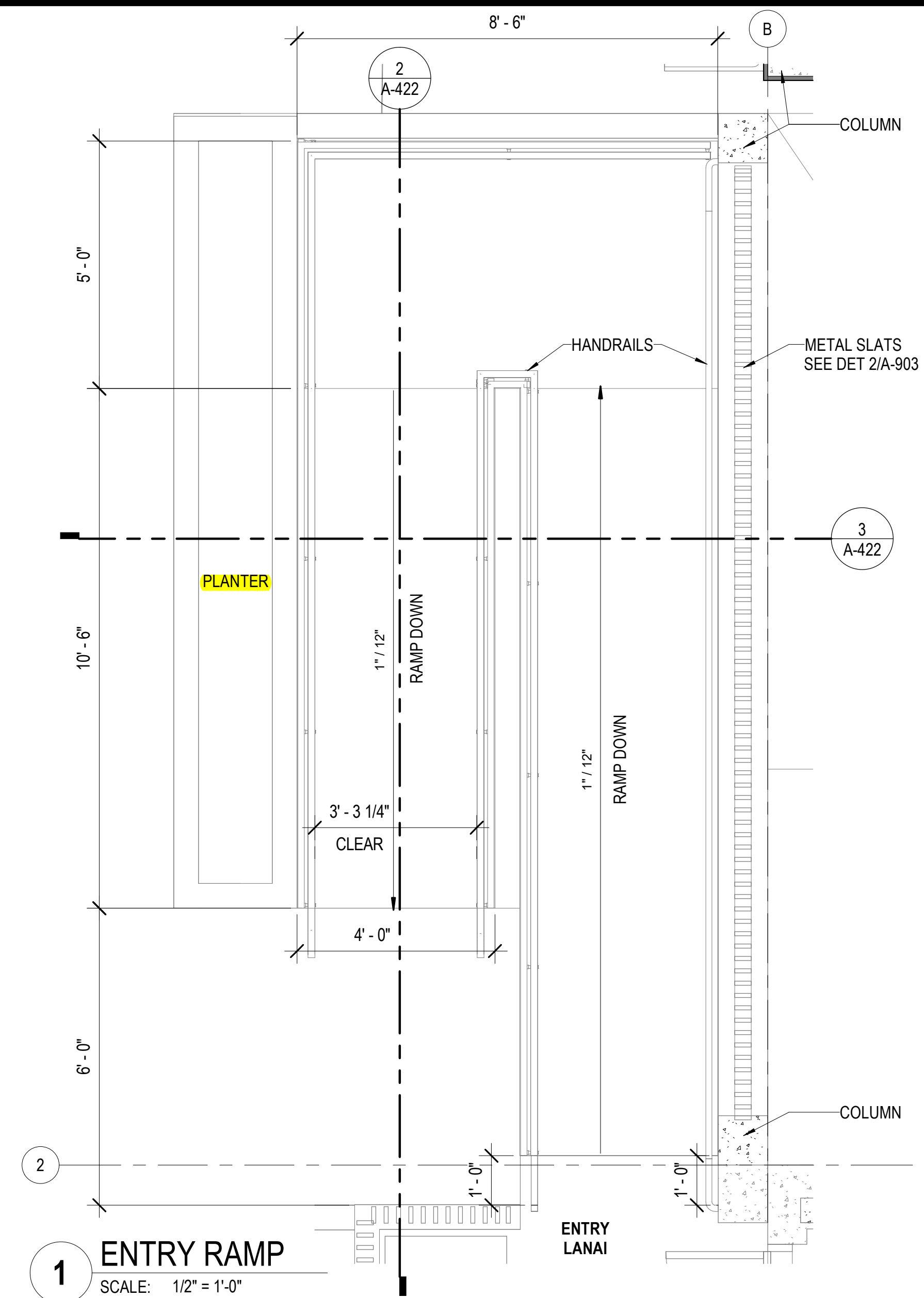
SA-02

TYPICAL EXTERIOR FLOOR SLAB ASSEMBLY
BASIS OF DESIGN: NEOGARD PEDAGARD FC
COLOR TBD



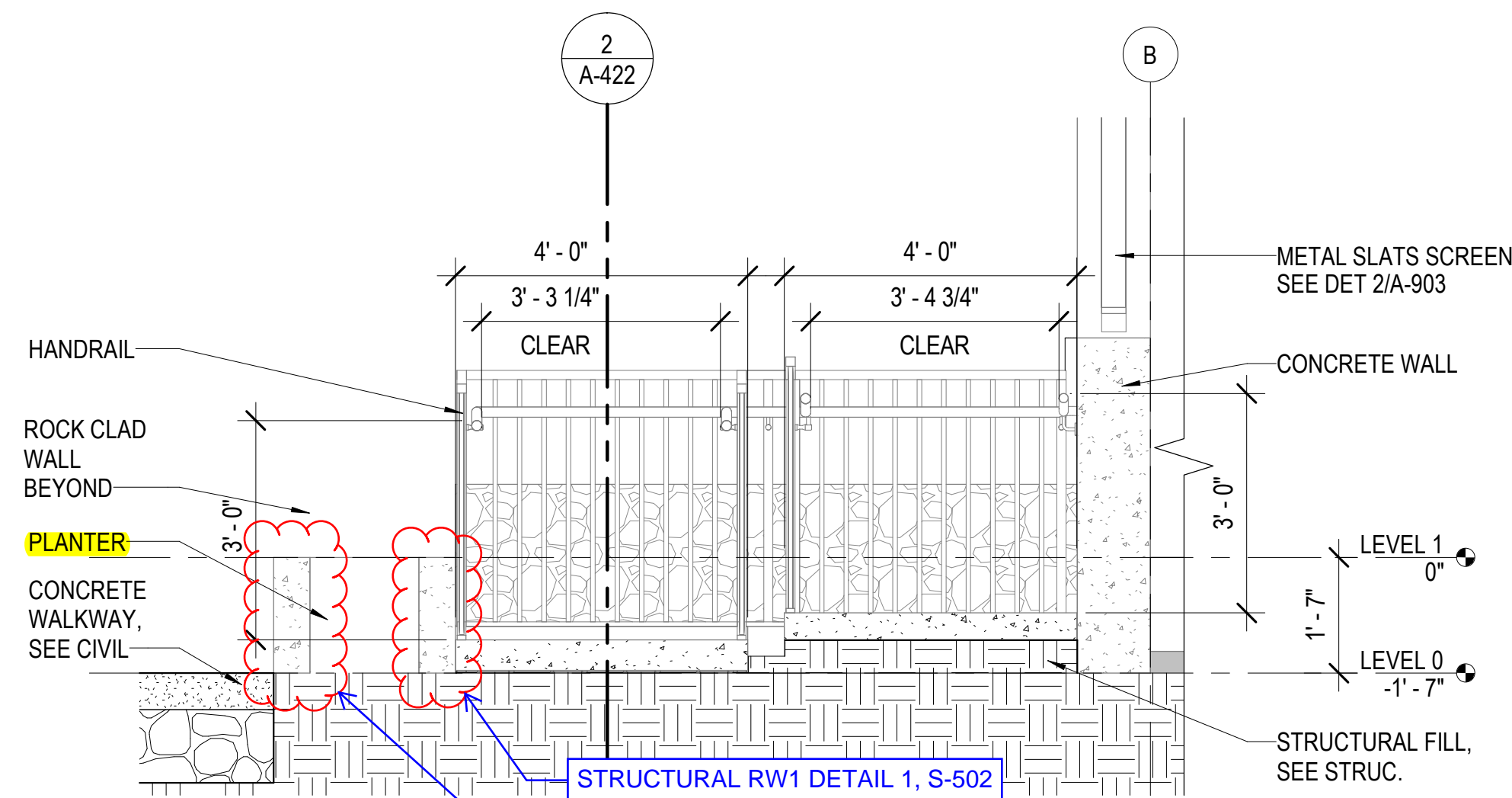
2 ENTRY RAMP LONGITUDINAL SECTION

SCALE: 1/2" = 1'-0"



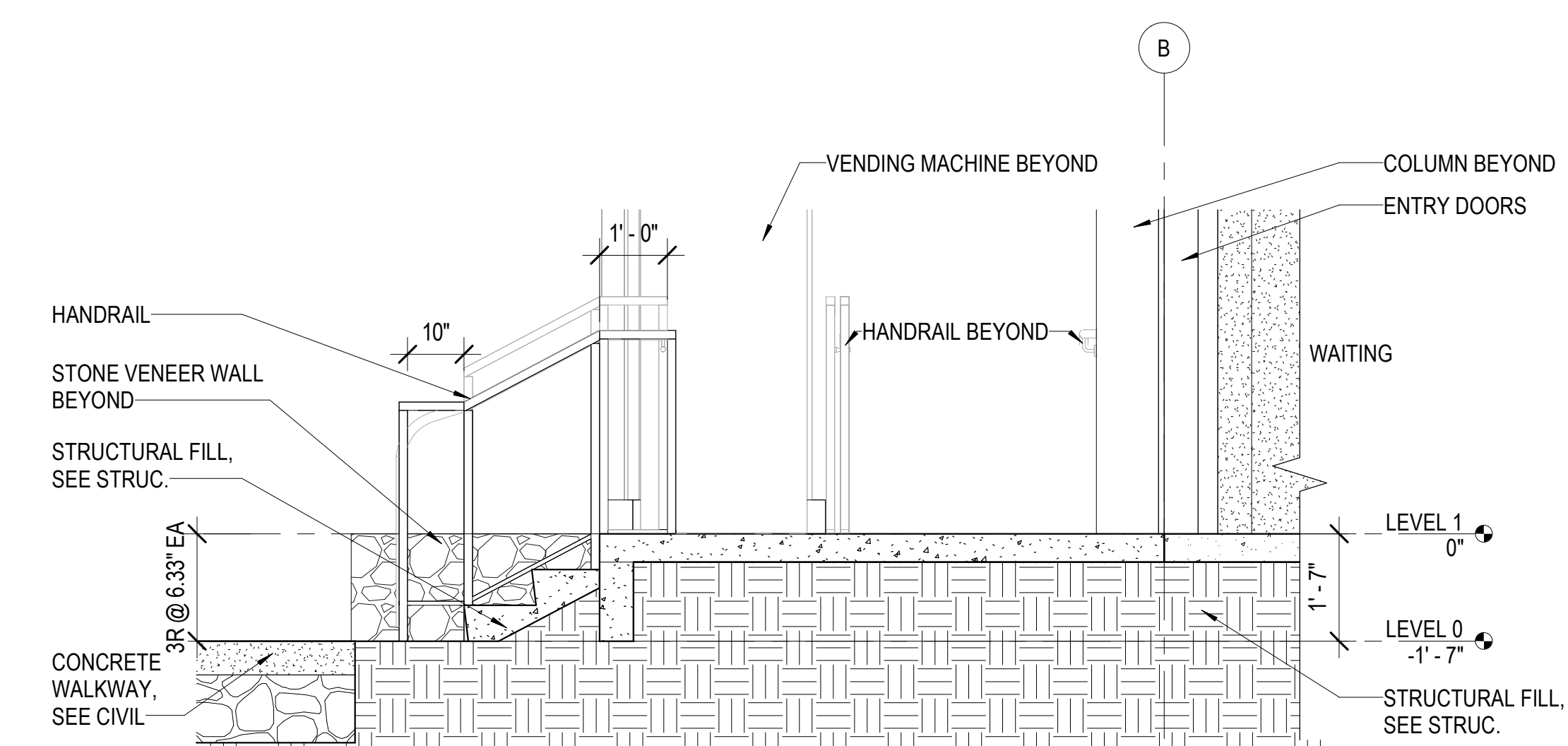
1 ENTRY RAMP

SCALE: 1/2" = 1'-0"



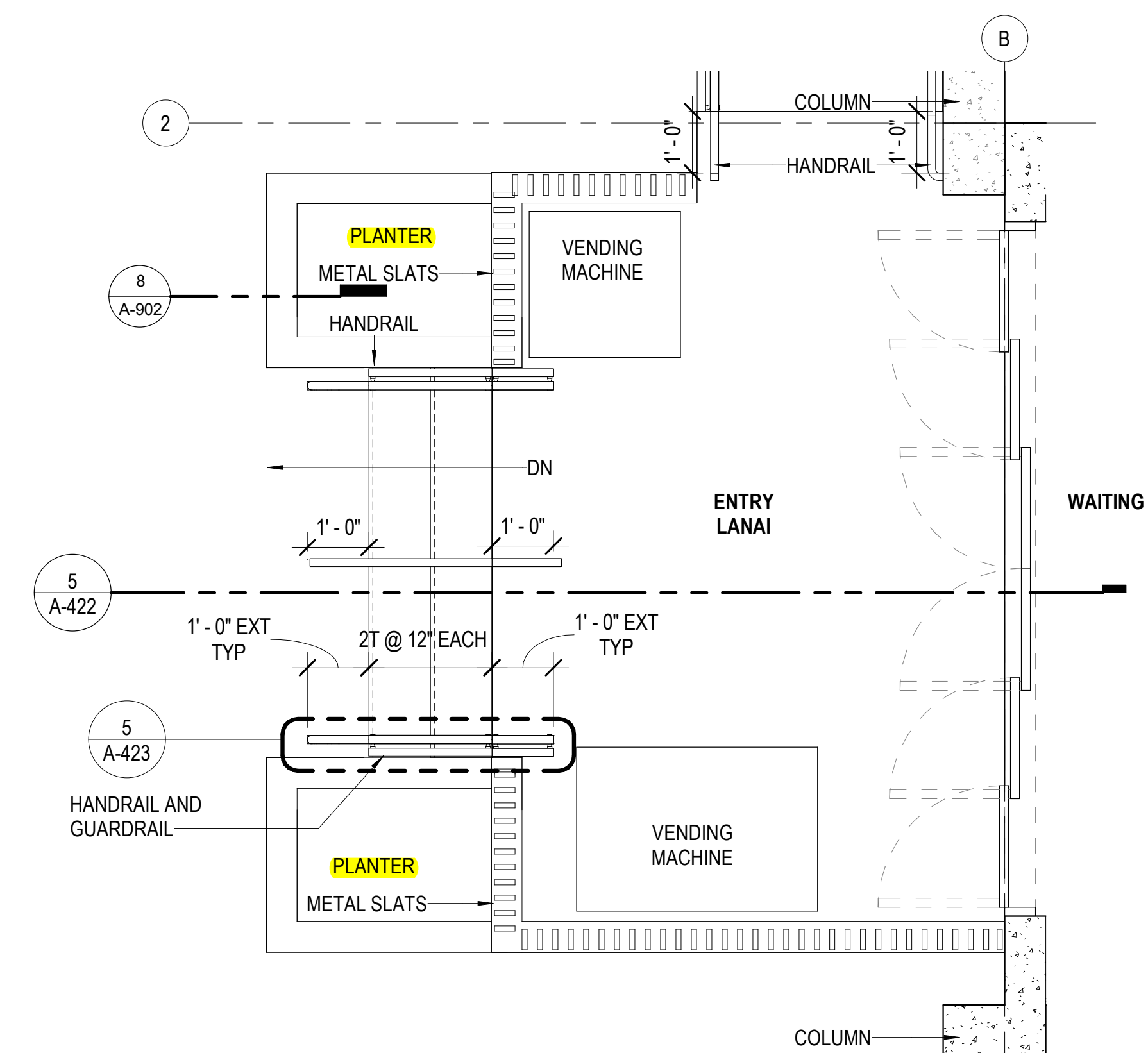
3 ENTRY RAMP SECTION

SCALE: 1/2" = 1'-0"



5 ENTRY STAIRS SECTION

SCALE: 1/2" = 1'-0"



4 ENTRY STAIRS

SCALE: 1/2" = 1'-0"



111 S. KING STREET, SUITE 170
HONOLULU, HAWAII 96813
808.523.5866
WWW.G70.DESIGN

| # | Date | Description |
|---|------|-------------|
| | | |

CONSTRUCTION DOCUMENTS

2/27/2026

This work was prepared by me or under my supervision and construction of this project will be under my observation

Supervision and Observation of this project is as defined in Section 1.2 of the Hawaii Administrative Rules, Title 16, Chapter 115, Professional Engineers, Architects, Land Surveyors, and Landscape Architects.

License Expiration Date

PROJECT TITLE

SAMUEL MAHELONA MEMORIAL HOSPITAL

EMERGENCY DEPARTMENT RENOVATION & ADDITION

TMK#: 4-6-014:113

FILENAME:
Autodesk Docs://225057-01 SMMH ED/SMMH-BLDG_A24.rvt

DRAWING TITLE
VERTICAL CIRCULATION

SCALE: 1/2" = 1'-0"

DRAWN BY:
Author

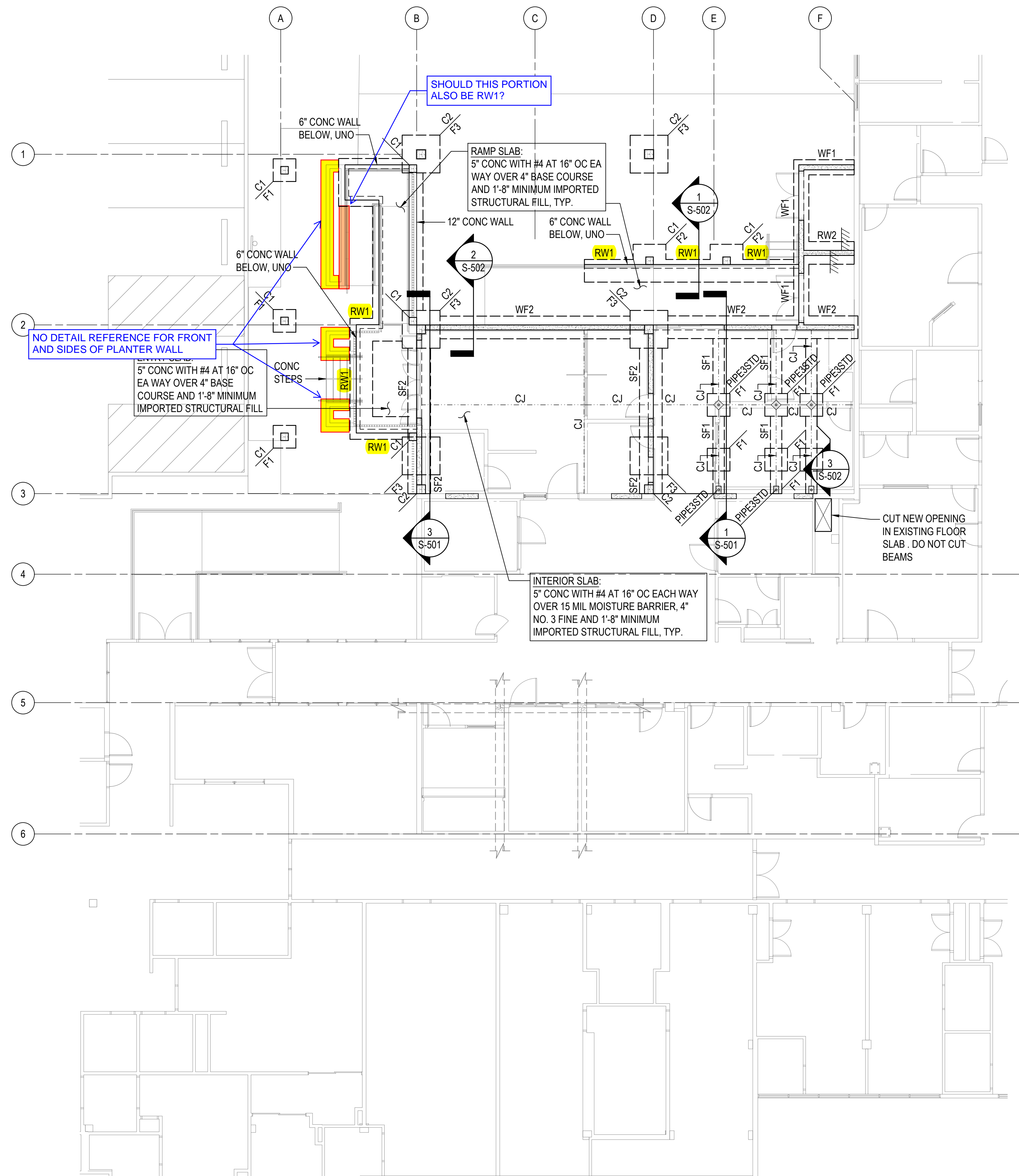
CHECKED BY:
Checker

PROJECT NO.
225057-01

DRAWING NO.

SHEET ISSUE DATE:
2/27/26

A-422



MECHANICAL EQUIPMENT CONC PAD AT LOWER LEVEL. SEE ARCH AND MECH DRAWINGS FOR LOCATION AND EXTENTS. SEE XX/S-XXX

1 FOUNDATION PLAN
SCALE: 1/8" = 1'-0"

COLUMN SCHEDULE

| MARK | SIZE | REINFORCING | |
|------|--------------|-------------|-------------|
| | | LONG | TIES |
| C1 | 12"x12" CONC | (8) #5 | #3 AT 6" OC |
| C2 | 14"x14" CONC | (8) #8 | #4 AT 6" OC |

FOUNDATION SCHEDULE

| MARK | SIZE | | | REINFORCING |
|------|-------|-------|-------|----------------------------------------------|
| | L | W | T | |
| F1 | 3'-0" | 3'-0" | 1'-3" | (3) #5 BOTTOM, EA WAY TOP & BOT |
| F2 | 4'-4" | 3'-0" | 1'-3" | (4) #5 LONG, (5) #5 TRANS, BOTTOM |
| F3 | 5'-0" | 5'-0" | 1'-3" | (6) #5 EA WAY, TOP AND BOTTOM |
| F4 | | | | |
| WF1 | - | 2'-0" | 1'-3" | (3) #5 CONT, #5 AT 12" OC TRANS, BOTTOM |
| WF2 | - | 3'-0" | 1'-3" | (4) #5 CONT, #5 AT 12" OC TRANS, BOTTOM |
| RW1 | - | 2'-6" | 1'-0" | SEE DETAIL 1/S-502 |
| RW2 | - | 3'-0" | 1'-3" | (4) #5 CONT, #5 AT 12" OC TRANS, TOP & BOT |
| SF1 | - | 1'-6" | 1'-3" | (3) #6 CONT, TOP & BOT WITH #4 TIES AT 8" OC |
| SF2 | - | 3'-0" | 1'-6" | (5) #6 CONT, TOP & BOT WITH #4 TIES AT 8" OC |

COFFMAN ENGINEERS
745 Fort Street, Suite 400
Honolulu, HI 96813
ph 808.687.8884
www.coffman.com

REVISIONS

| # | Date | Description |
|---|------|-------------|
| | | |

CONSTRUCTION DOCUMENTS
02/27/202

This work was prepared by me or under my supervision and construction of this project will be under my observation

Supervision and Observation of this project is as defined in Section 1.2 of the Hawaii Administrative Rules, Title 16, Chapter 115, Professional Engineers, Architects, Land Surveyors, and Landscape Architects.

APRIL 30, 2026
License Expiration Date

PROJECT TITLE

SAMUEL MAHELONA MEMORIAL HOSPITAL

EMERGENCY DEPARTMENT RENOVATION & ADDITION

TMK#: 4-6-014:113

FILENAME:
253149_S-101.dwg

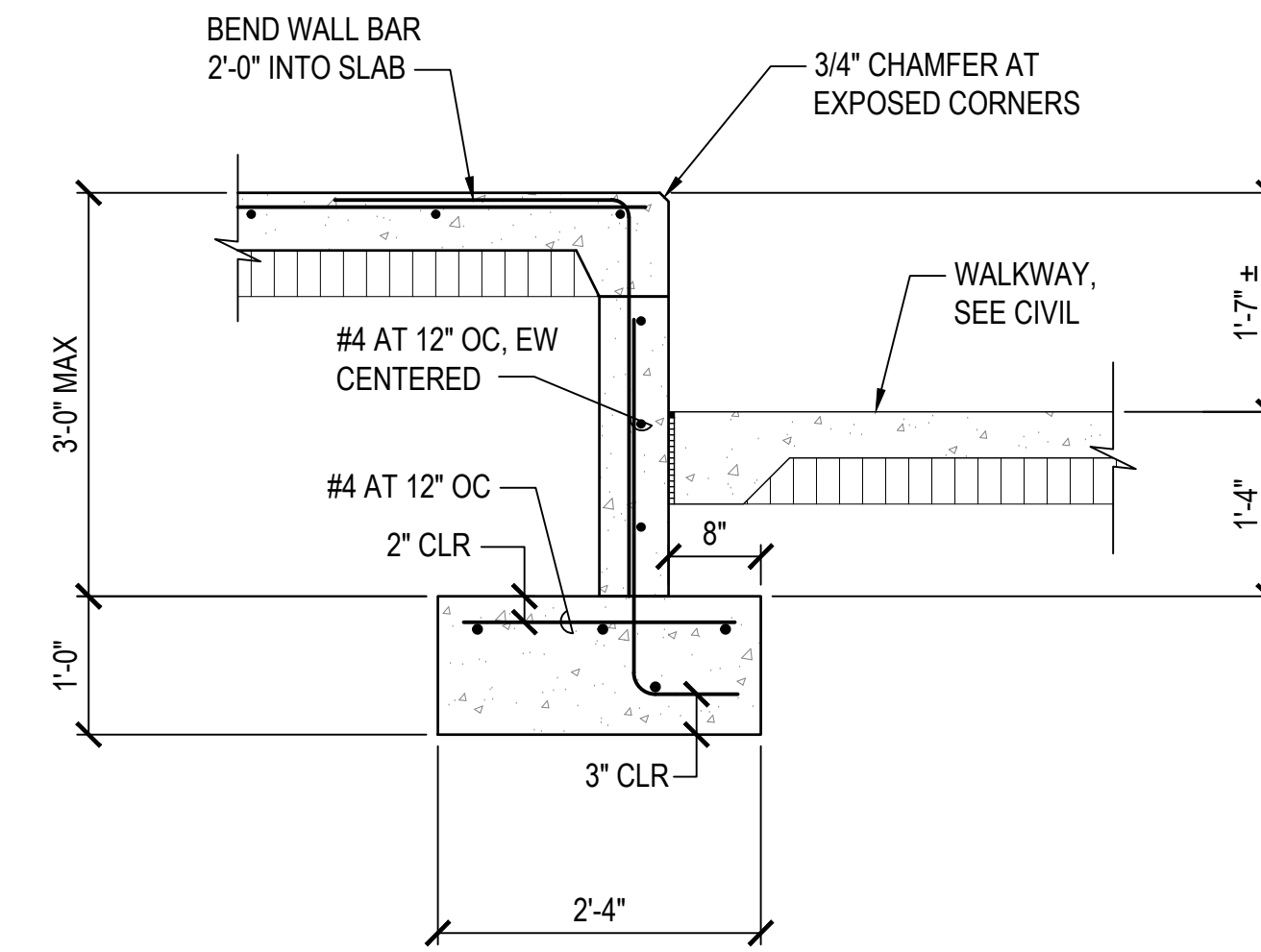
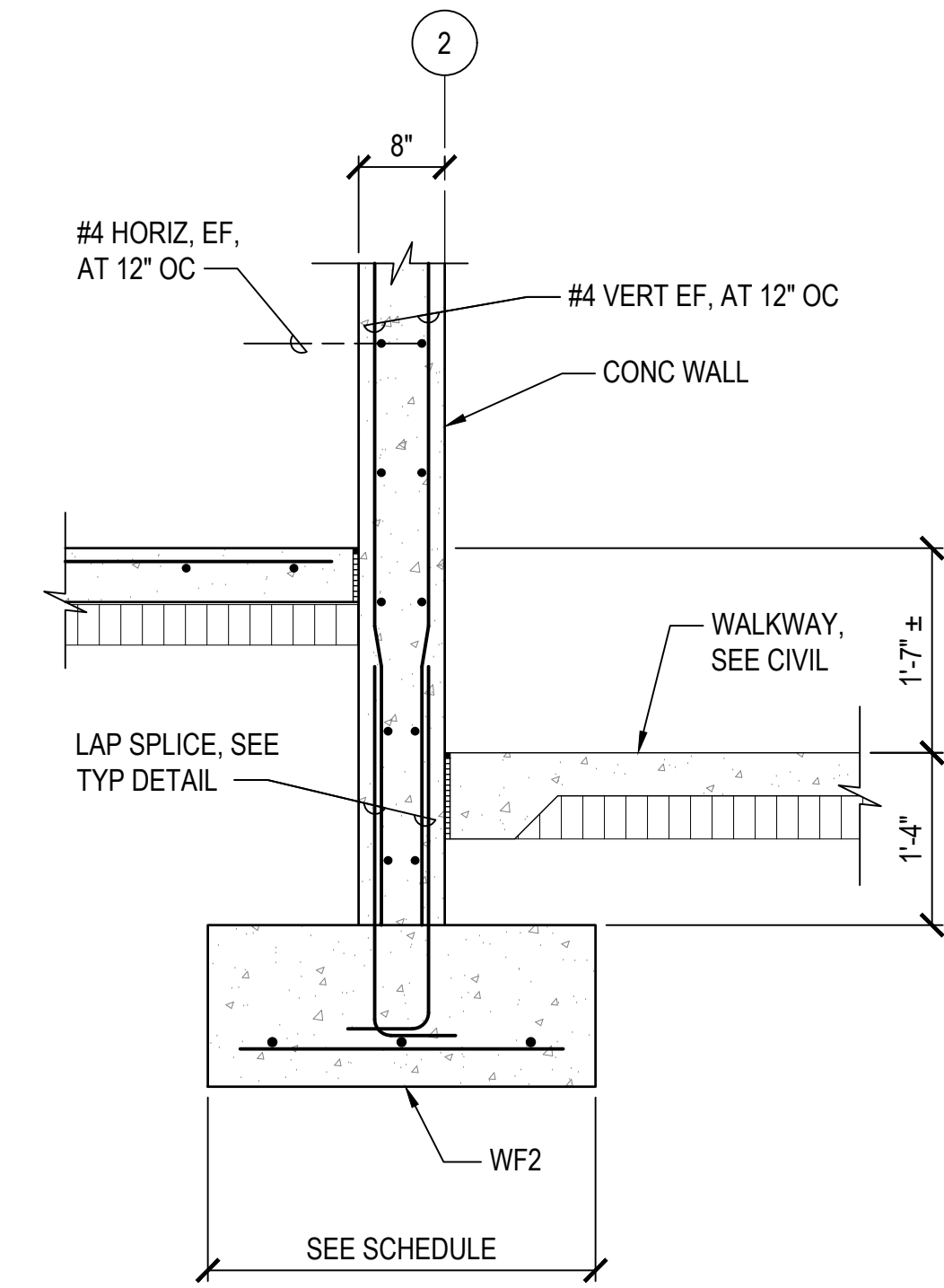
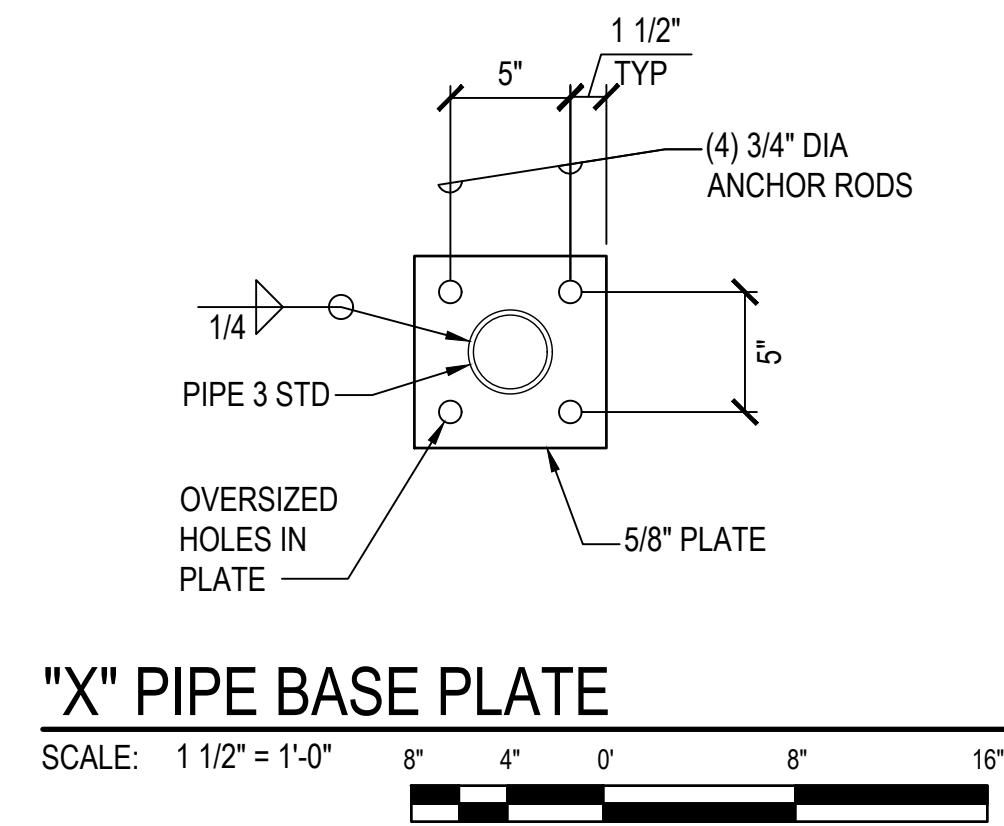
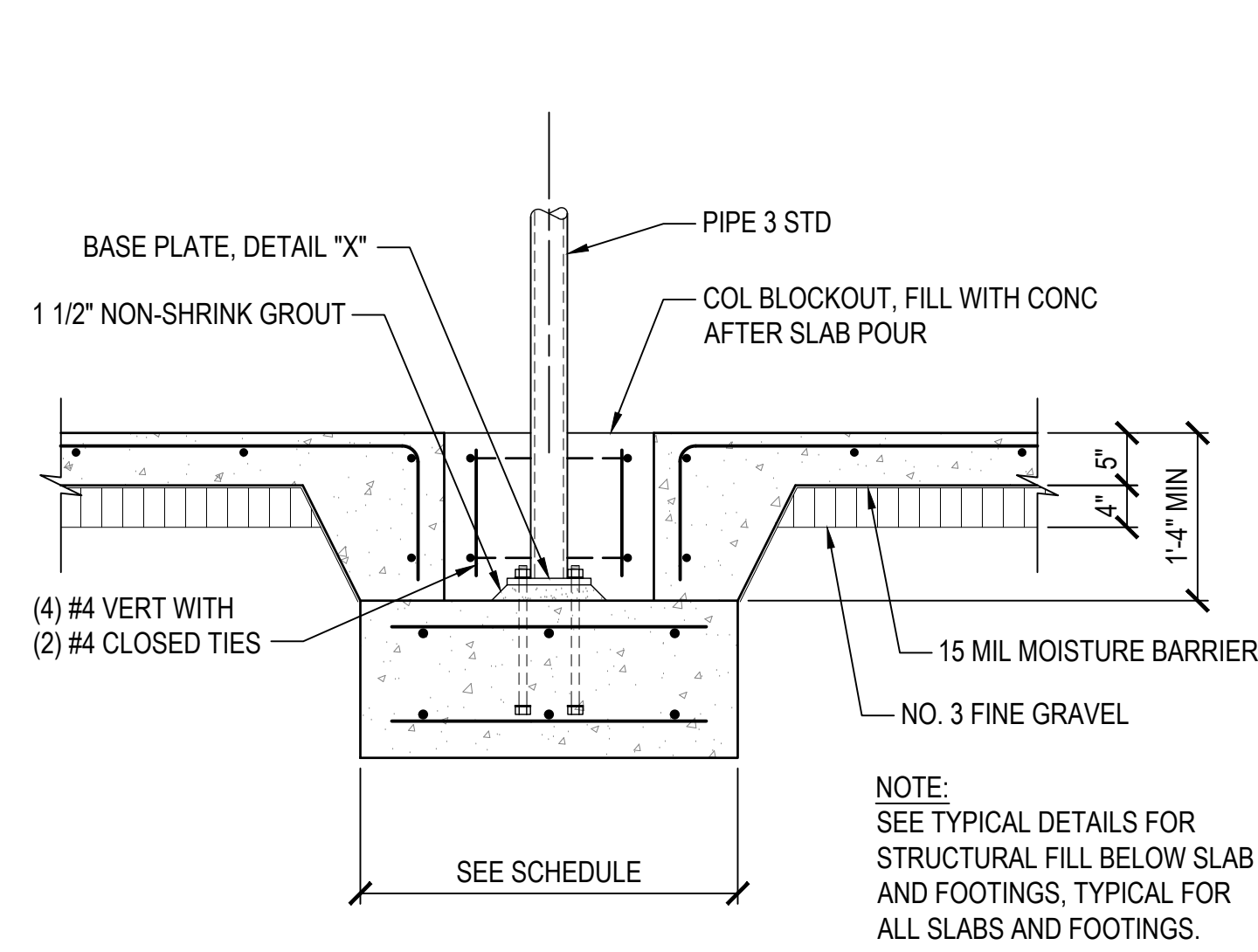
DRAWING TITLE

FOUNDATION PLAN

SCALE:

| | |
|-------------------------------|-----------------------------|
| DRAWN BY: DH | CHECKED BY: MWM |
| PROJECT NO. 225057-01 | DRAWING NO. S-101 |
| SHEET ISSUE DATE: 12/23/25 | |

I:\coffman.com\projects\Hon\25\jobs\253149_SMMH_ED0.0_DWG\SS\253149_S-101.dwg 3/6/2026 5:26:26 PM



3 SECTION
SCALE: 3/4" = 1'-0"
16" 8" 0" 16" 32"

2 SECTION
SCALE: 3/4" = 1'-0"
16" 8" 0" 16" 32"

1 RETAINING WALL RW1
SCALE: 3/4" = 1'-0"
16" 8" 0" 16" 32"

NOTE:
SEE TYPICAL DETAILS FOR
STRUCTURAL FILL BELOW SLAB
AND FOOTINGS, TYPICAL FOR
ALL SLABS AND FOOTINGS.

COFFMAN ENGINEERS
745 Fort Street, Suite 400
Honolulu, HI 96813
ph 808.687.8884
www.coffman.com

REVISIONS
Date Description

CONSTRUCTION DOCUMENTS
02/27/202

This work was prepared by me or under my supervision and construction of this project will be under my observation

Supervision and Observation of this project is as defined in Section 1.2 of the Hawaii Administrative Rules, Title 16, Chapter 115, Professional Engineers, Architects, Land Surveyors, and Landscape Architects.

APRIL 30, 2026
License Expiration Date

PROJECT TITLE

SAMUEL MAHELONA MEMORIAL HOSPITAL
EMERGENCY DEPARTMENT RENOVATION & ADDITION
TMK#: 4-6-014:113

FILENAME:
253149_S-502.dwg

DRAWING TITLE
SECTIONS

SCALE:

DRAWN BY:
DH

CHECKED BY:
MWM

PROJECT NO.
225057-01

DRAWING NO.

SHEET ISSUE DATE:
12/23/25

S-502